

(FFU9.FFU) 24025

FAIRFIELD NINE DEPARTURE

AL-365 (FAA)

SALT LAKE CITY INTL (SLC)
SALT LAKE CITY, UTAH

D-ATIS
124.75 125.625
CLNC DEL
127.3 379.975
CPDLC
SALT LAKE CITY DEP CON
128.6 322.3

TAKEOFF MINIMUMS

Rwys 14, 32, 34L/R, 35: NA- ATC.
Rwys 16L/R, 17: Assigned heading 160°, standard with minimum climb of 260' per NM to 6000; assigned heading 280° CW 340°, standard with minimum climb of 400' per NM to 8300.

NOTE: DME required.
NOTE: RADAR required.
NOTE: This is a RADAR vector departure to assigned route or fix.

**TOP ALTITUDE:
10000**

WASATCH
116.8 TCH
Chan 115

FAIRFIELD
116.6 FFU
Chan 113

DELTA
116.1 DTA
Chan 108

MILFORD
112.1 MLF
Chan 58

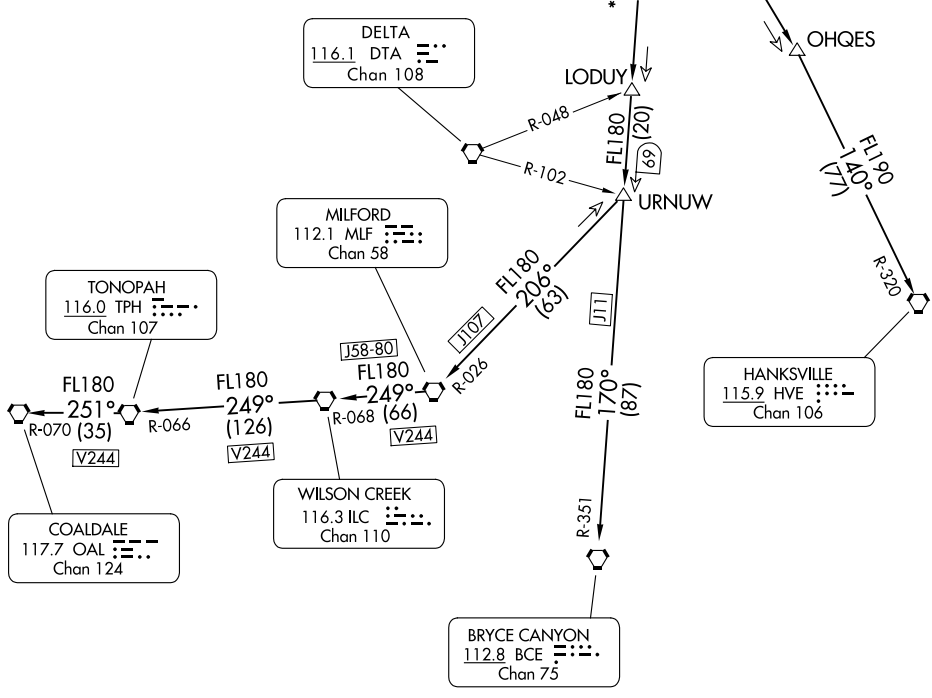
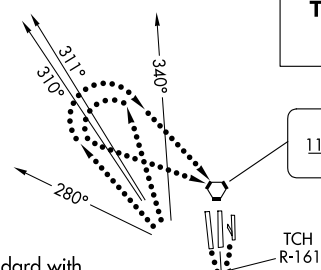
TONOPAH
116.0 TPH
Chan 107

HANKSVILLE
115.9 HVE
Chan 106

COALDALE
117.7 OAL
Chan 124

WILSON CREEK
116.3 ILC
Chan 110

BRYCE CANYON
112.8 BCE
Chan 75



SW-4, 11 JUN 2026 to 09 JUL 2026

SW-4, 11 JUN 2026 to 09 JUL 2026

(CONTINUED ON FOLLOWING PAGE)

NOTE: Chart not to scale.

FAIRFIELD NINE DEPARTURE

(FFU9.FFU) 17AUG17

SALT LAKE CITY, UTAH
SALT LAKE CITY INTL (SLC)



DEPARTURE ROUTE DESCRIPTION

TAKEOFF RUNWAYS 16L/R, 17: Climb on heading 160° or as assigned, maintain 10000 or assigned lower altitude. Thence
. . . . expect RADAR vectors to FFU VORTAC then on filed/assigned transition.
Expect clearance to filed altitude 10 minutes after departure.

LOST COMMUNICATIONS: If not in contact with departure control 1 minute after takeoff:

RUNWAYS 16L and 17: Assigned heading 160°, turn right, thence

RUNWAY 16R: Assigned heading 160°, turn left, thence

. . . . climb to 11000 via TCH R-161 to FFU VORTAC and continue climb via assigned/filed transition.

RUNWAYS 16L/R, 17: Assigned heading 280° CW 340°, fly assigned heading to 11000. Then, aircraft heading 280° CW 310°, execute a climbing right turn, thence

. . . . aircraft heading 311° CW 340°, execute a climbing left turn, thence

. . . . direct TCH VORTAC, TCH R-161 to FFU VORTAC, and continue climb via assigned/filed transition.

BRYCE CANYON TRANSITION (FFU9.BCE): From over FFU VORTAC on FFU R-170 to URNUW, then on FFU R-170 and BCE R-351 to BCE VORTAC.

COALDALE TRANSITION (FFU9.OAL): From over FFU VORTAC on FFU R-170 and MLF R-026 to MLF VORTAC, then on MLF R-249 and ILC R-068 to ILC VORTAC, then on ILC R-249 and TPH R-066 to TPH VORTAC, then on TPH R-251 and OAL R-070 to OAL VORTAC.

HANKSVILLE TRANSITION (FFU9.HVE): From over FFU VORTAC on FFU R-133 and HVE R-320 to HVE VORTAC.

MILFORD TRANSITION (FFU9.MLF): From over FFU VORTAC on FFU R-170 and MLF R-026 to MLF VORTAC.

SW-4, 11 JUN 2026 to 09 JUL 2026

SW-4, 11 JUN 2026 to 09 JUL 2026