

ROCK SPRINGS  
116.0 OCS  
Chan 107

MALAD CITY  
117.4 MLD  
Chan 121

WASATCH  
116.8 TCH  
Chan 115

FAIRFIELD  
116.6 FFU  
Chan 113

MYTON  
112.7 MTU  
Chan 74

GRAND JUNCTION  
112.4 JNC  
Chan 71

DELTA  
116.1 DTA  
Chan 108

TWIN FALLS  
113.1 TWF  
Chan 78

D-ATIS  
124.75 125.625  
CLNC DEL  
127.3 379.975  
CPDLC  
SALT LAKE CITY DEP CON  
128.6 322.3

**TOP ALTITUDE:  
10000**

NOTE: RADAR required.  
NOTE: This is a RADAR vector departure  
to assigned route or fix.

**TAKEOFF MINIMUMS**

Rwys 14, 16R, 16L, 17: Assigned heading 163°, standard with minimum climb of 260' per NM to 6000. Assigned heading 283° CW 343°, standard with minimum climb of 400' per NM to 8300.

Rwy 32: Assigned heading 263° CW 343° standard with minimum climb of 498' per NM to 7800 or 400-1 with minimum climb of 260' per NM to 7800.

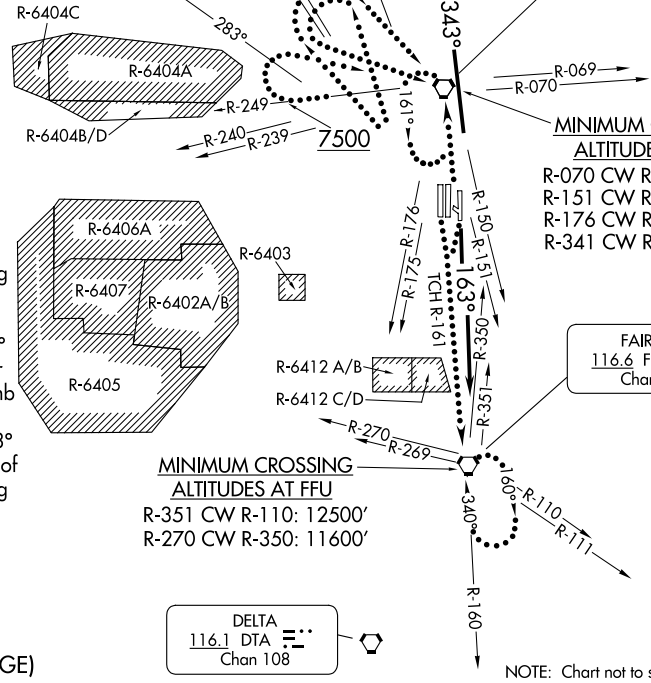
Rwys 34L, 34R, 35: Assigned heading 263° CW 322°, standard with minimum climb of 260' per NM to 7800. Assigned heading 323° CW 343°, standard with minimum climb of 260' per NM to 7800.

**MINIMUM CROSSING  
ALTITUDES AT TCH**

- R-070 CW R-150: 11400'
- R-151 CW R-175: 8200'
- R-176 CW R-239: 9900'
- R-341 CW R-069: 10400'

**MINIMUM CROSSING  
ALTITUDES AT FFU**

- R-351 CW R-110: 12500'
- R-270 CW R-350: 11600'



NOTE: Chart not to scale.

(CONTINUED ON FOLLOWING PAGE)



DEPARTURE ROUTE DESCRIPTION

TAKEOFF RUNWAYS 14, 16L, 16R, 17: Climb heading 163° or as assigned, maintain 10000 or assigned lower altitude. Thence . . . .

TAKEOFF RUNWAYS 32, 34L, 34R, 35: Climb heading 343° or as assigned, maintain 10000 or assigned lower altitude. Thence . . . .

. . . . expect vectors to assigned route or fix. Expect clearance to filed altitude 10 minutes after departure. Aircraft filed/assigned heading 334° CW 112° expect RADAR vectors eastbound leaving 11000 due to high terrain east of TCH VORTAC.

LOST COMMUNICATIONS: If not in contact with departure control 1 minute after takeoff:

RUNWAYS 14, 16L and 17: Assigned heading 163°, turn right thence . . . .

RUNWAY 16R: Assigned heading 163°, turn left thence . . . .

. . . . climb to 11000 on TCH R-161 to FFU VORTAC. Aircraft departing FFU VORTAC R-111 CW R-269, climb on assigned route. All others continue climb in FFU VORTAC holding pattern to cross FFU VORTAC at or above: R-351 CW R-110, 12500; R-270 CW R-350, 11600.

RUNWAYS 14, 16L, 16R, 17: Assigned heading 283° CW 343°, fly assigned heading to 11000. Then, aircraft heading 283° CW 313°, execute a climbing right turn thence . . . .

. . . . aircraft heading 314° CW 343° execute a climbing left turn, thence . . . .

. . . . proceed direct TCH VORTAC. Cross TCH VORTAC at or above 11400 and proceed on course.

RUNWAYS 32, 34L, 34R, 35: Climb direct TCH VORTAC. Aircraft departing TCH VORTAC R-240 CW R-340, climb on course. All others, continue climb on TCH R-249 to 7500, then climbing right turn direct TCH VORTAC. Continue climb in TCH VORTAC holding pattern to cross TCH VORTAC at or above: R-070 CW R-150, 11400; R-151 CW R-175, 8200; R-176 CW R-239, 9900; R-341 CW R-069, 10400. Climb on course.

SW-4, 11 JUN 2026 to 09 JUL 2026

SW-4, 11 JUN 2026 to 09 JUL 2026