

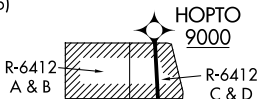
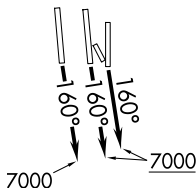
ZIONZ ONE DEPARTURE (RNAV)

AL-365 (FAA)

SALT LAKE CITY INTL (SLC)
SALT LAKE CITY, UTAH

D-ATIS
124.75 125.625
CLINC DEL
127.3 379.975
CPDLC
GND CON
121.9 348.6 (Rwys 14-32, 17-35)
123.775 348.6 (Rwys 16L-34R, 16R-34L)
SALT LAKE CITY TOWER
119.05 257.8 (Rwy 16L-34R)
118.3 257.8 (Rwys 14-32, 17-35)
132.65 336.4 (Rwy 16R-34L)
SALT LAKE CITY DEP CON
128.6 322.3

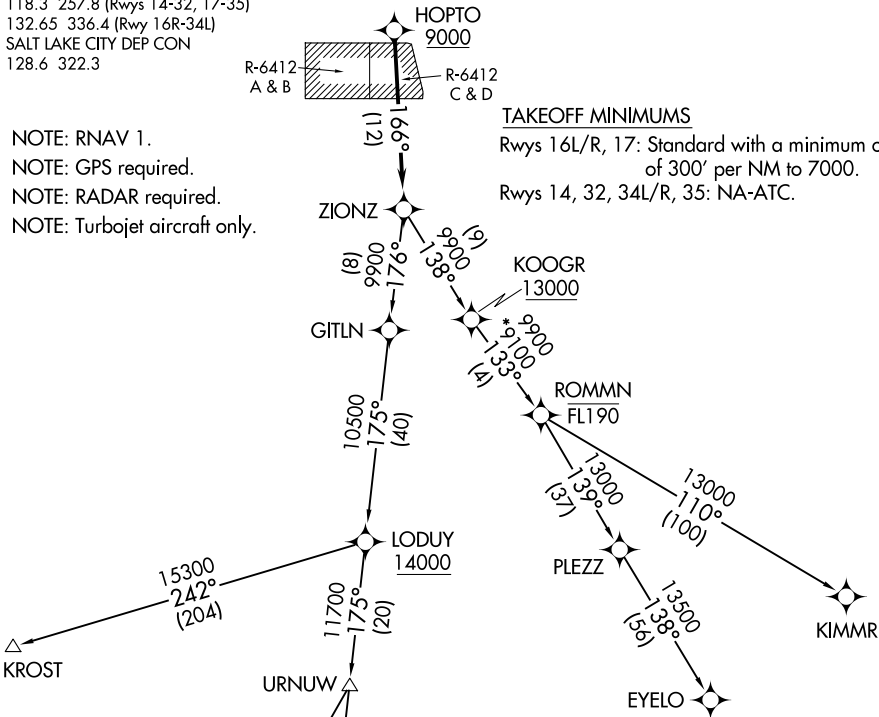
**TOP ALTITUDE:
FL230**



TAKEOFF MINIMUMS

Rwys 16L/R, 17: Standard with a minimum climb of 300' per NM to 7000.
Rwys 14, 32, 34L/R, 35: NA-ATC.

- NOTE: RNAV 1.
- NOTE: GPS required.
- NOTE: RADAR required.
- NOTE: Turbojet aircraft only.



DEPARTURE ROUTE DESCRIPTION

TAKEOFF RUNWAYS 16L/R, 17: Climb on heading 160° to 7000 then as assigned by ATC, thence. . . . on RADAR vectors to cross HOPTO at or above 9000, then on track 166° to ZIONZ, then on (transition). Maintain FL230 or lower filed altitude. Expect filed altitude 10 minutes after departure.

BRYCE CANYON TRANSITION (ZIONZ1.BCE)
ENOCH TRANSITION (ZIONZ1.EHK)
EYELO TRANSITION (ZIONZ1.EYELO)
KIMMR TRANSITION (ZIONZ1.KIMMR)
KROST TRANSITION (ZIONZ1.KROST)

NOTE: Chart not to scale.

ZIONZ ONE DEPARTURE (RNAV)

SW-4, 11 JUN 2026 to 09 JUL 2026

SW-4, 11 JUN 2026 to 09 JUL 2026