

# ALAMO FIVE DEPARTURE

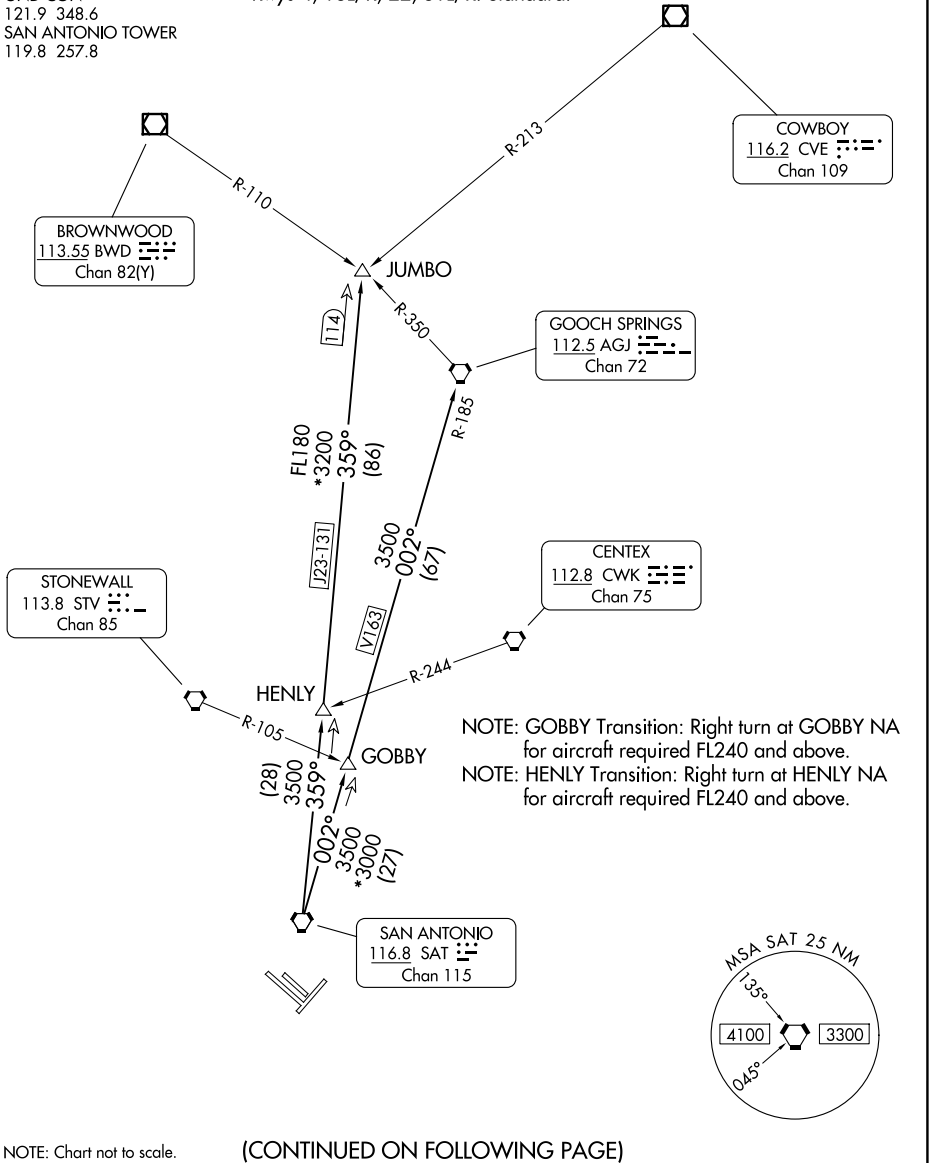
RADAR required.

**TOP ALTITUDE:  
5000**

SAN ANTONIO DEP CON  
125.1 307.0 (4, 22, 31)  
127.1 269.1 (13)  
D-ATIS  
118.9  
CLNC DEL  
126.7  
CPDLC  
GND CON  
121.9 348.6  
SAN ANTONIO TOWER  
119.8 257.8

### TAKEOFF MINIMUMS

Rwys 4, 13L/R, 22, 31L/R: Standard.



SC-3, 11 JUN 2026 to 09 JUL 2026

SC-3, 11 JUN 2026 to 09 JUL 2026

NOTE: Chart not to scale.

(CONTINUED ON FOLLOWING PAGE)

# ALAMO FIVE DEPARTURE

# ALAMO FIVE DEPARTURE



## DEPARTURE ROUTE DESCRIPTION

TAKEOFF RUNWAYS 4, 13L/R, 22, 31L/R: Climb on assigned heading for RADAR vectors to SAT VORTAC, maintain 5000, then on transition/route. Expect filed altitude 10 minutes after departure.

GOBBY TRANSITION (ALAMO5.GOBBY): From over SAT VORTAC on SAT R-002 to GOBBY.

GOOCH SPRINGS TRANSITION (ALAMO5.AGJ): From over SAT VORTAC on SAT R-002 to GOBBY, then on SAT R-002 and AGJ R-185 to AGJ VORTAC.

HENLY TRANSITION (ALAMO5.HENLY): From over SAT VORTAC on SAT R-359 to HENLY.

JUMBO TRANSITION (ALAMO5.JUMBO): From over SAT VORTAC on SAT R-359 to JUMBO.

SC-3, 11 JUN 2026 to 09 JUL 2026

SC-3, 11 JUN 2026 to 09 JUL 2026