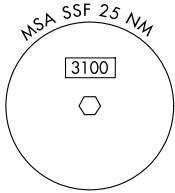


# BOWIE EIGHT DEPARTURE

SAN ANTONIO DEP CON  
125.7 290.225  
ATIS  
128.8  
CLNC DEL (When twr closed)  
121.7  
GND CON  
121.7 379.9  
STINSON TOWER \*  
118.2 (CTAF) 379.9

RADAR required.  
DME required.



SAN ANTONIO  
116.8 SAT  
Chan 115

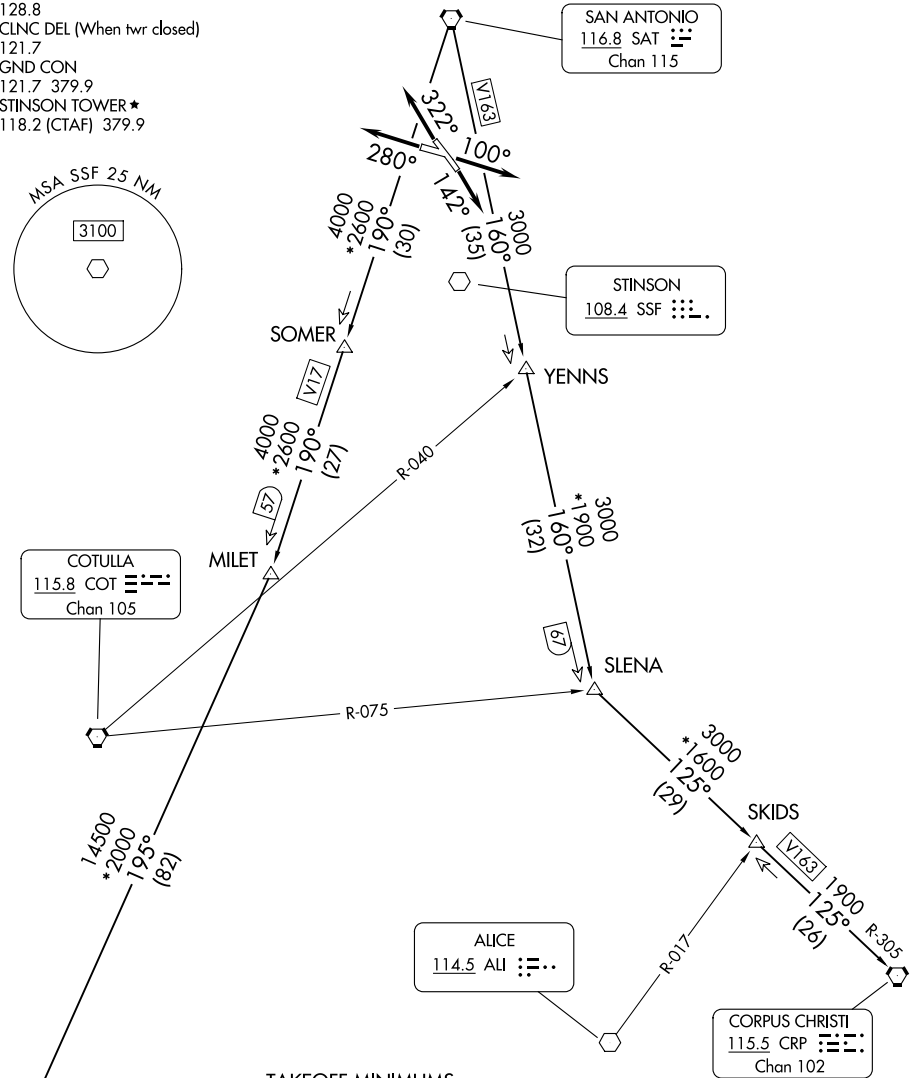
STINSON  
108.4 SSF

COTULLA  
115.8 COT  
Chan 105

ALICE  
114.5 ALI

CORPUS CHRISTI  
115.5 CRP  
Chan 102

LAREDO  
117.4 LRD  
Chan 121



### TAKEOFF MINIMUMS

- Rwy 10: Standard with minimum climb of 230'/NM to 1900.
- Rwy 14: Standard with minimum climb of 220'/NM to 1900.
- Rwy 28: 300-1 $\frac{5}{8}$  or standard with minimum climb of 230'/NM to 900, or alternatively, with standard takeoff minimums and a normal 200'/NM climb gradient, takeoff must occur no later than 1800' prior to DER.
- Rwy 32: Standard with minimum climb of 230'/NM to 1700.

NOTE: Chart not to scale.

(CONTINUED ON FOLLOWING PAGE)

# BOWIE EIGHT DEPARTURE

SC-3, 11 JUN 2026 to 09 JUL 2026

SC-3, 11 JUN 2026 to 09 JUL 2026

# BOWIE EIGHT DEPARTURE



## DEPARTURE ROUTE DESCRIPTION

TAKEOFF RUNWAY 10: Climb on heading 100° or as assigned by ATC for vectors to SAT VORTAC, thence. . . .

TAKEOFF RUNWAY 14: Climb on heading 142° or as assigned by ATC for vectors to SAT VORTAC, thence. . . .

TAKEOFF RUNWAY 28: Climb on heading 280° or as assigned by ATC for vectors to SAT VORTAC, thence. . . .

TAKEOFF RUNWAY 32: Climb on heading 322° or as assigned by ATC for vectors to SAT VORTAC, thence. . . .

. . . .on transition/route. Maintain ATC assigned altitude. Expect filed altitude 10 minutes after departure.

CORPUS CHRISTI TRANSITION (BOWIE8.CRP): From over SAT VORTAC on SAT R-160 to SLENA, then on CRP R-305 to CRP VORTAC.

LAREDO TRANSITION (BOWIE8.LRD): From over SAT VORTAC on SAT R-190 to MILET, then on LRD R-015 to LRD VORTAC.

SC-3, 11 JUN 2026 to 09 JUL 2026

SC-3, 11 JUN 2026 to 09 JUL 2026