

SNIDR TWO DEPARTURE (RNAV)

6200 JUN 60 11 JUN 2026 to 09 JUL 2026

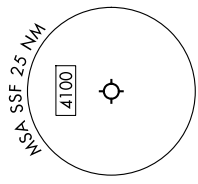
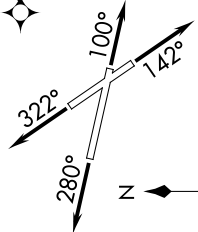
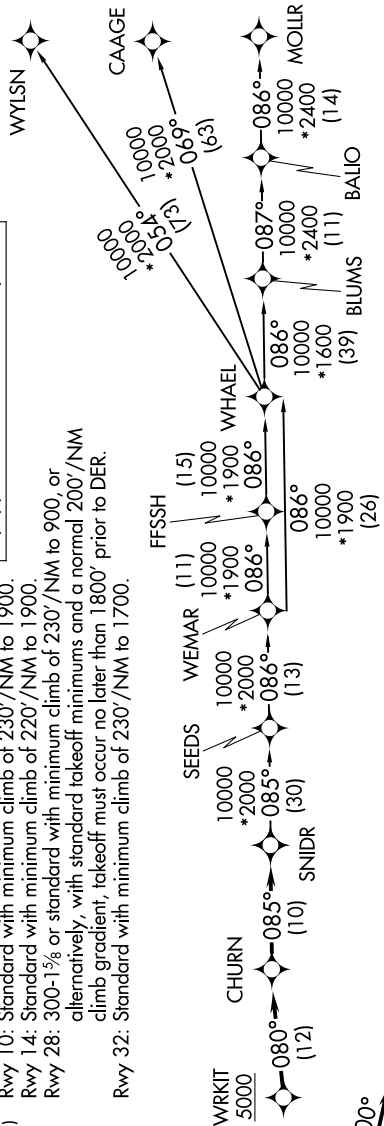
SAN ANTONIO DEP CON
125.7 290.225
ATIS
128.8
CLNC DEL (When twr closed)
121.7
GND CON
121.7 379.9
STINSON TOWER *
118.2 379.9

TAKEOFF MINIMUMS

- Rwy 10: Standard with minimum climb of 230'/NM to 1900.
- Rwy 14: Standard with minimum climb of 220'/NM to 1900.
- Rwy 28: 300-1% or standard with minimum climb of 230'/NM to 900, or alternatively, with standard takeoff minimums and a normal 200'/NM climb gradient, takeoff must occur no later than 1800' prior to DER.
- Rwy 32: Standard with minimum climb of 230'/NM to 1700.

RNAV 1 - DME/DME/IRU or GPS.
RADAR required for non-GPS equipped aircraft. RADAR required.

TOP ALTITUDE: ASSIGNED BY ATC



NOTE: Chart not to scale.

DEPARTURE ROUTE DESCRIPTION

- TAKEOFF RUNWAY 10: Climb on heading 100° or as assigned by ATC, for vectors to WRKIT, thence. . .
- TAKEOFF RUNWAY 14: Climb on heading 142° or as assigned by ATC, for vectors to WRKIT, thence. . .
- TAKEOFF RUNWAY 28: Climb on heading 280° or as assigned by ATC, for vectors to WRKIT, thence. . .
- TAKEOFF RUNWAY 32: Climb on heading 322° or as assigned by ATC, for vectors to WRKIT, thence. . .
- . . . on track 080° to CHURN, then on track 085° to SNIDR. Expect filed altitude 10 minutes after departure.

- BLUMS TRANSITION (SNIDR2.BLUMS)
- CAAGE TRANSITION (SNIDR2.CAAGE)
- FFSSH TRANSITION (SNIDR2.FFSSH)
- MOLLR TRANSITION (SNIDR2.MOLLR)
- SEEDS TRANSITION (SNIDR2.SEEDS)
- WEMAR TRANSITION (SNIDR2.WEMAR)
- WHAEL TRANSITION (SNIDR2.WHAEL)
- WYLSN TRANSITION (SNIDR2.WYLSN)

SNIDR TWO DEPARTURE (RNAV)