

VOR SSF <b>108.4</b>	APP CRS <b>343°</b>	Rwy Ldg <b>3530</b> TDZE <b>571</b> Apt Elev <b>578</b>
-------------------------	------------------------	---

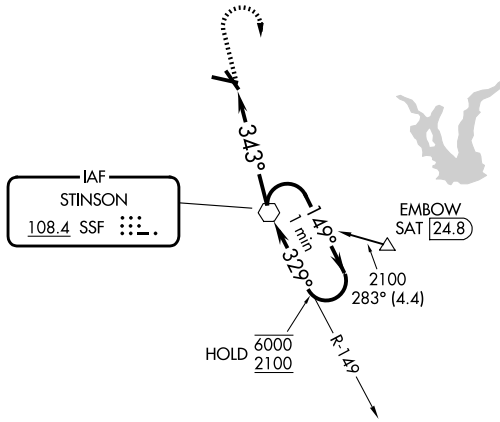
# VOR RWY 32

STINSON MUNI (SSF)

**NA** Rwy 32 helicopter visibility reduction below 3/4 SM NA.  
Straight-in Rwy 32 NA at night, Circling Rwy 10, NA at night.

MISSED APPROACH: Climb to 1400 then climbing right turn to 2500 direct SSF VOR and hold.

ATIS <b>128.8</b>	SAN ANTONIO APP CON <b>125.7 290.225</b>	STINSON TOWER ★ <b>118.2 (CTAF) 379.9</b>	GND CON <b>121.7 379.9</b>	UNICOM <b>122.95</b>
----------------------	---	--	-------------------------------	-------------------------



ELEV 578	<b>D</b>	TDZE 571
----------	----------	----------

REIL Rwy 10, 14, 28, and 32  
MIRL Rwy 10-28 and 14-32  
FAF to MAP 4.6 NM

Knots	60	90	120	150	180
Min:Sec	4:36	3:04	2:18	1:50	1:32

1400	2500	SSF	One Minute Holding Pattern	
		SSF VOR	149° → 6000	← 329° 2100
CATEGORY	A	B	C	D
S-32	1020-1 449 (500-1)		1020-1 3/8 449 (500-1 3/8)	NA
CIRCLING	1040-1 462 (500-1)	1120-1 542 (600-1)	1260-2 682 (700-2)	NA

SC-3, 11 JUN 2026 to 09 JUL 2026

SC-3, 11 JUN 2026 to 09 JUL 2026