

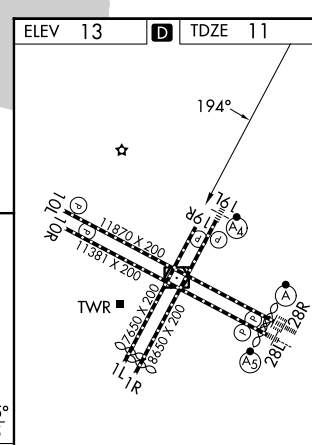
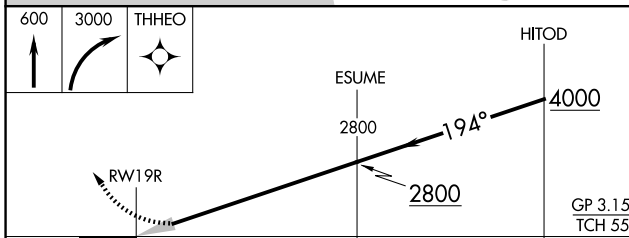
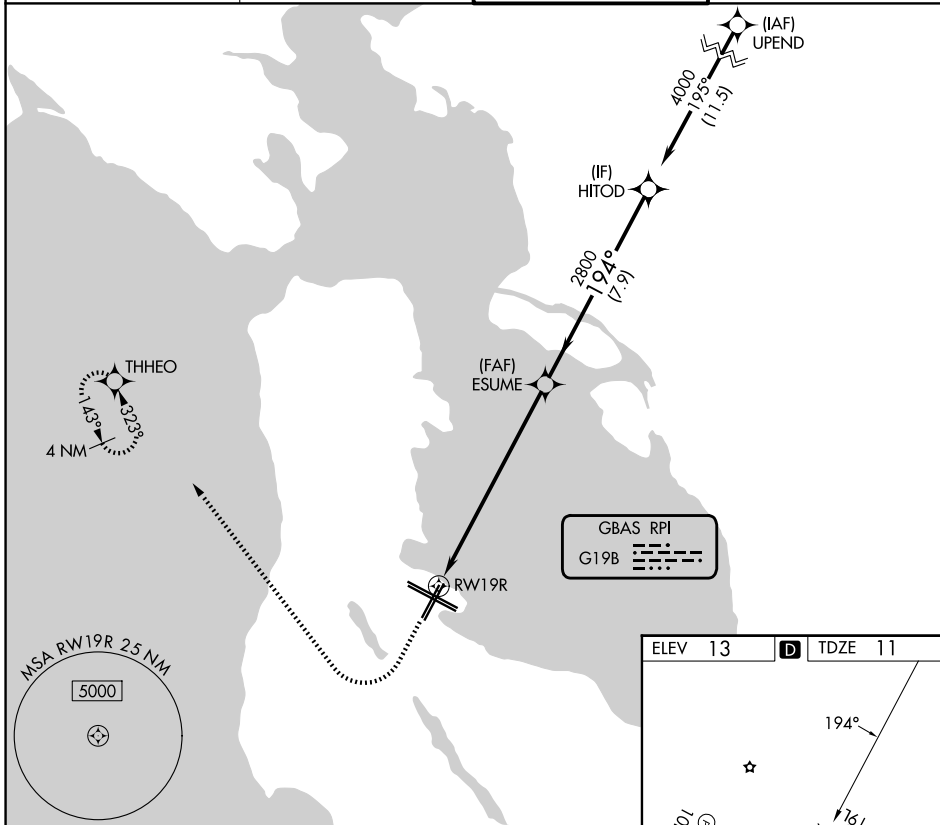
GBAS CH 21859 G19B	APP CRS 194°	Rwy Ldg TDZE Apt Elev	7650 11 13
--	------------------------	-----------------------------	---------------------------------------

GLS RWY 19R

SAN FRANCISCO INTL (SFO)

RNP APCH-GPS.		MISSED APPROACH: Climb to 600 then climbing right turn to 3000 direct THHEO and hold. Missed approach requires minimum climb of 395 feet per NM to 2100.
▼ ▲ NA	Autopilot coupled approach NA below 321 feet.	

D-ATIS 113.7 115.8 118.85	NORCAL APP CON 134.5 338.2	SAN FRANCISCO TOWER 120.5 269.1	GND CON 121.8
-------------------------------------	--------------------------------------	---	-------------------------



CATEGORY	A	B	C	D
GLS DA		321/45	310 (400-7/8)	

TDZL/RCLS Rwy 19L and 28R
REIL Rwy 1L, 1R and 10L
HIRL all rwy

SW-2, 11 JUN 2026 to 09 JUL 2026

SW-2, 11 JUN 2026 to 09 JUL 2026