

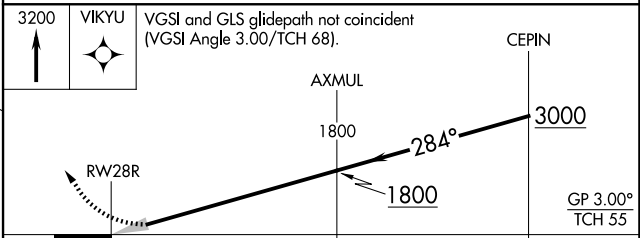
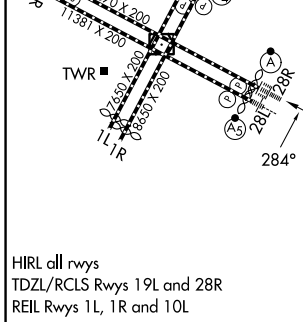
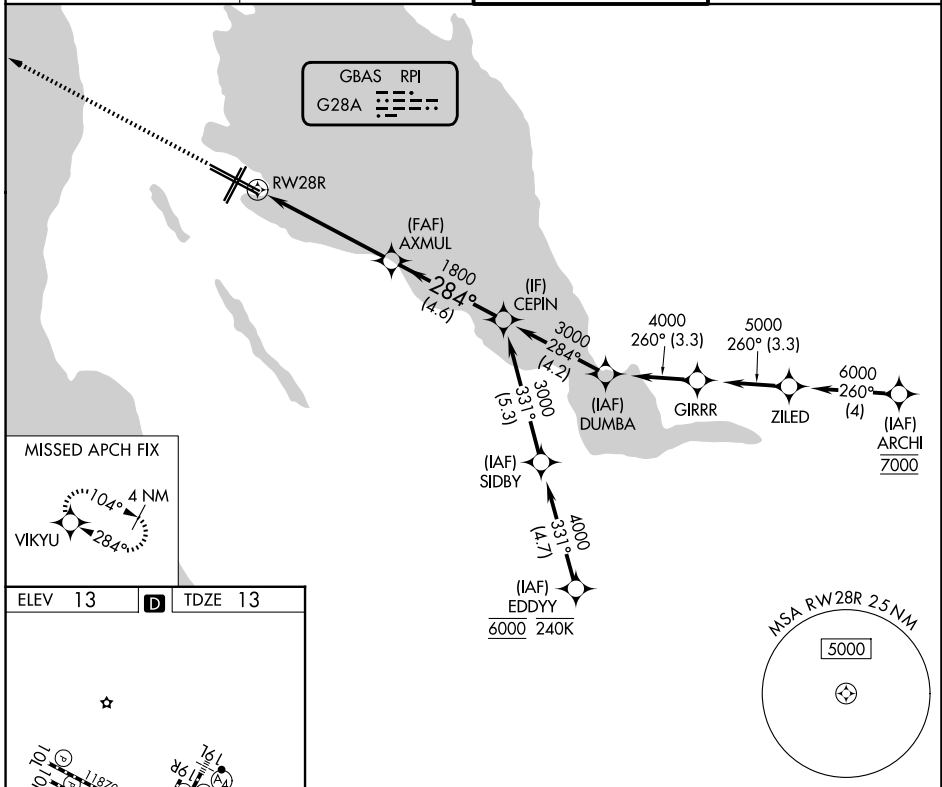
GBAS CH <b>20626</b> G28A	APP CRS <b>284°</b>	Rwy Ldg <b>11236</b> TDZE <b>13</b> Apt Elev <b>13</b>
---------------------------------	------------------------	--

# GLS RWY 28R

SAN FRANCISCO INTL (SFO)

RNP APCH-GPS.	ALSF-2	MISSED APPROACH: Climb to 3200 direct VIKYU and hold. *Missed approach requires minimum climb of 350 feet per NM to 1900; if unable to meet climb gradient, see RNAV (GPS) Z RWY 28R.
<p>Simultaneous approach authorized. Simultaneous operations require use of vertical guidance; maintain last assigned altitude until established on glidepath. Use of FD or AP required during simultaneous operations. Autopilot coupled approach NA below 213 feet.</p>		

D-ATIS <b>113.7 115.8 118.85</b>	NORCAL APP CON <b>134.5 338.2</b>	SAN FRANCISCO TOWER <b>120.5 269.1</b>	GND CON <b>121.8</b>
-------------------------------------	--------------------------------------	---	-------------------------



HIRL all rwys TDZL/RCLS Rwy 19L and 28R REIL Rwy 1L, 1R and 10L	<table border="1"> <tr> <td>CATEGORY</td> <td>A</td> <td>B</td> <td>C</td> <td>D</td> </tr> <tr> <td>GLS DA*</td> <td colspan="2">213/18</td> <td colspan="2">200 (200-1/2)</td> </tr> </table>	CATEGORY	A	B	C	D	GLS DA*	213/18		200 (200-1/2)	
CATEGORY	A	B	C	D							
GLS DA*	213/18		200 (200-1/2)								

SW-2, 11 JUN 2026 to 09 JUL 2026

SW-2, 11 JUN 2026 to 09 JUL 2026