

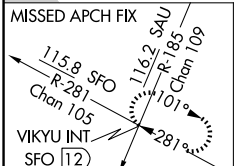
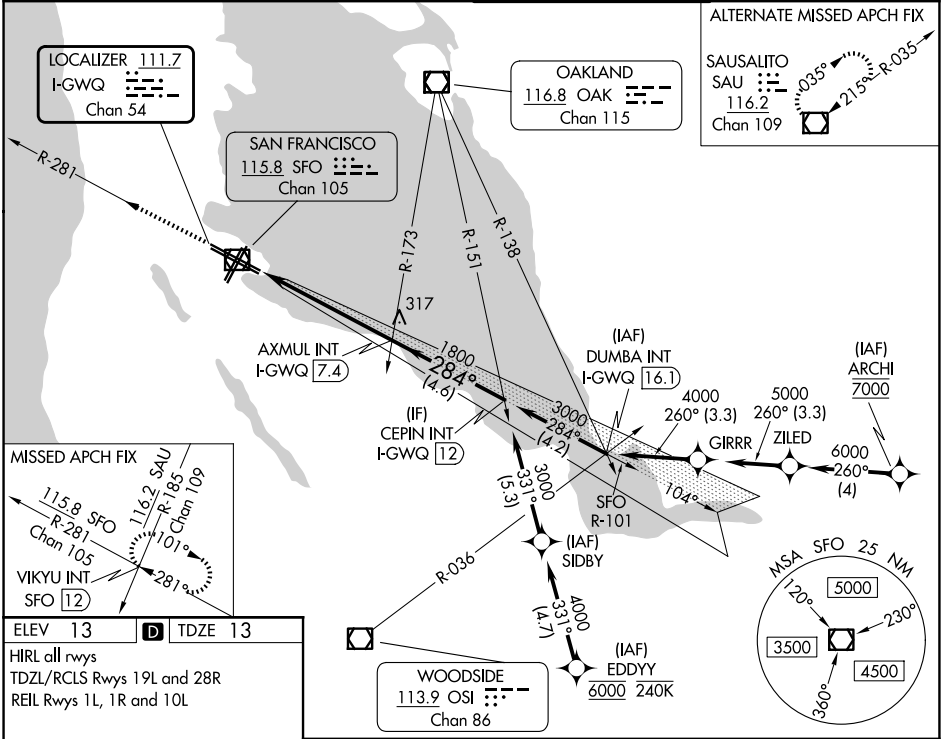
LOC/DME I-GWQ <b>111.7</b> Chan <b>54</b>	APP CRS <b>284°</b>	Rwy Ldg <b>11236</b> TDZE <b>13</b> Apt Elev <b>13</b>
---	------------------------	--

# ILS RWY 28R (SA CAT I)

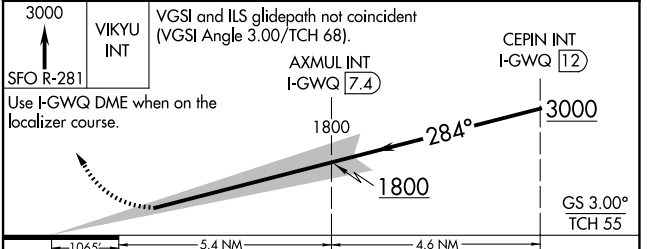
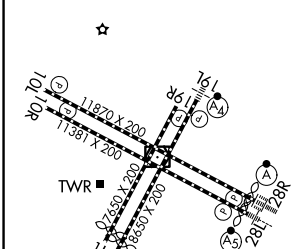
SAN FRANCISCO INTL (SFO)

RNAV 1-GPS or RADAR required for procedure entry. Requires specific OPSPEC, MSPEC, or LOA approval and use of HUD to DH.	ALSF-2 	MISSED APPROACH: Climb to 3000 on SFO VOR/DME R-281 to VIKYU INT/SFO 12 DME and hold. *Missed approach requires minimum climb of 350 feet per NM to 1900; if unable to meet climb gradient, see ILS or LOC RWY 28L.
---	------------	--

D-ATIS <b>113.7 115.8 118.85</b>	NORCAL APP CON <b>134.5 338.2</b>	SAN FRANCISCO TOWER <b>120.5 269.1</b>	GND CON <b>121.8</b>
-------------------------------------	--------------------------------------	---	-------------------------



ELEV 13	<b>D</b>	TDZE 13
HIRL all rwys		
TDZL/RCLS Rws 19L and 28R		
REIL Rws 1L, 1R and 10L		



CATEGORY	A	B	C	D
S-ILS 28R*	RA 163/14 150 DA 163			

**SA CATEGORY I ILS - SPECIAL AIRCREW & AIRCRAFT CERTIFICATION REQUIRED**

SW-2, 11 JUN 2026 to 09 JUL 2026

SW-2, 11 JUN 2026 to 09 JUL 2026