

LOC/DME I-SIA 108.9 Chan 26	APP CRS 194°	Rwy Ldg 19L 19R	19L 8650	19R 7650
		TDZE 11	11	11
		Apt Elev 13	13	13

ILS or LOC RWY 19L

SAN FRANCISCO INTL (SFO)

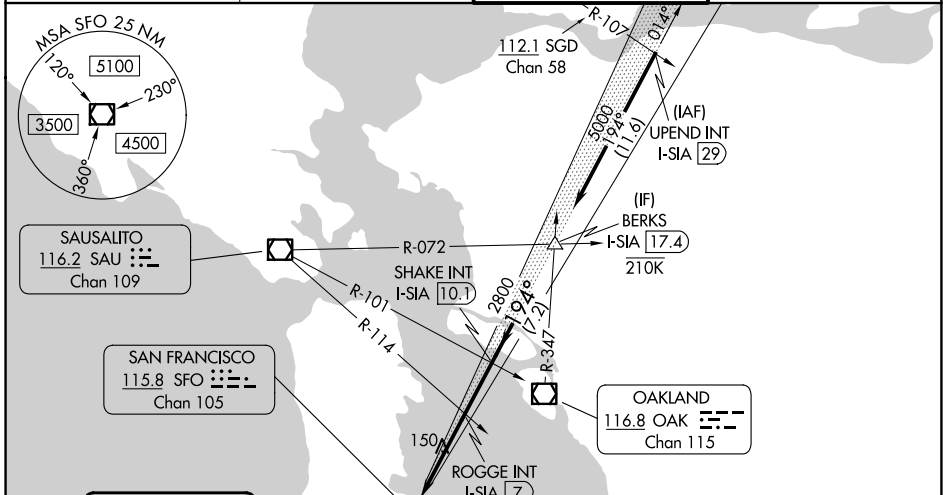
RNP APCH - GPS.

⚠ Inop table does not apply to ROGGE fix minimums S-LOC Rwy 19L or Sidestep Rwy 19R. Simultaneous approach authorized. Simultaneous operations require use of vertical guidance; maintain last assigned altitude until established on the glideslope. For inop ALS, increase S-ILS Rwy 19L* all Cats visibility to RVR 4500, S-ILS Rwy 19L all Cats visibility to 2½ SM. Sidestep NA until passing ROGGE INT.

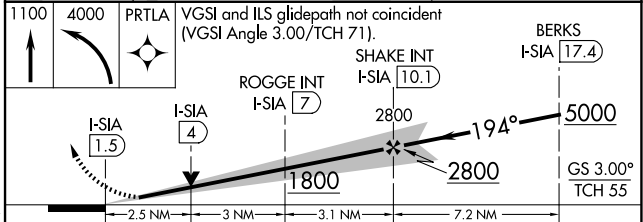
MALSF Rwy 19L

MISSED APPROACH: Climb to 1100 then climbing left turn to 4000 direct to PRTLA and hold.
*Missed approach requires minimum climb of 357 feet per NM to 2000.

D-ATIS 113.7 115.8 118.85	NORCAL APP CON 134.5 338.2	SAN FRANCISCO TOWER 120.5 269.1	GND CON 121.8
-------------------------------------	--------------------------------------	---	-------------------------



ELEV 13	D	TDZE 19L 11	TDZE 19R 11
194°			
FAF to MAP 8.6 NM			
Knots	60	90	120 150 180
Min:Sec	8:36	5:44	4:18 3:26 2:52



CATEGORY	A	B	C	D
S-ILS 19L*		300/40	289 (300-¾)	
S-ILS 19L		774-2	763 (800-2)	
S-LOC 19L	1800-1¼ 1789 (1800-1¼)	1800-1½ 1789 (1800-1½)	1800-3	1789 (1800-3)
ROGGE FIX MINIMUMS (DUAL VOR RECEIVERS REQUIRED)				
S-LOC 19L	880/40 869 (900-¾)	880/55 869 (900-1)	880-2½	869 (900-2½)
SIDESTEP 19R	880-2	869 (900-2)	880-3	869 (900-3)

SW-2, 11 JUN 2026 to 09 JUL 2026

SW-2, 11 JUN 2026 to 09 JUL 2026