

LOC/DME I-GWQ 111.7 Chan 54	APP CRS 284°	Rwy Ldg 11236	28R 10275	28L 13
		TDZE 13		13
		Apt Elev 13		13

ILS or LOC RWY 28R

SAN FRANCISCO INTL (SFO)

RNAV 1-GPS or RADAR required for procedure entry.

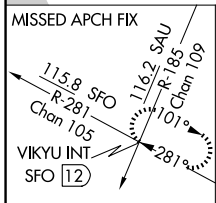
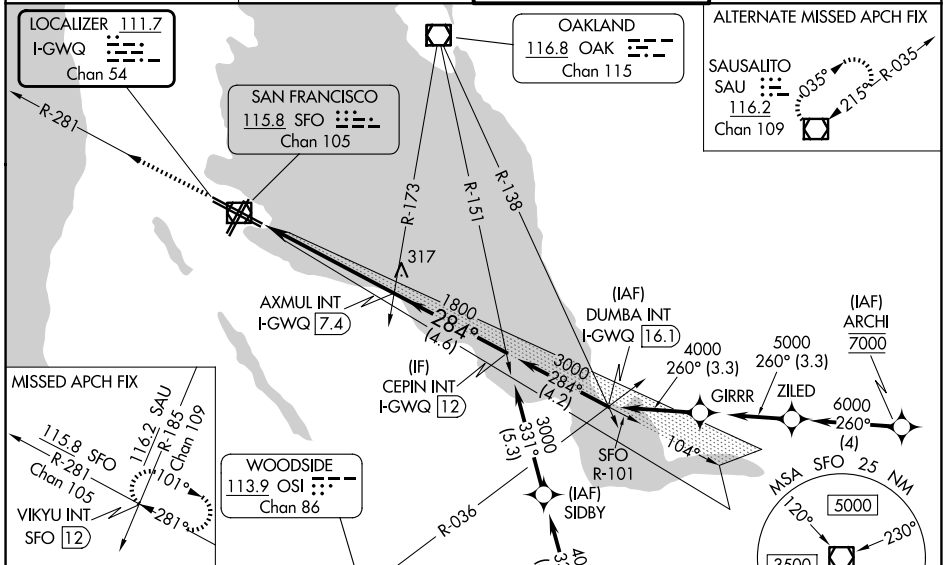
⚠ Circling NA to Rwy 10L, 10R, 19L, and 19R. Circling Rwy 1L, 1R NA at night. LOC procedure NA during simultaneous operations. For inop ALS increase S-LOC 28R* Cat C/D visibility to 1 3/8 SM. Simultaneous approach authorized. Simultaneous operations require use of vertical guidance; maintain last assigned altitude until established on glideslope.

ALSF-2 Rwy 28R

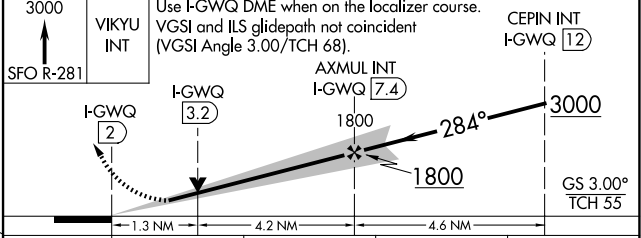
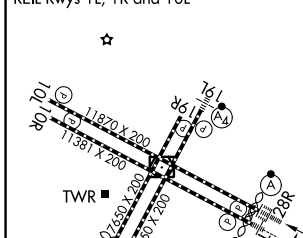
MALSR Rwy 28L

MISSED APPROACH: Climb to 3000 on SFO VOR/DME R-281 to VIKYU INT/SFO 12 DME and hold.
*Missed approach requires minimum climb of 350 feet per NM to 1900; if unable to meet climb gradient, see ILS or LOC RWY 28L.

D-ATIS 113.7 115.8 118.85	NORCAL APP CON 134.5 338.2	SAN FRANCISCO TOWER 120.5 269.1	GND CON 121.8
-------------------------------------	--------------------------------------	---	-------------------------



ELEV 13	TDZE 28R 13
HIRL all rwy	TDZE 28L 13
TDZL/RCLS Rwys 19L and 28R	
REIL Rwy 1L, 1R and 10L	



FAF to MAP 5.4 NM					
Knots	60	90	120	150	180
Min:Sec	5:24	3:36	2:42	2:10	1:48
CATEGORY	A	B	C	D	
S-ILS 28R*	213/18				200 (200-1/2)
S-LOC 28R*	480/24	467 (500-1/2)		480/50	467 (500-1)
SIDESTEP* 28L	480/55			467 (500-1)	
CIRCLING	740-1 727 (800-1)	960-1 1/4 947 (1000-1 1/4)	1560-3 1547 (1600-3)	NA	

SW-2, 11 JUN 2026 to 09 JUL 2026

SW-2, 11 JUN 2026 to 09 JUL 2026