

# NIITE FOUR DEPARTURE (RNAV)

AL-375 (FAA)

SAN FRANCISCO INTL (SFO)  
SAN FRANCISCO, CALIFORNIA

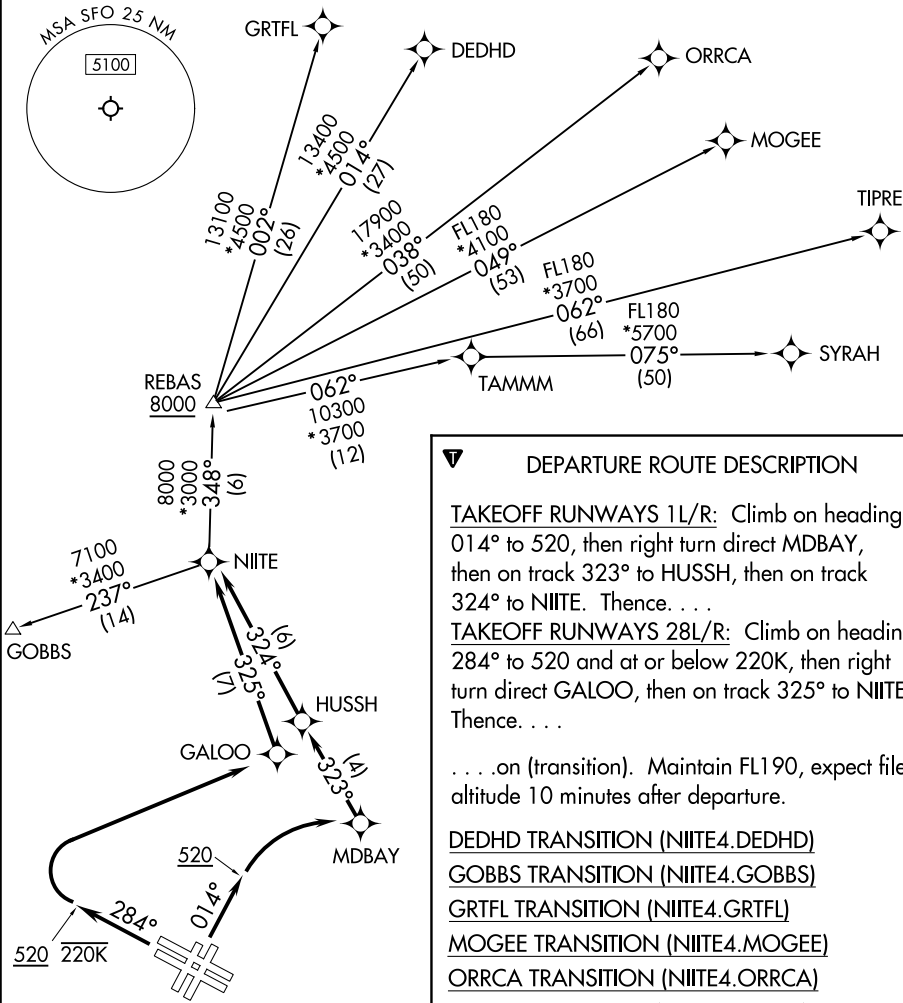
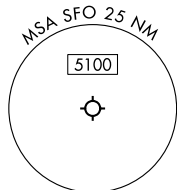
NORCAL DEP CON  
120.9 323.2  
D-ATIS  
113.7 115.8 118.85  
CLNC DEL  
118.2  
CPDLC  
GND CON  
121.8  
SAN FRANCISCO TOWER  
120.5 269.1

RNAV 1 - DME/DME/IRU or GPS.
RADAR required.

**TOP ALTITUDE:  
FL190**

### TAKEOFF MINIMUMS

Rwys 1L/R: Standard with minimum climb of 500'/NM to 520.  
Rwys 10L/R, 19L/R: NA-ATC.  
Rwy 28L: Standard with minimum climb of 535'/NM to 2100.  
Rwy 28R: Standard with minimum climb of 560'/NM to 2100.



**DEPARTURE ROUTE DESCRIPTION**

TAKEOFF RUNWAYS 1L/R: Climb on heading 014° to 520, then right turn direct MDBAY, then on track 323° to HUSSH, then on track 324° to NIITE. Thence. . .

TAKEOFF RUNWAYS 28L/R: Climb on heading 284° to 520 and at or below 220K, then right turn direct GALOO, then on track 325° to NIITE. Thence. . .

. . . on (transition). Maintain FL190, expect filed altitude 10 minutes after departure.

DEDHD TRANSITION (NIITE4.DEDHD)  
GOBBS TRANSITION (NIITE4.GOBBS)  
GRTFL TRANSITION (NIITE4.GRTFL)  
MOGEE TRANSITION (NIITE4.MOGEE)  
ORRCA TRANSITION (NIITE4.ORRCA)  
SYRAH TRANSITION (NIITE4.SYRAH)  
TIPRE TRANSITION (NIITE4.TIPRE)

NOTE: Chart not to scale.

# NIITE FOUR DEPARTURE (RNAV)

(NIITE4.NIITE) 11JUL24

SAN FRANCISCO, CALIFORNIA  
SAN FRANCISCO INTL (SFO)

SW-2, 11 JUN 2026 to 09 JUL 2026

SW-2, 11 JUN 2026 to 09 JUL 2026