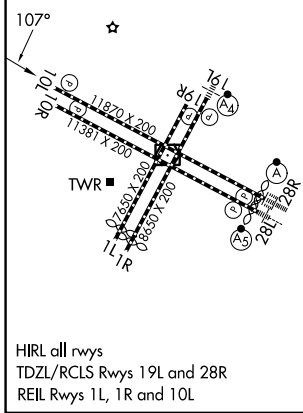
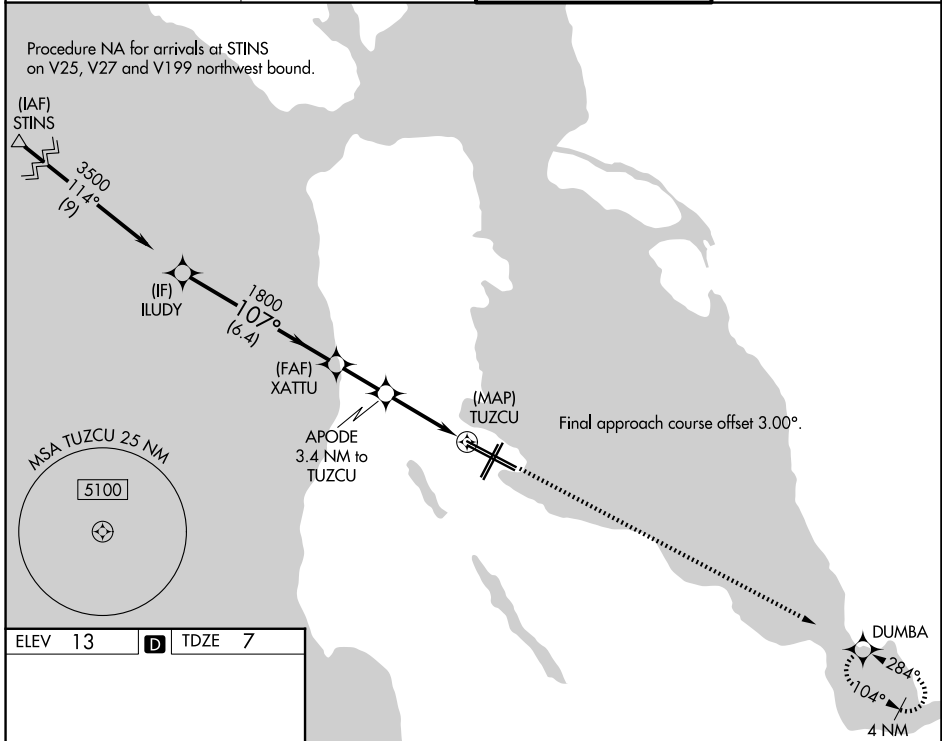


WAAS CH <b>93946</b> <b>W10A</b>	APP CRS <b>107°</b>	Rwy Ldg <b>11193</b> TDZE <b>7</b> Apt Elev <b>13</b>
--	------------------------	---

# RNAV (GPS) RWY 10L

SAN FRANCISCO INTL (SFO)

RNP APCH - GPS.		MISSED APPROACH: Climb to 500, then climb to 3000 direct DUMBA and hold.	
<p>▼ For uncompensated Baro-VNAV systems, LNAV/VNAV NA below 4°C or above 54°C. Rwy 10L helicopter visibility reduction below RVR 4000 NA.</p>			
D-ATIS <b>113.7 115.8 118.85</b>	NORCAL APP CON <b>134.5 338.2</b>	SAN FRANCISCO TOWER <b>120.5 269.1</b>	GND CON <b>121.8</b>



ELEV 13 **D** TDZE 7

HIRL all rwys  
TDZL/RCLS Rwys 19L and 28R  
REIL Rwys 1L, 1R and 10L

VGSi and RNAV glidepath not coincident (VGSi Angle 3.00/TCH 80).																							
ILUDY	XATTU	APODE	TUZCU																				
3500	1800	3.4 NM to TUZCU	1140																				
GP 3.00° TCH 55																							
<table border="1"> <tr> <td>500</td> <td>3000</td> <td>DUMBA</td> </tr> <tr> <td>↑</td> <td>↑</td> <td>✧</td> </tr> </table>				500	3000	DUMBA	↑	↑	✧														
500	3000	DUMBA																					
↑	↑	✧																					
<table border="1"> <tr> <td>6.4 NM</td> <td>2.1 NM</td> <td>3.4 NM</td> <td></td> </tr> <tr> <td>CATEGORY</td> <td>A</td> <td>B</td> <td>C</td> </tr> <tr> <td>LPV DA</td> <td colspan="2">257/40</td> <td>250 (300-3/4)</td> </tr> <tr> <td>LNAV/VNAV DA</td> <td colspan="2">494-1 3/8</td> <td>487 (500-1 3/8)</td> </tr> <tr> <td>LNAV MDA</td> <td>1080-1 1/4 1073 (1100-1 1/4)</td> <td>1080-1 1/2 1073 (1100-1 1/2)</td> <td>1080-3 1073 (1100-3)</td> </tr> </table>				6.4 NM	2.1 NM	3.4 NM		CATEGORY	A	B	C	LPV DA	257/40		250 (300-3/4)	LNAV/VNAV DA	494-1 3/8		487 (500-1 3/8)	LNAV MDA	1080-1 1/4 1073 (1100-1 1/4)	1080-1 1/2 1073 (1100-1 1/2)	1080-3 1073 (1100-3)
6.4 NM	2.1 NM	3.4 NM																					
CATEGORY	A	B	C																				
LPV DA	257/40		250 (300-3/4)																				
LNAV/VNAV DA	494-1 3/8		487 (500-1 3/8)																				
LNAV MDA	1080-1 1/4 1073 (1100-1 1/4)	1080-1 1/2 1073 (1100-1 1/2)	1080-3 1073 (1100-3)																				

SW-2, 11 JUN 2026 to 09 JUL 2026

SW-2, 11 JUN 2026 to 09 JUL 2026