

APP CRS	Rwy Ldg	10704
104°	TDZE	10
	Apt Elev	13

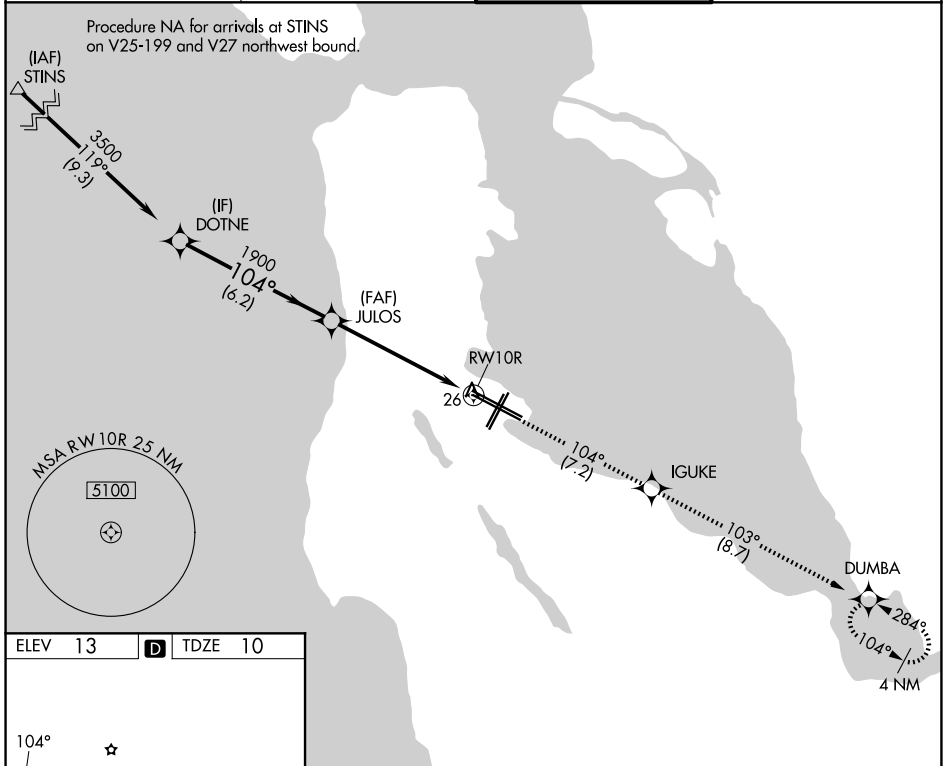
RNAV (RNP) Z RWY 10R

SAN FRANCISCO INTL (SFO)

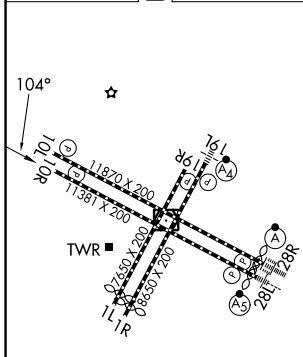
⚠ For uncompensated Baro-VNAV systems, procedure NA below 2°C (36°F) or above 54°C (130°F). GPS required. When VGSI inop, procedure NA at night.

⚠ MISSED APPROACH: Climb to 3600 on track 104° to IGUKE and on track 103° to DUMBA and hold.

D-ATIS 113.7 115.8 118.85	NORCAL APP CON 134.5 338.2	SAN FRANCISCO TOWER 120.5 269.1	GND CON 121.8
-------------------------------------	--------------------------------------	--	-------------------------



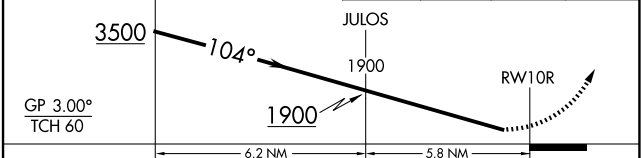
ELEV 13	D	TDZE 10
---------	----------	---------



TDZL/RCLS Rws 19L and 28R
REIL Rws 1L, 1R and 10L
HIRL all rws

VGSI and RNAV glidepath not coincident (VGSI Angle 3.00/TCH 68).

3600 ↑ tr 104°	IGUKE	tr 103°	DUMBA
----------------------	-------	---------	-------



CATEGORY	A	B	C	D
RNP 0.20 DA		396-1¼	386 (400-1¼)	
RNP 0.30 DA		1108-4	1098 (1100-4)	

AUTHORIZATION REQUIRED

SW-2, 11 JUN 2026 to 09 JUL 2026

SW-2, 11 JUN 2026 to 09 JUL 2026