

APP CRS	Rwy Ldg	10704
104°	TDZE	10
	Apt Elev	13

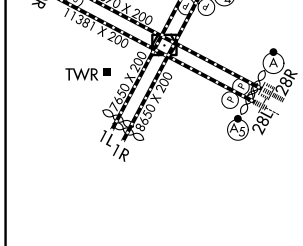
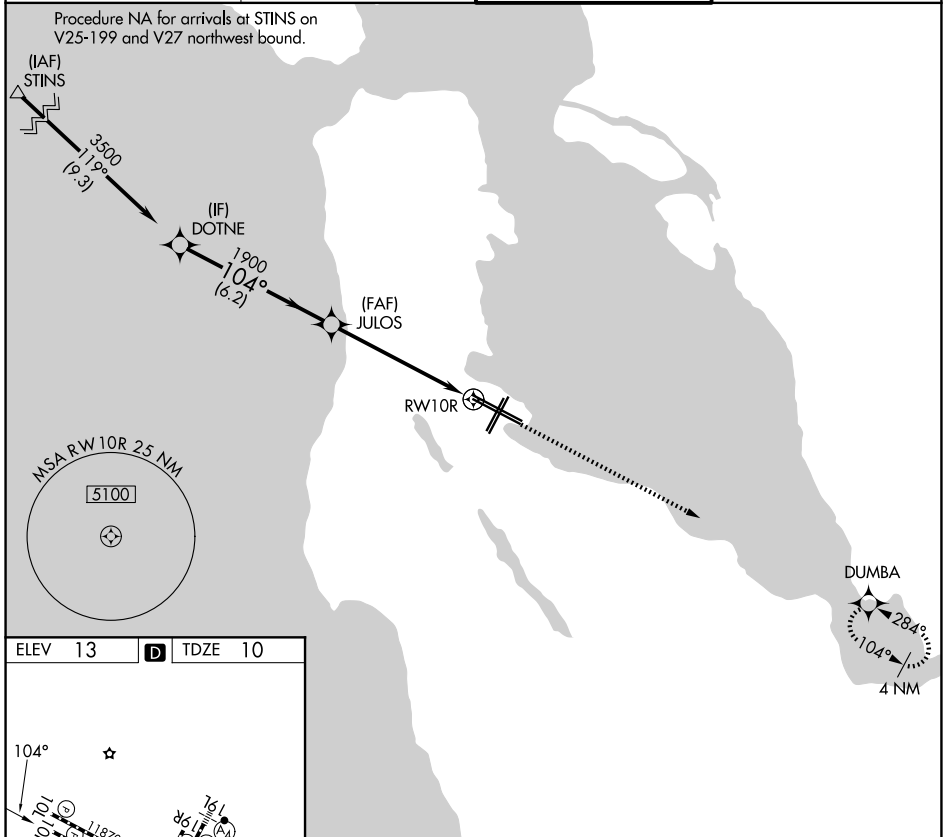
RNAV (GPS) Y RWY 10R

SAN FRANCISCO INTL (SFO)

⚠ DME/DME RNP-0.3 NA. When VGSI inop, procedure NA at night. Helicopter visibility reduction below RVR 5000 NA.

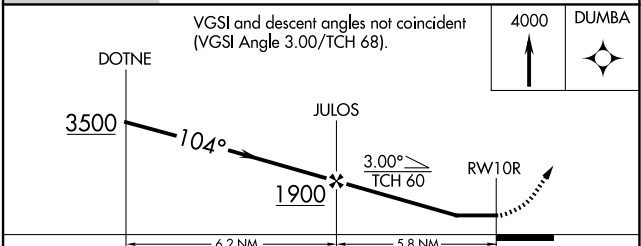
MISSED APPROACH: Climb to 4000 direct DUMBA and hold.

D-ATIS 113.7 115.8 118.85	NORCAL APP CON 134.5 338.2	SAN FRANCISCO TOWER 120.5 269.1	GND CON 121.8
-------------------------------------	--------------------------------------	---	-------------------------



ELEV 13 **D** TDZE 10

TDZL/RCLS Rwy 19L and 28R
REIL Rwy 1L, 1R and 10L
HIRL all rwy



CATEGORY	A	B	C	D
RNAV MDA	1200/60 1190 (1200-1½)	1200-1½ 1190 (1200-1½)	1200-3	1190 (1200-3)

SW-2, 11 JUN 2026 to 09 JUL 2026

SW-2, 11 JUN 2026 to 09 JUL 2026