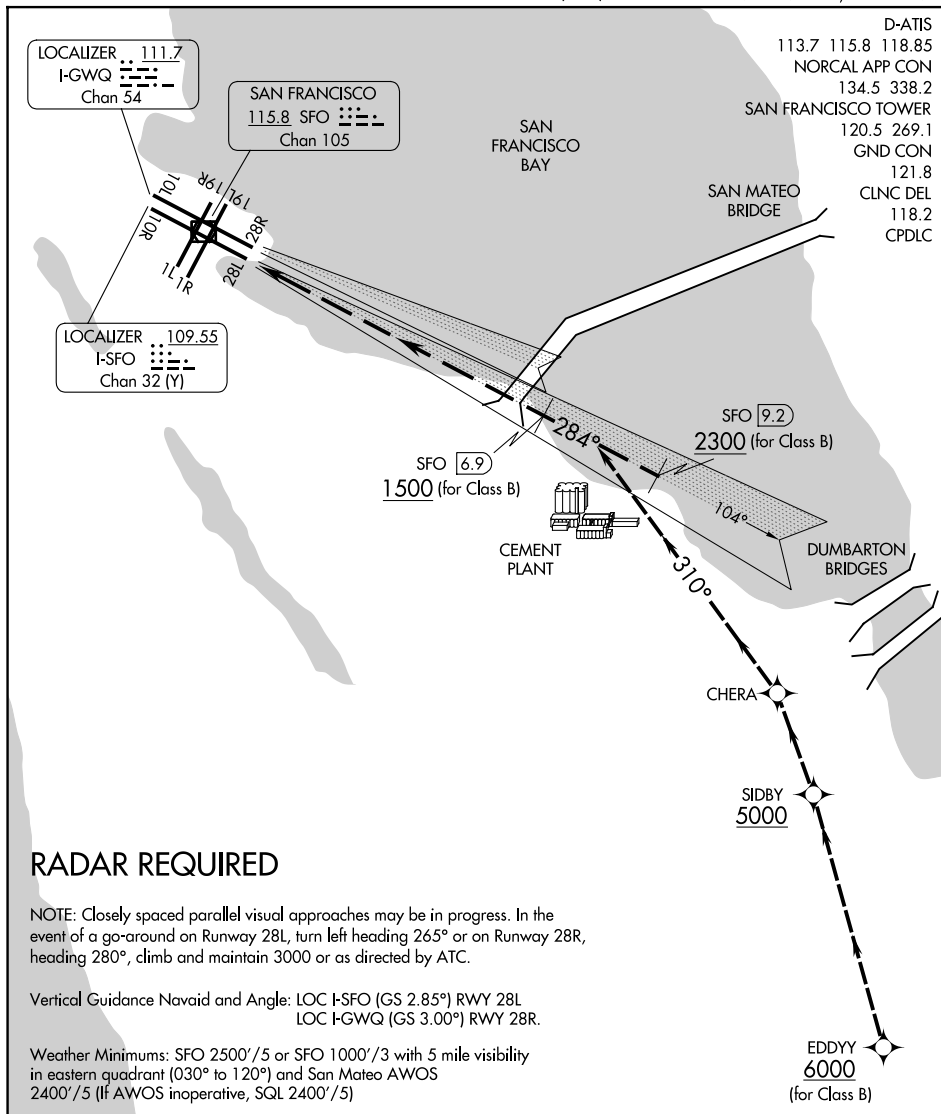


# TIPP TOE VISUAL RWY 28L/R

AL-375 (FAA)

SAN FRANCISCO INTL (SFO)  
SAN FRANCISCO, CALIFORNIA



SW-2, 11 JUN 2026 to 09 JUL 2026

SW-2, 11 JUN 2026 to 09 JUL 2026

## RADAR REQUIRED

NOTE: Closely spaced parallel visual approaches may be in progress. In the event of a go-around on Runway 28L, turn left heading 265° or on Runway 28R, heading 280°, climb and maintain 3000 or as directed by ATC.

Vertical Guidance Navaid and Angle: LOC I-SFO (GS 2.85°) RWY 28L  
LOC I-GWQ (GS 3.00°) RWY 28R.

Weather Minimums: SFO 2500'/5 or SFO 1000'/3 with 5 mile visibility in eastern quadrant (030° to 120°) and San Mateo AWOS 2400'/5 (If AWOS inoperative, SQL 2400'/5)

|      |   |   |   |   |   |   |   |   |    |    |    |    |    |    |    |
|------|---|---|---|---|---|---|---|---|----|----|----|----|----|----|----|
| 1 NM | 2 | 3 | 4 | 5 | 6 | 7 | 8 | 9 | 10 | 11 | 12 | 13 | 14 | 15 | 16 |
|------|---|---|---|---|---|---|---|---|----|----|----|----|----|----|----|

### TIPP TOE VISUAL APPROACH RUNWAY 28L/R

At/above 6000 at EDDYY, proceed to SIDBY at/above 5000, north turn at SIDBY to CHERA.  
 Runway 28L, from CHERA 310° heading to intercept the I-SFO localizer.  
 Runway 28R, from CHERA 310° heading to intercept the I-GWQ localizer.  
 In the event of a go-around on Runway 28L, turn left on heading 265°. For a go-around on Runway 28R, heading 280°, climb and maintain 3000 or as directed by ATC.

# TIPP TOE VISUAL RWY 28L/R

SAN FRANCISCO, CALIFORNIA  
SAN FRANCISCO INTL (SFO)