

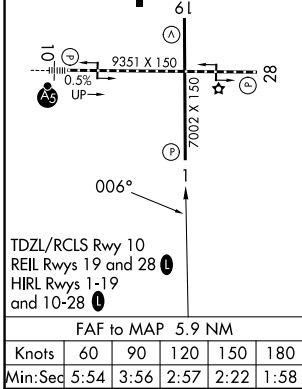
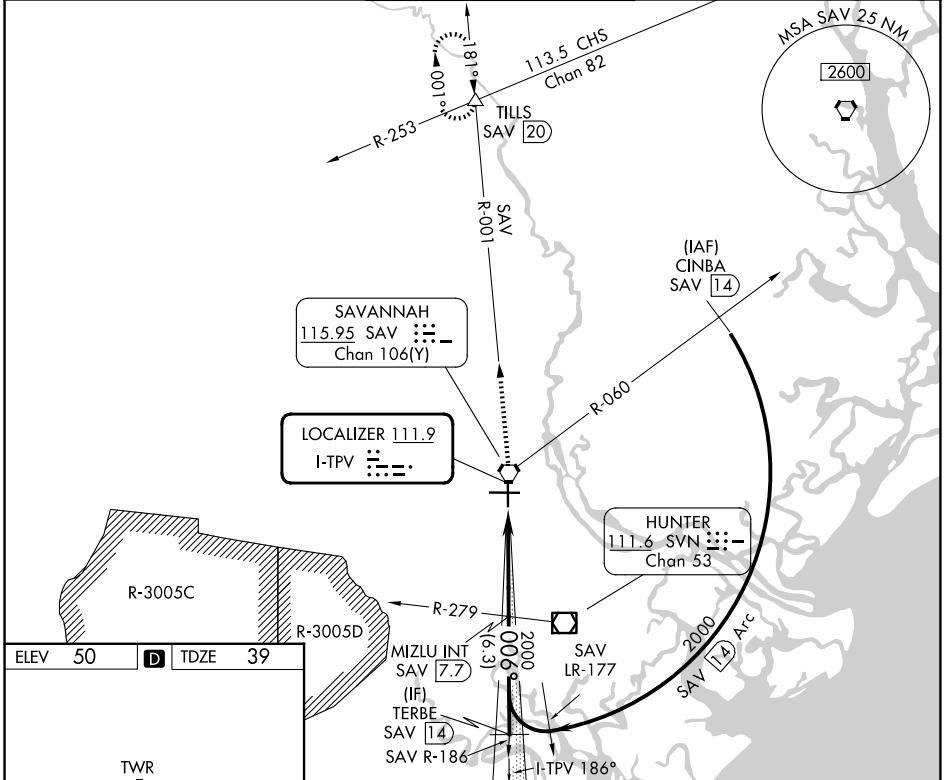
LOC I-TPV 111.9	APP CRS 006°	Rwy Ldg 7002
		TDZE 39
		Apt Elev 50

ILS or LOC RWY 1

SAVANNAH/HILTON HEAD INTL (SAV)

DME or RADAR required for procedure entry.		MISSED APPROACH: Climb to 1000 then climb to 4000 on SAV VORTAC R-001 to TILLS INT/SAV 20 DME and hold.
Autopilot coupled approach NA below 600.		

ATIS 123.75	SAVANNAH APP CON* 125.3 371.875	SAVANNAH TOWER* 125.975 (CTAF) 257.8	GND CON 121.9 348.6	UNICOM 122.95
-----------------------	---	--	-------------------------------	-------------------------



1000	4000	TILLS SAV 20	VGSI and ILS glidepath not coincident (VGSI Angle 3.00/TCH 74).	
↑ SAV R-001		MIZLU INT SAV 7.7	TERBE SAV 14	
*LOC Only.				
SAV 1.8	*SAV 3	2000	006°	2000
GS 3.00° TCH 57				
CATEGORY	A	B	C	D
S-ILS 1	239/40		200 (200-3/4)	
S-LOC 1	480/55	441 (500-1)	480-1 3/8	441 (500-1 3/8)
CIRCLING	520-1	470 (500-1)	740-2	740-2 1/4
			690 (700-2)	690 (700-2 1/4)

SE-4, 11 JUN 2026 to 09 JUL 2026

SE-4, 11 JUN 2026 to 09 JUL 2026