

WAAS CH 45606 W 23A	APP CRS 238°	Rwy Ldg TDZE Apt Elev	8002 3967 3967
---	------------------------	-----------------------------	---

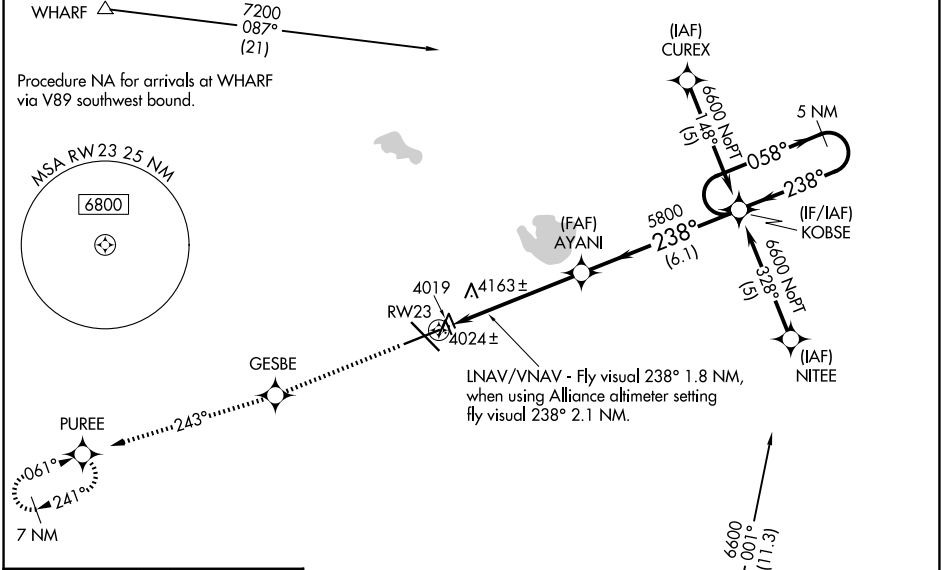
RNAV (GPS) RWY 23

SCOTTSDLUFF/WESTERN NEBRASKA RGNL/WM B HEILIG FLD (BFF)

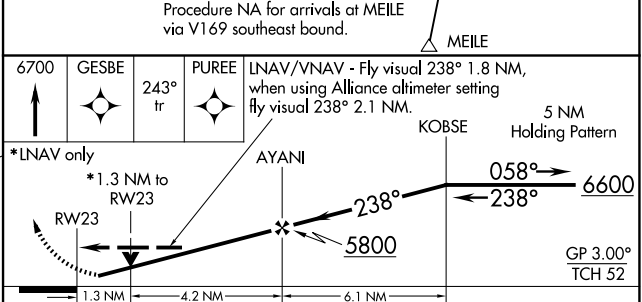
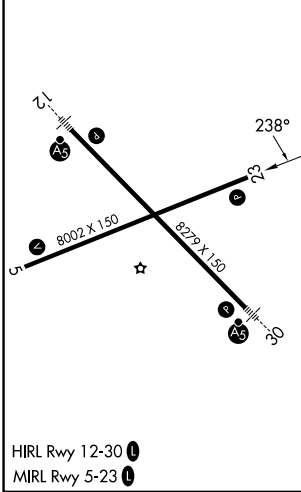
⚠ When local altimeter setting not received, use Alliance altimeter setting: increase LPV DA to 4347 feet and visibility 1/4 SM; increase LNAV/VNAV DA to 4679 feet; increase all MDAs 100 feet and visibility Cats C and D 1/2 SM. Baro-VNAV NA when using Alliance altimeter setting. For uncompensated Baro-VNAV systems, LNAV/VNAV NA below -22°C (-7°F) or above 41°C (105°F). VDP NA when using Alliance altimeter setting. Visibility reduction by helicopters NA. DME/DME RNP-0.3 NA.

MISSED APPROACH: Climb to 6700 direct GESBE and via 243° track to PUREE and hold.

ASOS 121.025	DENVER CENTER 127.95 338.2	UNICOM 123.0 (CTAF) 1
------------------------	--------------------------------------	---------------------------------



ELEV 3967	D	TDZE 3967
-----------	----------	-----------



CATEGORY	A	B	C	D
LPV DA	4256-1 289 (300-1)			
LNAV/VNAV DA	4588-2 621 (700-2)			
LNAV MDA	4420-1	453 (500-1)	4420-1 1/4 453 (500-1 1/2)	4420-1 1/2 453 (500-1 1/2)
CIRCLING	4500-1	533 (600-1)	4560-1 1/2 593 (600-1 1/2)	4740-2 1/2 773 (800-2 1/2)

NC-2, 11 JUN 2026 to 09 JUL 2026

NC-2, 11 JUN 2026 to 09 JUL 2026