

WAAS CH <b>53306</b> <b>W30A</b>	APP CRS <b>306°</b>	Rwy Ldg TDZE Apt Elev	<b>8279</b> <b>3952</b> <b>3967</b>
--	------------------------	-----------------------------	---

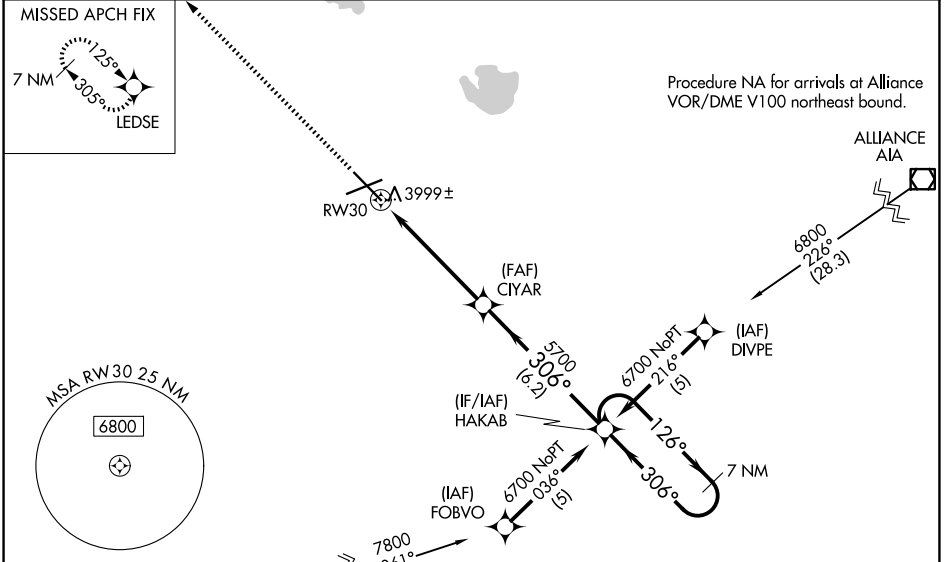
**RNAV (GPS) RWY 30**  
SCOTTSLUFF/WESTERN NEBRASKA RGNL/WM B HEILIG FLD (BTF)

**⚠** When local altimeter setting not received, use Alliance altimeter setting: increase LPV DA to 4293 feet and visibility ¼ SM; increase LNAV/VNAV DA to 4392 feet and visibility ¼ SM; increase all MDAs 100 feet and visibility Cats C and D ½ SM. For inoperative MALSRS, when using alliance altimeter setting, increase LPV all Cats visibility to 1¼. For uncompensated Baro-VNAV systems, LNAV/VNAV NA below -22°C (-7°F) or above 41°C (105°F). Baro-VNAV NA when using Alliance altimeter setting. VDP NA when using Alliance altimeter setting. DME/DME RNP-0.3 NA.

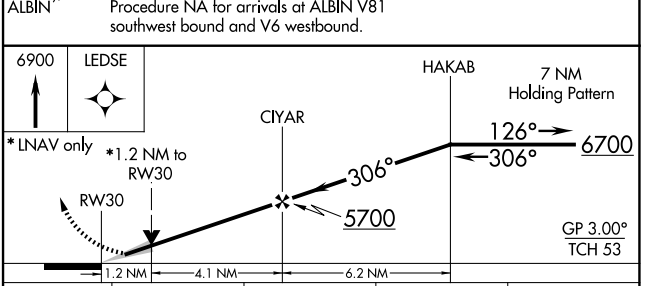
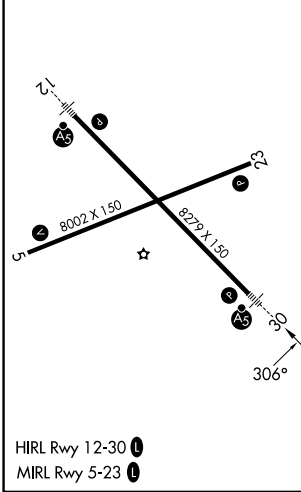


MISSED APPROACH: Climb to 6900 direct LEDSE and hold.

ASOS <b>121.025</b>	DENVER CENTER <b>127.95 338.2</b>	UNICOM <b>123.0 (CTAF) 0</b>
------------------------	--------------------------------------	---------------------------------



ELEV 3967	<b>D</b>	TDZE 3952
-----------	----------	-----------



CATEGORY	A	B	C	D
LPV DA		4202-½	250 (300-½)	
LNAV/VNAV DA		4301-¾	349 (400-¾)	
LNAV MDA	4380-½	428 (500-½)	4380-¾ 428 (500-¾)	4380-1 428 (500-1)
CIRCLING	4500-1	533 (600-1)	4560-1½ 593 (600-1½)	4740-2½ 773 (800-2½)

NC-2, 11 JUN 2026 to 09 JUL 2026

NC-2, 11 JUN 2026 to 09 JUL 2026