

VORTAC BFF 112.6 Chan 73	APP CRS 245°	Rwy Ldg TDZE Apt Elev 8002 3967 3967
--	------------------------	---

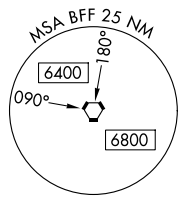
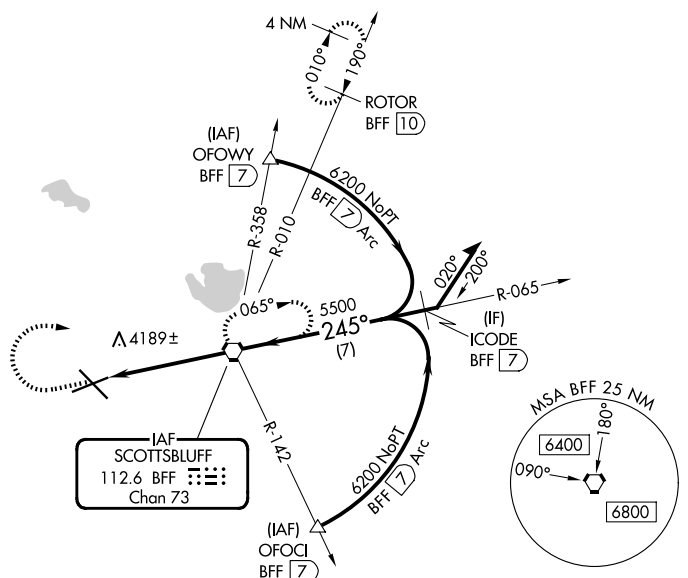
VOR or TACAN RWY 23

SCOTTSBLUFF/WESTERN NEBRASKA RGNL/WM B HEILIG FLD (BTF)

⚠ When local altimeter setting not received, use Alliance altimeter setting: increase all MDAs 100 feet and visibility Cats C and D ½ SM. VDP NA when using Alliance altimeter setting. Visibility reduction by helicopters NA.

MISSED APPROACH: Climb to 5000 then climbing right turn to 6500 direct BFF VORTAC and hold (TACAN aircraft continue climb to 7300 via BFF R-010 to ROTOR 10 DME and hold north, right turn 190° inbound).

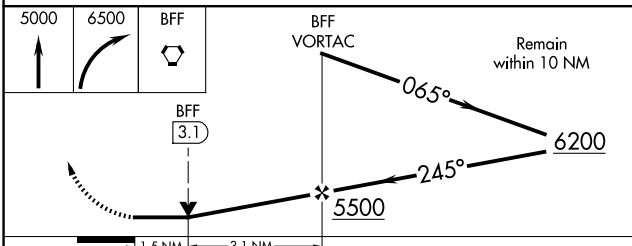
ASOS 121.025	DENVER CENTER 127.95 338.2	UNICOM 123.0 (CTAF) 0
------------------------	--------------------------------------	---------------------------------



ELEV 3967	D TDZE 3967
-----------	--------------------

HIRL Rwy 12-30 **0**
MIRL Rwy 5-23 **0**

FAF to MAP 4.7 NM					
Knots	60	90	120	150	180
Min:Sec	4:42	3:08	2:21	1:53	1:34



CATEGORY	A	B	C	D
S-23	4500-1 533 (600-1)	4500-1½ 533 (600-1½)	4500-1¾ 533 (600-1¾)	4500-2 533 (600-2)
CIRCLING	4500-1 533 (600-1)	4560-1½ 593 (600-1½)	4740-2½ 773 (800-2½)	

NC-2, 11 JUN 2026 to 09 JUL 2026

NC-2, 11 JUN 2026 to 09 JUL 2026