

HI ILS or LOC W RWY 15

LOC I-JKC 108.9	APCH CRS 149°	Rwy Idg 11,758 THRE 163 Arprt Elev 165
---------------------------	-------------------------	---

[USAF]

BARKSDALE AFB (KBAD)

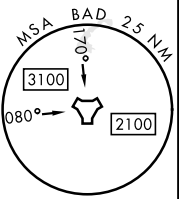
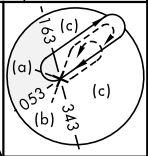
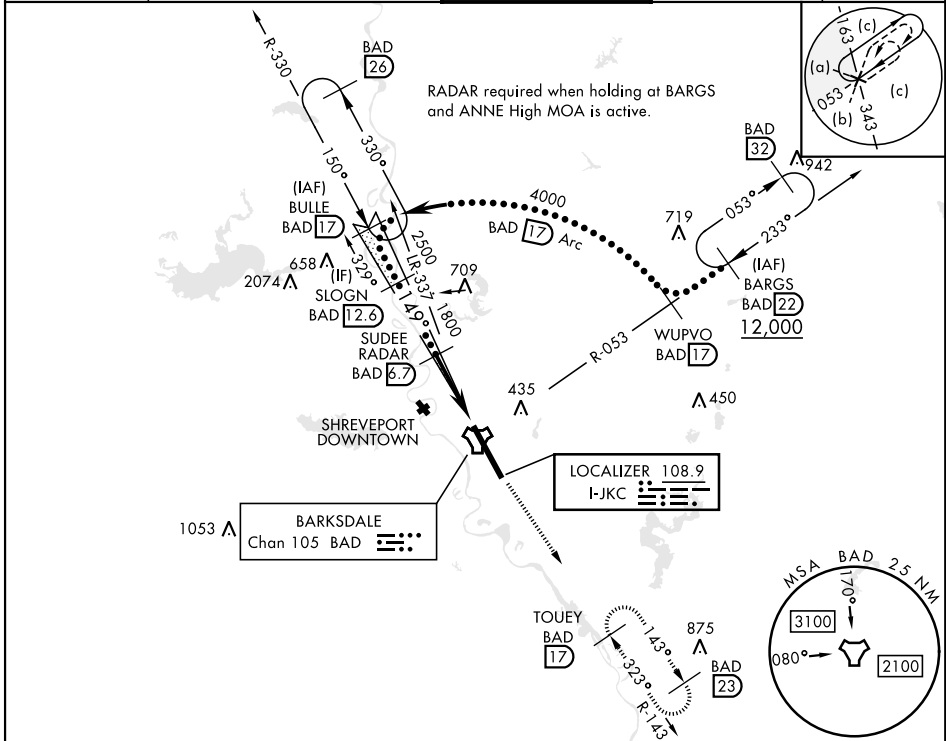
RADAR or DME required



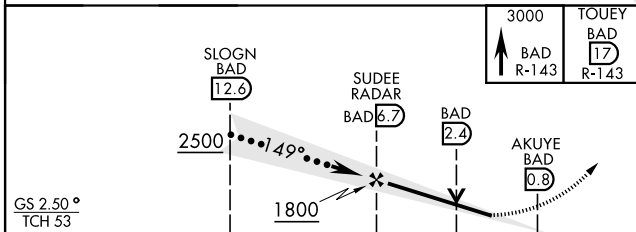
MISSED APPROACH: Climb to 3000 via BAD R-143 direct TOUEY and hold.

- * When ALS inop, increase CAT CDE RVR to 40 and vis to 3/4 mile.
- ** When ALS inop, increase CAT CDE vis to 1 3/8 miles.
- *** Circling not authorized W of Rwy.

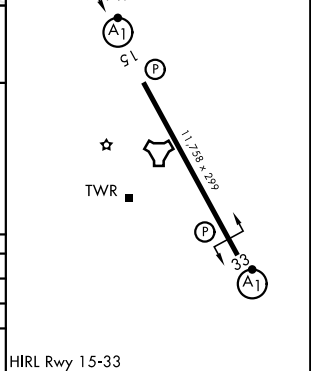
ATIS 307.025	SHREVEPORT APP CON 320°-152° 123.75 360.725 153°-319° 119.9 335.55	TOWER ★ 128.25 278.3	GND CON 121.8 253.5	ASR
------------------------	--	--------------------------------	-------------------------------	-----



EMERG SAFE ALT 100 NM 3300



ELEV	165	THRE	163
------	-----	------	-----



CATEGORY	C	D	E
S-ILS 15 *	365/24	200	(200-1/2)
S-LOC 15 **	640/50	475	(500-1)
CIRCLING***	NOT AUTHORIZED	780-2 615 (700-2)	780-2 1/4 615 (700-2 1/4)

HIRL Rwy 15-33

HI ILS or LOC W RWY 15

SC-4, 11 JUN 2026 to 09 JUL 2026

SC-4, 11 JUN 2026 to 09 JUL 2026