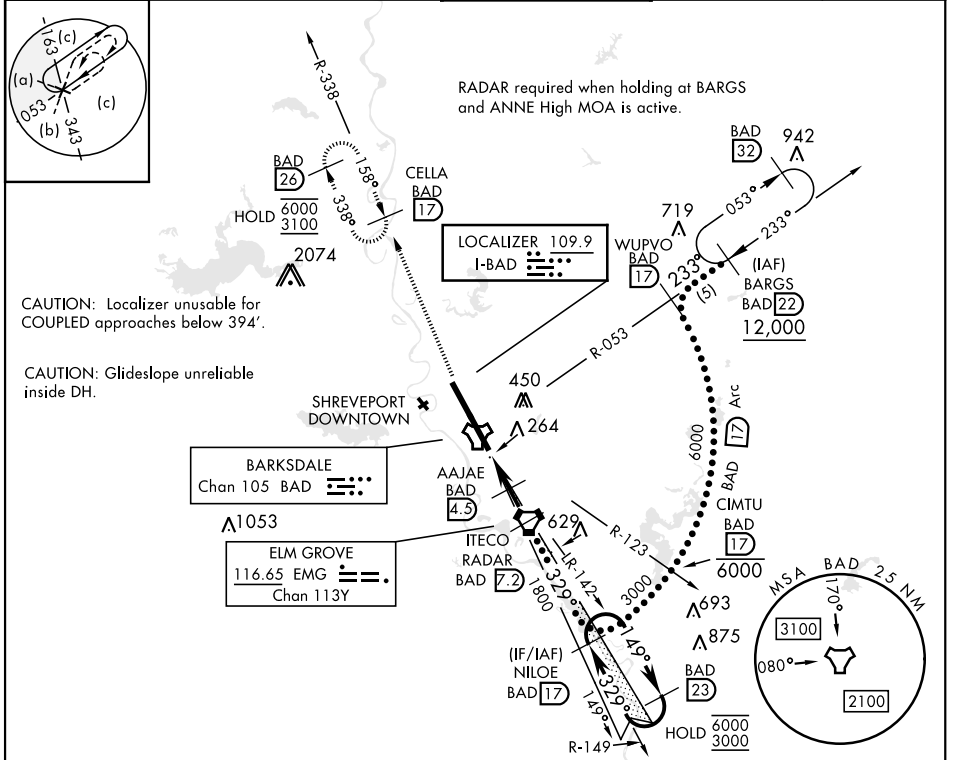


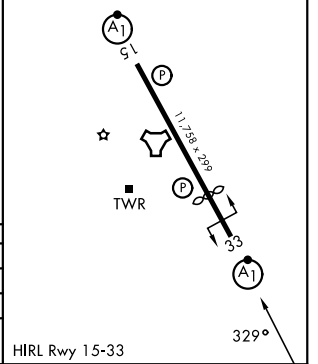
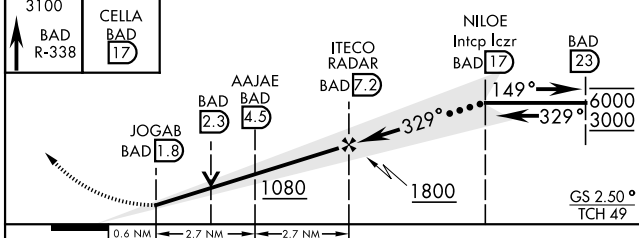
LOC I-BAD <b>109.9</b>	APCH CRS <b>329°</b>	Rwy Idg THRE Arpt Elev <b>8946</b> <b>161</b> <b>165</b>	[USAF]	BARKSDALE AFB (KBAD)
---------------------------	-------------------------	---	--------	----------------------

RNAV or RADAR required	ALSF-1 	MISSED APPROACH: Climb to 3100 on BAD TACAN R-338 to CELLA (BAD 17 DME) and hold.
<p>*When ALS inop, increase CAT CDE RVR to 40 and vis to 3/4 mile.                  **When ALS inop, increase CAT CDE RVR to 60 and vis to 1 1/8 miles.                  *** Circling not authorized W of Rwy.</p>		

ATIS <b>307.025</b>	SHREVEPORT APP CON 320°-152° <b>123.75 360.725</b> 153°-319° <b>119.9 335.55</b>	TOWER* <b>128.25 278.3</b>	GND CON <b>121.8 253.5</b>	ASR
------------------------	--	-------------------------------	-------------------------------	-----



EMERG SAFE ALT 100 NM 3200	ELEV 165	THRE 161
----------------------------	----------	----------



CATEGORY	C	D	E
S-ILS 33*	363/24	200 (200-1/2)	
S-LOC 33**	520/30	357 (400-%)	
CIRCLING ***	NOT AUTHORIZED	780-2 615 (700-2)	780-2 1/4 615 (700-2 1/4)

SC-4, 11 JUN 2026 to 09 JUL 2026

SC-4, 11 JUN 2026 to 09 JUL 2026