

BOSSIER CITY, LOUISIANA

ILS or LOC Y RWY 15

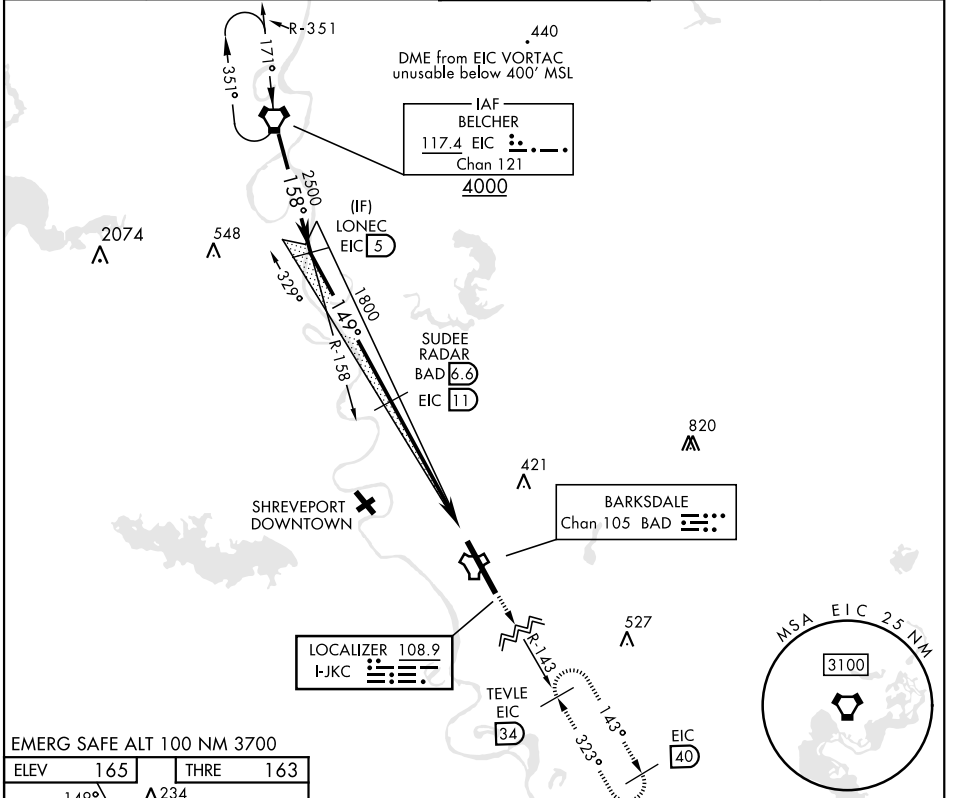
LOC I-JKC 108.9	APCH CRS 149°	Rwy Ldg 11,758 THRE 163 Arprt Elev 165
---------------------------	-------------------------	---

[USAF]

BARKSDALE AFB (KBAD)

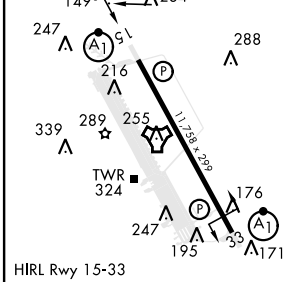
RADAR or DME required.	ALSF-1 	MISSED APPROACH: Climb to 2000, then climbing left turn to join EIC VORTAC R-143 outbound direct TEVLE (EIC 34 DME) and hold, maintain 3000.
* When ALS inop, increase RVR to 40 and vis to 3/4 mile. ** When ALS inop, increase CAT AB RVR to 55 and vis to 1 mile, CAT CDE vis to 1 3/8 miles. *** Circling not authorized W of Rwy.		

ATIS 307.025	SHREVEPORT APP CON 320°-152° 123.75 360.725 153°-319° 119.9 335.55	TOWER ★ 128.25 278.3	GND CON 121.8 253.5	ASR
------------------------	--	--------------------------------	-------------------------------	-----

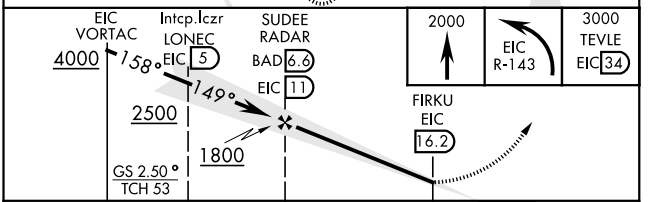


EMERG SAFE ALT 100 NM 3700

ELEV	165	THRE	163
------	-----	------	-----



FAF to MAP 5.2 NM					
Knots	60	90	120	150	180
Min:Sec	5:12	3:28	2:36	2:05	1:44



CATEGORY	A	B	C	D	E
S-ILS 15*	363/24		200	(200-1/2)	
S-LOC 15**	640/24	477 (500-1/2)	640/50	477	(500-1)
***	NOT AUTHORIZED		760-2 595 (600-2)	780-2 1/4 615 (700-2 1/4)	

BOSSIER CITY, LOUISIANA

32° 30' N-93° 40' W

BARKSDALE AFB (KBAD)

Amtd 6 25JUN15

ILS or LOC Y RWY 15

SC-4, 11 JUN 2026 to 09 JUL 2026

SC-4, 11 JUN 2026 to 09 JUL 2026