

BOSSIER CITY, LOUISIANA

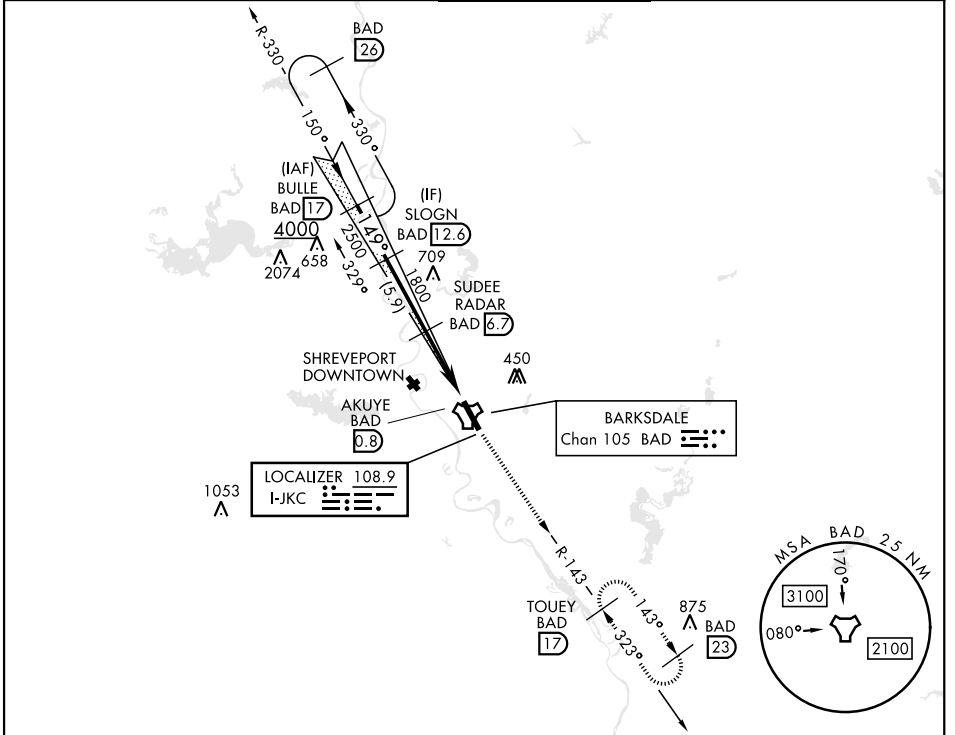
ILS or LOC Z RWY 15

LOC I-JKC 108.9	APCH CRS 149°	Rwy Ldg 11,758 THRE 163 Arprt Elev 165
---------------------------	-------------------------	--

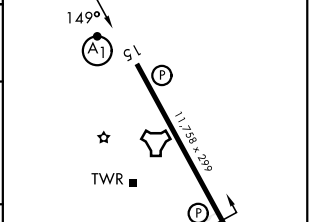
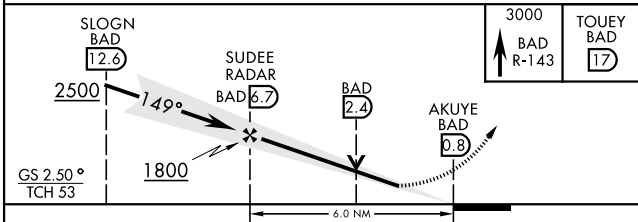
[USAF]

BARKSDALE AFB (KBAD)

RADAR or DME required		ALSF-1 	MISSED APPROACH: Climb to 3000 via BAD R-143 direct TOUQE and hold.		
*When ALS inop, increase RVR to 40 and vis to 3/4 mile. **When ALS inop, increase CAT AB RVR to 55 and vis to 1 mile, CAT CDE vis to 1 3/8 miles. *** Circling not authorized W of Rwy.					
ATIS 307.025	SHREVEPORT APP CON 320°-152° 123.75 360.725 153°-319° 119.9 335.55	TOWER ★ 128.25 278.3	GND CON 121.8 253.5	ASR	



EMERG SAFE ALT 100 NM 3200	ELEV 165	THRE 163
----------------------------	----------	----------



CATEGORY	A	B	C	D	E
S-ILS 15*	365/24		200	(200-1/2)	
S-LOC 15**	640/24	475 (500-1/2)	640/50	475	(500-1)
CIRCLING***	NOT AUTHORIZED		780-2 615 (700-2)	780-2 1/4 615 (700-2 1/4)	

HIRL Rwy 15-33

BOSSIER CITY, LOUISIANA
Amdt 7 25DEC25

32° 30' N-93° 40' W

BARKSDALE AFB (KBAD)

ILS or LOC Z RWY 15

SC-4, 11 JUN 2026 to 09 JUL 2026

SC-4, 11 JUN 2026 to 09 JUL 2026