

BOSSIER CITY, LOUISIANA

TACAN Y RWY 33

TACAN BAD Chan 105	APCH CRS 323°	Rwy Idg THRE 8946 161 Arprt Elev 165
-----------------------	------------------	-----------------------------------------------------

[USAF]

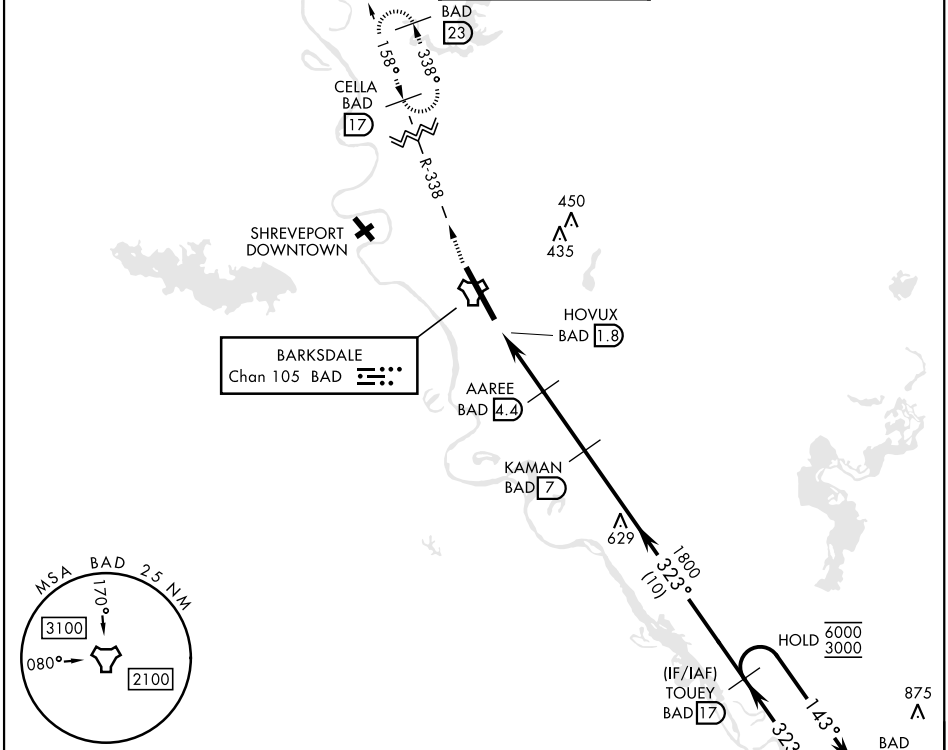
BARKSDALE AFB (KBAD)

* When ALS inop, increase CAT AB RVR to 55 and vis to 1 mile, CAT CDE vis to 1 1/8 miles.
 ** Circling not authorized W of Rwy 13-33.

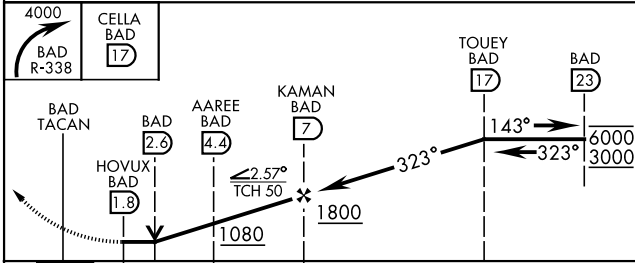


MISSED APPROACH: Climb to 4000 via BAD R-338 direct CELLA and hold.

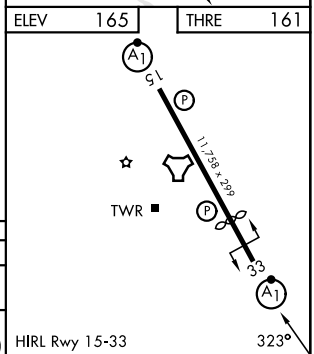
ATIS 307.025	SHREVEPORT APP CON 320°-152° 123.75 360.725 153°-319° 119.9 335.55	TOWER * 128.25 278.3	GND CON 121.8 253.5	ASR
-----------------	--------------------------------------------------------------------------	-------------------------	------------------------	-----



EMERG SAFE ALT 100 NM 3200



CATEGORY	A	B	C	D	E
S-33*	600/24	437 (500-1/2)	600/40	437	(500-3/4)
CIRCLING**	NOT AUTHORIZED		780-2 615 (700-2)	780-2 1/4 615 (700-2 1/4)	



BOSSIER CITY, LOUISIANA
 Amdt 7 25DEC25

32° 30' N-93° 40' W

BARKSDALE AFB (KBAD)

TACAN Y RWY 33

SC-4, 11 JUN 2026 to 09 JUL 2026

SC-4, 11 JUN 2026 to 09 JUL 2026