

VOR/DME Y RWY 33

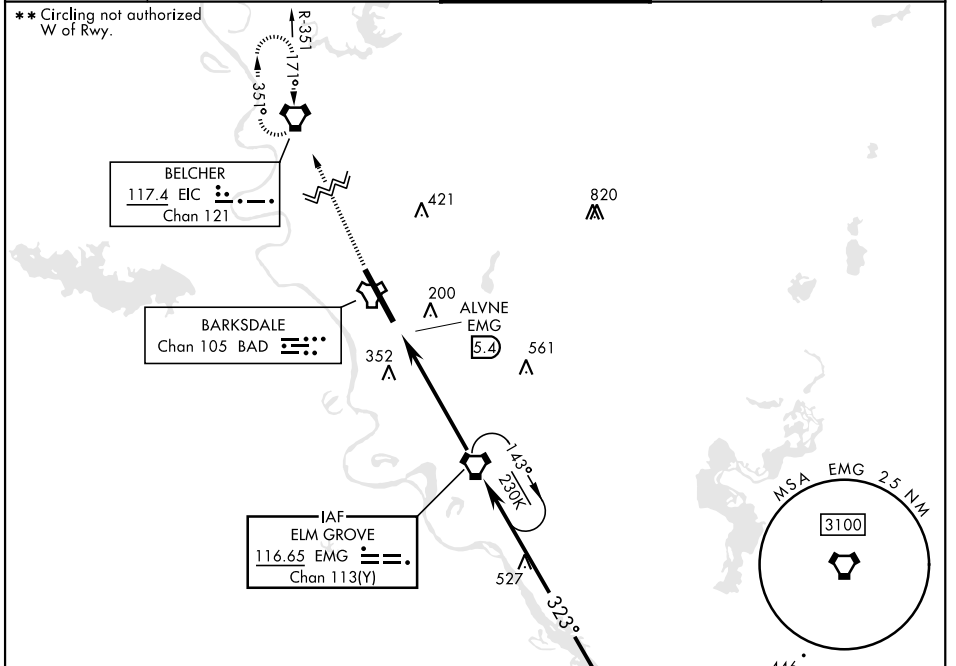
VORTAC EMG 116.65 Chan 113(Y)	APCH CRS 323°	Rwy Idg THRE 161 Arprt Elev 165	[USAF]	BARKSDALE AFB (KBAD)
---	-------------------------	---	--------	----------------------

DME or RADAR required. ALSIF-1
(A1)

* When ALS inop, increase CAT AB RVR to 55 and vis to 1 mile, CAT CDE vis to 1 1/2 miles.

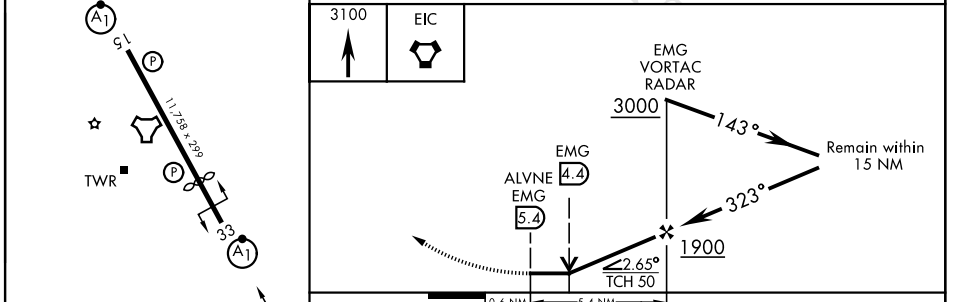
MISSED APPROACH: Climb to 3100 direct EIC VORTAC and hold.

ATIS 307.025	SHREVEPORT APP CON 123.75 360.725 (320°-152°) 119.9 335.55 (153°-319°)	TOWER ★ 128.25 278.3	GND CON 121.8 253.5	ASR
------------------------	--	--------------------------------	-------------------------------	-----



EMERG SAFE ALT 100 NM 3300

ELEV	165	THRE	161
------	-----	------	-----



HIRL Rwy 15-33	3100	EIC	EMG VORTAC RADAR	3000	143°	Remain within 15 NM	323°	1900	098°	278°
FAF to MAP 5.4 NM	0.6 NM	5.4 NM	EMG 4.4	EMG 5.4	≤ 2.65°	TCH 50				
CATEGORY	A	B	C	D	E					
S-VOR 33 *	640/24	479 (500-1/2)	640/50	479 (500-1)						
Knots	60	90	120	150	180					
Min:Sec	5:24	3:36	2:42	2:10	1:48					
CIRCLING **	NOT AUTHORIZED			760-2	780-2 1/4					
				595 (600-2)	615 (700-2 1/4)					

VOR/DME Y RWY 33

SC-4, 11 JUN 2026 to 09 JUL 2026

SC-4, 11 JUN 2026 to 09 JUL 2026