


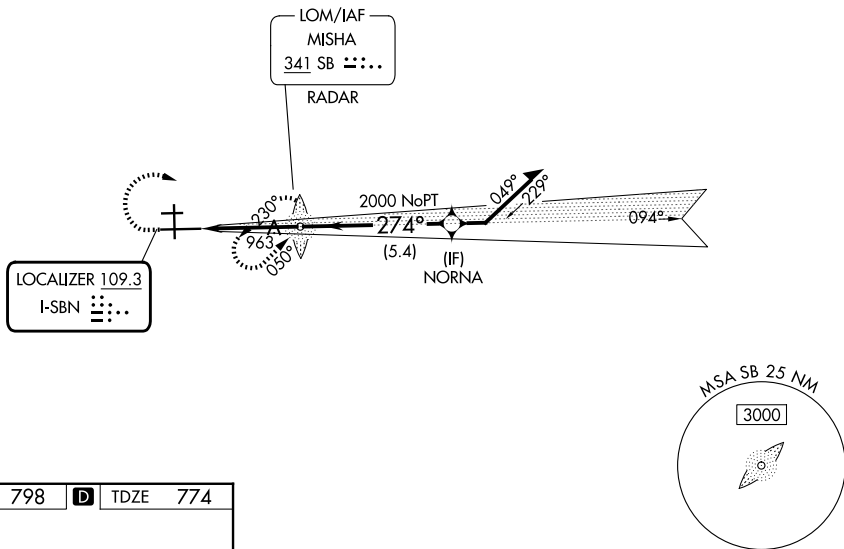
LOC I-SBN 109.3	APP CRS 274°	Rwy Ldg TDZE Apt Elev	8412 774 798
---------------------------	------------------------	-----------------------------	---

ILS or LOC RWY 27L

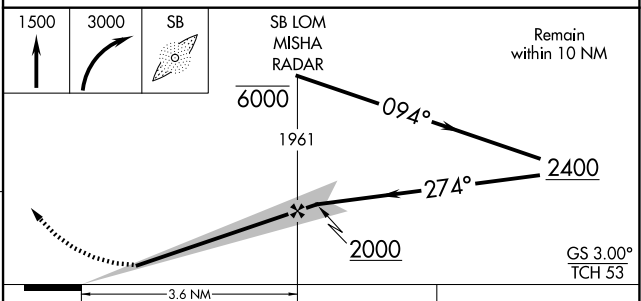
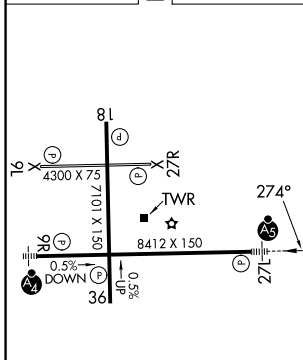
SOUTH BEND INTL (SBN)

RNP APCH - GPS. From NORNA. ADF required.	 MISSED APPROACH: Climb to 1500 then climbing right turn to 3000 direct MISHA LOM/RADAR and hold, continue climb-in-hold to 3000.
▼ Circling Rwy 27R NA at night. ▲ * RVR 1800 authorized with use of FD or AP or HUD to DA.	

ATIS 120.675	SOUTH BEND APP CON★ 118.55 257.8	SOUTH BEND TOWER★ 135.675 (CTAF) 0 257.8	GND CON 121.7
------------------------	--	--	-------------------------



ELEV 798	D	TDZE 774
----------	----------	----------



CATEGORY	A	B	C	D
S-ILS 27L *	974/24 200 (200-½)			
S-LOC 27L	1220/24	446 (500-½)	1220/45	446 (500-¾)
CIRCLING	1280-1	482 (500-1)	1440-1¾ 642 (700-1¾)	1520-2¼ 722 (800-2¼)

EC-2, 11 JUN 2026 to 09 JUL 2026

EC-2, 11 JUN 2026 to 09 JUL 2026