

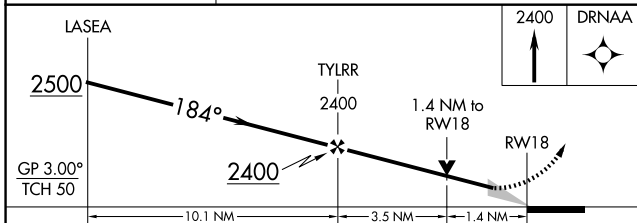
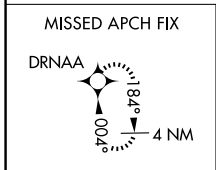
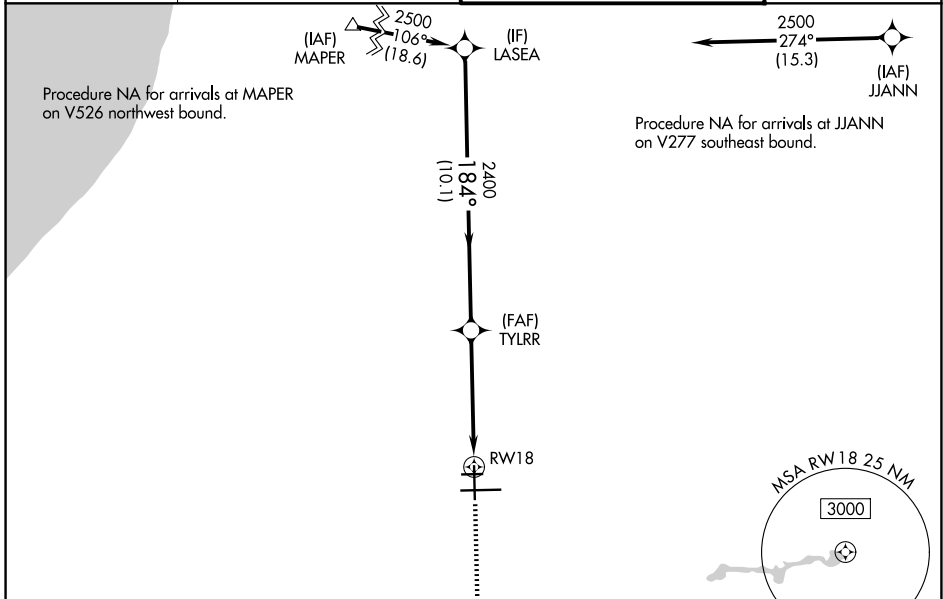
WAAS CH 73021 W18A	APP CRS 184°	Rwy Ldg TDZE Apt Elev	7101 798 798
--	------------------------	-----------------------------	---

RNAV (GPS) RWY 18

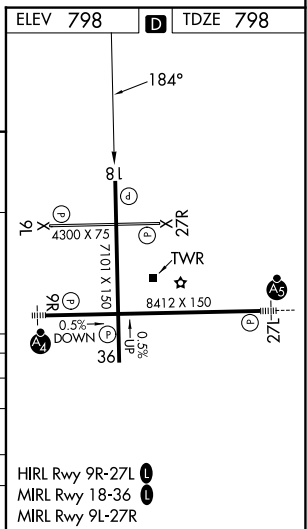
SOUTH BEND INTL (SBN)

RNP APCH - GPS.	MISSED APPROACH: Climb to 2400 direct DRNAA and hold.
<p>For uncompensated Baro-VNAV systems, LNAV/VNAV NA below -20°C or above 54°C. Circling to Rwy 27R NA at night.</p>	

ATIS 120.675	SOUTH BEND APP CON ★ 118.55 257.8	SOUTH BEND TOWER ★ 135.675 (CTAF) 0 257.8	GND CON 121.7
------------------------	---	---	-------------------------



	A	B	C	D
LPV DA		1048-3/4	250 (300-3/4)	
LNAV/VNAV DA		1207-1 1/8	409 (500-1 1/8)	
LNAV MDA	1300-1	502 (600-1)	1300-1 3/8	502 (600-1 3/8)
CIRCLING	1300-1	502 (600-1)	1440-1 3/4	1520-2 1/4
			642 (700-1 3/4)	722 (800-2 1/4)



EC-2, 11 JUN 2026 to 09 JUL 2026

EC-2, 11 JUN 2026 to 09 JUL 2026