

WAAS CH <b>50108</b> <b>W27A</b>	APP CRS <b>274°</b>	Rwy Ldg <b>8412</b> TDZE <b>774</b> Apt Elev <b>798</b>
--	------------------------	---

# RNAV (GPS) RWY 27L

SOUTH BEND INTL (SBN)

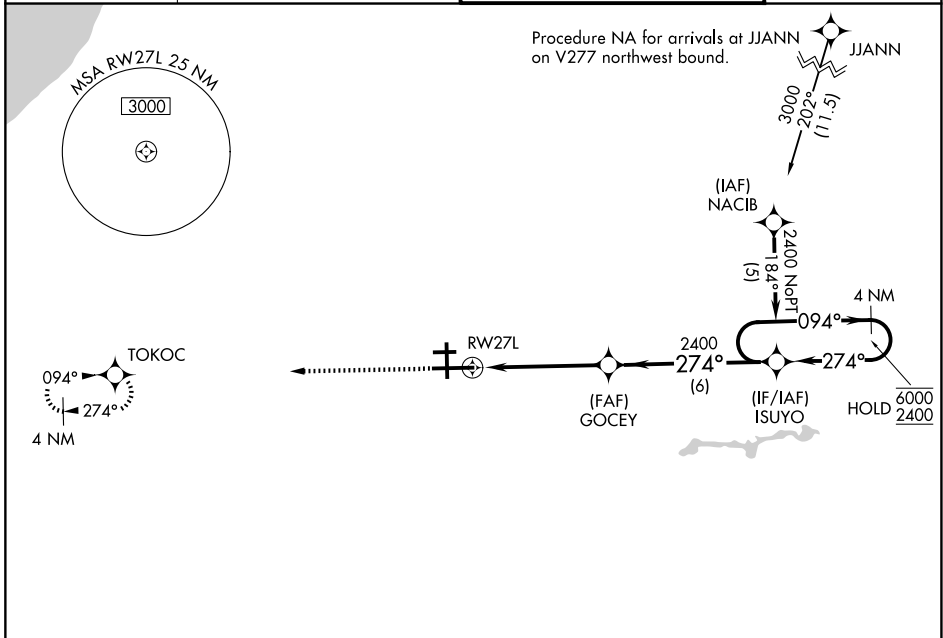
RNP APCH - GPS

**⚠** For uncompensated Baro-VNAV systems, LNAV/VNAV NA below -19°C or above 54°C. Circling to Rwy 27R NA at night. For inop ALS, increase LNAV Cat C/D visibility to 1 1/2 SM.

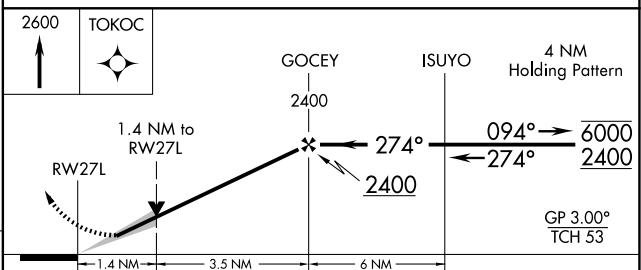
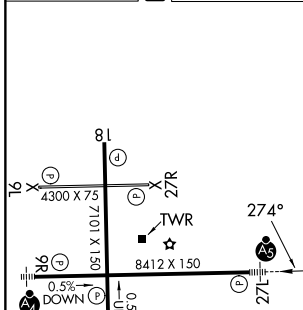


MISSED APPROACH: Climb to 2600 direct TOKOC and hold.

ATIS <b>120.675</b>	SOUTH BEND APP CON★ <b>118.55 257.8</b>	SOUTH BEND TOWER★ <b>135.675 (CTAF) 0 257.8</b>	GND CON <b>121.7</b>
------------------------	--	--	-------------------------



ELEV 798	<b>D</b>	TDZE 774
----------	----------	----------



CATEGORY	A	B	C	D
LPV DA		1030/24	256 (300-1/2)	
LNAV/VNAV DA		1160/40	386 (400-3/4)	
LNAV MDA	1260/24	486 (500-1/2)	1260/50	486 (500-1)
CIRCLING	1280-1	482 (500-1)	1440-1 3/4 642 (700-1 1/4)	1520-2 1/4 722 (800-2 1/4)

HIRL Rwy 9R-27L **Ⓛ**  
MIRL Rwy 18-36 **Ⓛ**  
MIRL Rwy 9L-27R **Ⓛ**

SOUTH BEND, INDIANA  
Orig-E 12JUN25

41°42'N-86°19'W

# RNAV (GPS) RWY 27L

SOUTH BEND INTL (SBN)

EC-2, 11 JUN 2026 to 09 JUL 2026

EC-2, 11 JUN 2026 to 09 JUL 2026