

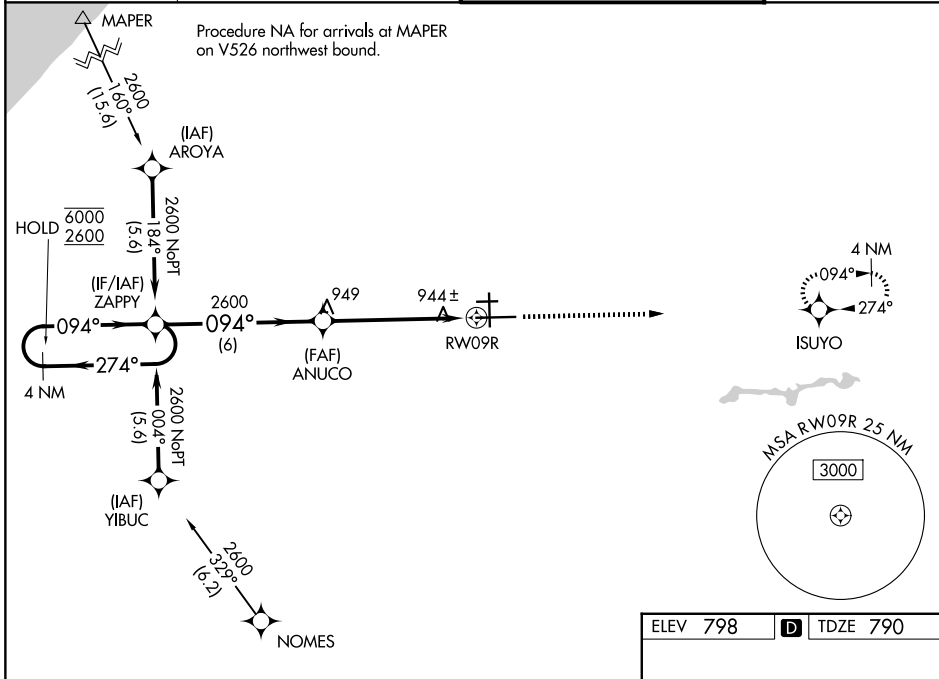
WAAS CH <b>60908</b> <b>W09B</b>	APP CRS <b>094°</b>	Rwy Ldg TDZE Apt Elev	<b>8412</b> <b>790</b> <b>798</b>
--	------------------------	-----------------------------	---

# RNAV (GPS) RWY 9R

SOUTH BEND INTL (SBN)

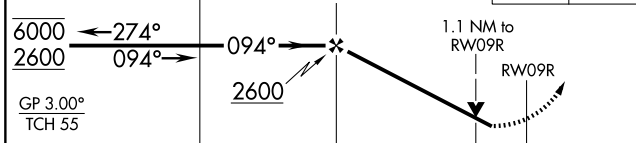
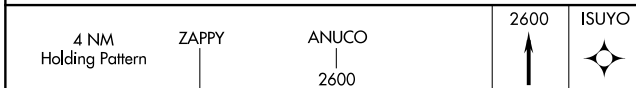
RNP APCH - GPS.	MALSF	MISSED APPROACH: Climb to 2600 direct ISUYO and hold.
<p>▼ For uncompensated Baro-VNAV systems, LNAV/VNAV NA below -1°C or above 54°C. Circling Rwy 27R NA at night. Rwy 9R helicopter visibility reduction below RVR 4000 NA.</p> <p>▲ For inop ALS, increase LPV all Cats visibility to RVR 5500; increase LNAV/VNAV all Cats visibility to RVR 6000; increase LNAV Cat C/D to RVR 6000.</p>		

ATIS <b>120.675</b>	SOUTH BEND APP CON ★ <b>118.55 257.8</b>	SOUTH BEND TOWER ★ <b>135.675 (CTAF) 0 257.8</b>	GND CON <b>121.7</b>
------------------------	---	---	-------------------------



EC-2, 11 JUN 2026 to 09 JUL 2026

EC-2, 11 JUN 2026 to 09 JUL 2026



CATEGORY	A	B	C	D
LPV DA		1135/40	345 (400-3/4)	
LNAV/VNAV DA		1200/50	410 (500-1)	
LNAV MDA	1200/40	410 (500-3/4)	1200/50	410 (500-1)
CIRCLING	1280-1	482 (500-1)	1440-1 3/4 642 (700-1 3/4)	1520-2 1/4 722 (800-2 1/4)

ELEV 798 **D** TDZE 790

MSA R/W09R 25 NM  
3000

HIRL Rwy 9R-27L **1**  
MIRL Rwy 18-36 **1**  
MIRL Rwy 9L-27R **1**