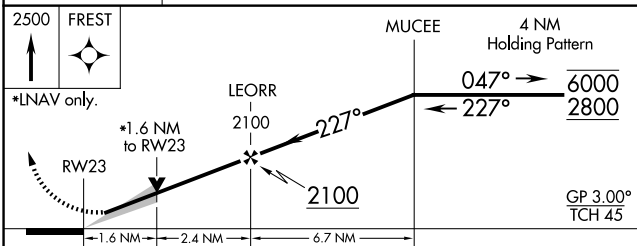
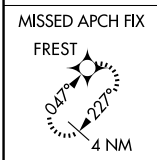
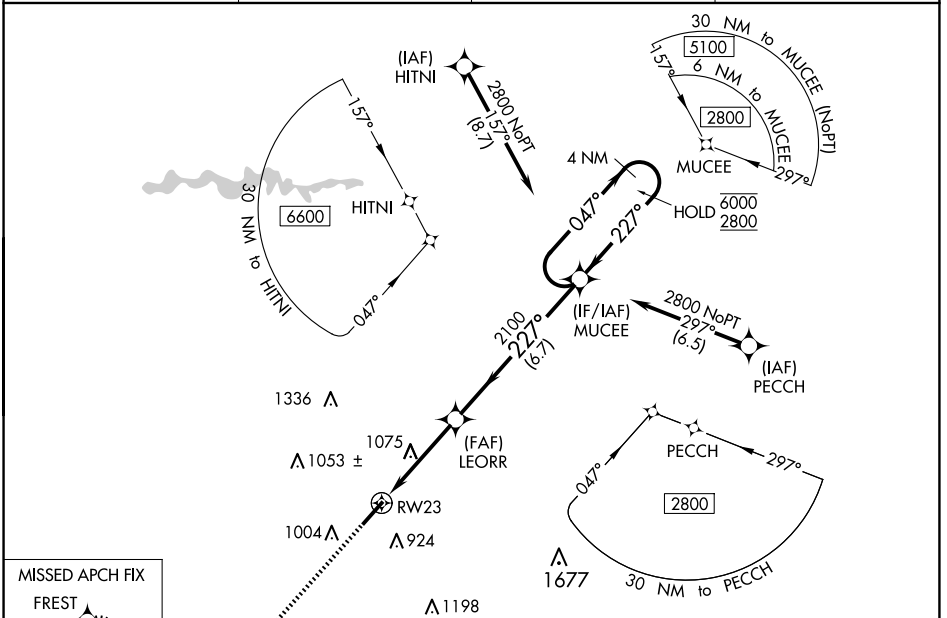


WAAS CH 65926 W23A	APP CRS 227°	Rwy Idg TDZE Apt Elev	5452 801 802
--	------------------------	-----------------------------	---

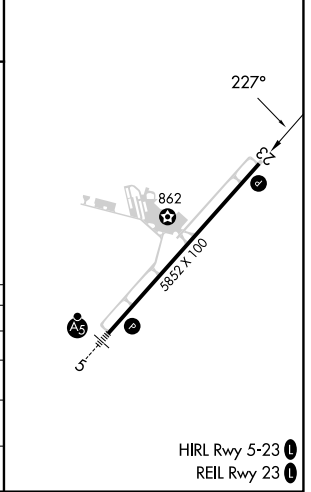
RNAV (GPS) RWY 23

SPARTANBURG DOWNTOWN MEML/SIMPSON FLD (SPA)

RNP APCH.		MISSED APPROACH: Climb to 2500 direct FREST and hold.	
▼ For uncompensated Baro-VNAV systems, LNAV/VNAV NA below -16°C or above 54°C.		AWOS-3 133,925	GREER APP CON * 119.4 350.2
		CLNC DEL 120.55	UNICOM 123.0 (CTAF) 1



ELEV 802	D TDZE 801
----------	-------------------



CATEGORY	A	B	C	D
LPV DA		1001- ³ / ₄	200 (200- ³ / ₄)	
LNAV/VNAV DA		1090- ⁷ / ₈	289 (300- ⁷ / ₈)	
LNAV MDA	1340-1	539 (600-1)	1340-1 ¹ / ₂	539 (600-1 ¹ / ₂)
C CIRCLING	1340-1	538 (600-1)	1380-1 ¹ / ₂ 578 (600-1 ¹ / ₂)	1420-2 618 (700-2)

RNAV (GPS) RWY 23

SE-2, 11 JUN 2026 to 09 JUL 2026

SE-2, 11 JUN 2026 to 09 JUL 2026

HIRL Rwy 5-23 **1**
REIL Rwy 23 **1**