

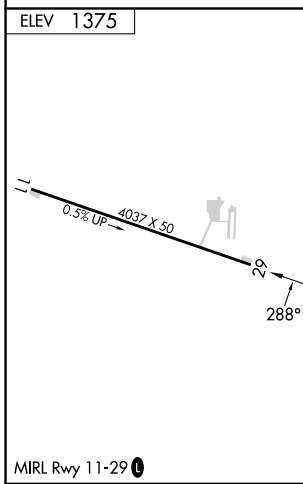
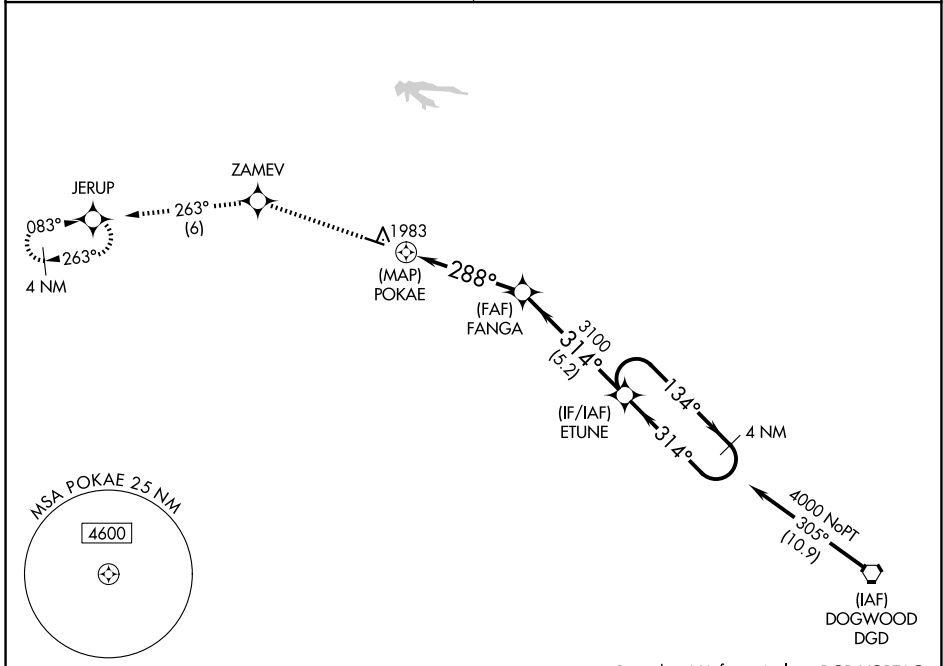
APP CRS 288°	Rwy Ldg TDZE Apt Elev	N/A N/A 1375
------------------------	-----------------------------	---

RNAV (GPS)-B DOWNTOWN (3DW)

NA Circling NA north of Rwy 11-29. DME/DME RNP-0.3 NA. Use Springfield-Branson Nil altimeter setting; when not received, use Branson West altimeter setting and increase all MDA 60 feet. Procedure NA at night. Helicopter visibility reduction below 1 SM NA.

MISSED APPROACH: Climb to 4000 direct ZAMEV and track 263° to JERUP and hold.

SPRINGFIELD APP CON 124.95 353.925	UNICOM 122.8 (CTAF) 0
--	---------------------------------



4000	ZAMEV	tr 263°	JERUP	Visual Segment - Obstacles.	
				FANGA	ETUNE 4 NM Holding Pattern
	POKAE			3100	134° → 4000
				288° ←	← 314°
	0.9 NM	4.4 NM	5.2 NM		
CATEGORY	A	B	C	D	
CIRCLING	2280-1¼ 905 (1000-1¼)		NA		

Procedure NA for arrivals on DGD VORTAC airway radials 232 CW 311.

NC-3, 11 JUN 2026 to 09 JUL 2026

NC-3, 11 JUN 2026 to 09 JUL 2026