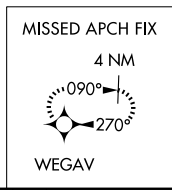
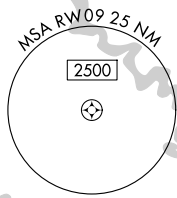
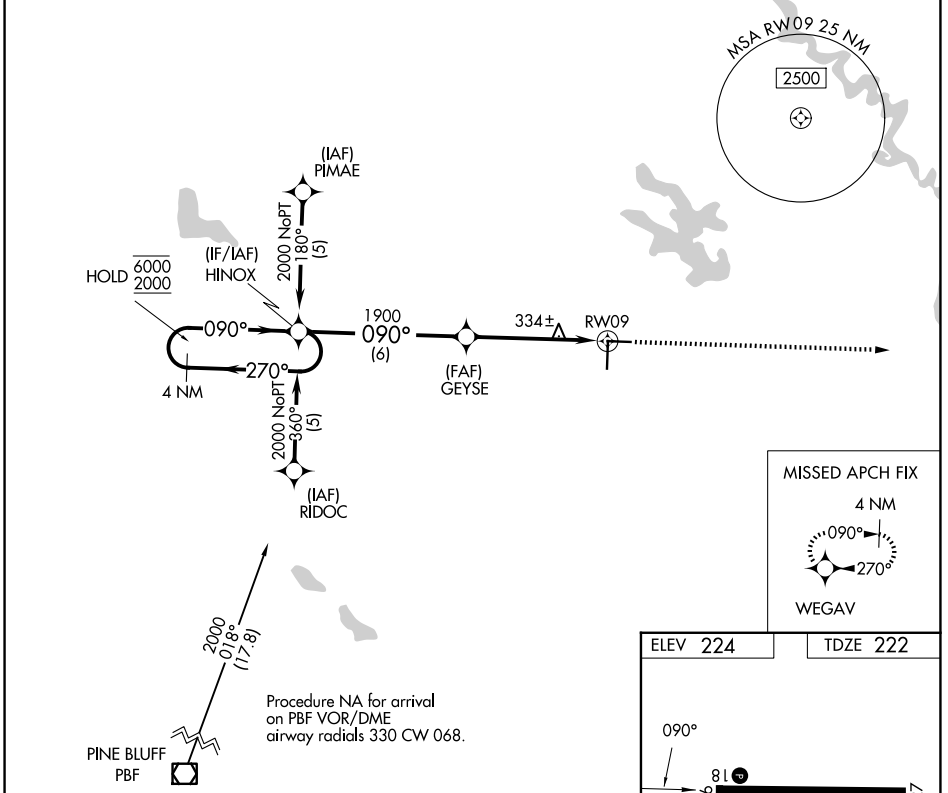


APP CRS	Rwy Ldg	5002
090°	TDZE	222
	Apt Elev	224

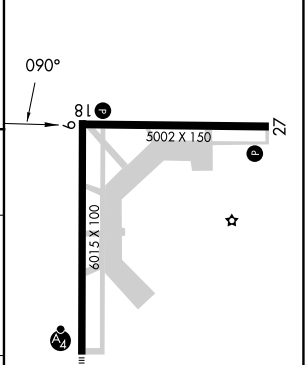
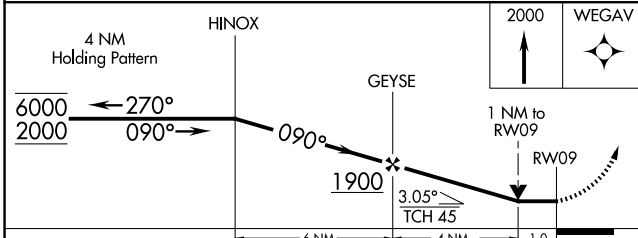
RNAV (GPS) RWY 9

STUTTGART MUNI CARL HUMPHREY FLD (SGT)

RNP APCH - GPS.		MISSED APPROACH: Climb to 2000 direct WEGAV and hold.	
AWOS-3PT	LITTLE ROCK APP CON	CLNC DEL	UNICOM
119.025	135.4 353.6	123.7	122.8 (CTAF) 0



ELEV 224	TDZE 222
----------	----------



CATEGORY	A	B	C	D
LNVA MDA	600-1 378 (400-1)			600-1¼ 378 (400-1¼)
CIRCLING	660-1 436 (500-1)	680-1 456 (500-1)	760-1½ 536 (600-1½)	860-2 636 (700-2)

MIRL Rwy 18-36 and 9-27 0
REIL Rwy 18 and 27 0

SC-1, 11 JUN 2026 to 09 JUL 2026

SC-1, 11 JUN 2026 to 09 JUL 2026