

HI-TACAN Z RWY 4L

TACAN SSC Chan 38	APCH CRS 043°	Rwy Idg TDZE Arprt Elev	4L 10,014 240 241	4R 8014 236 241
----------------------	------------------	-------------------------------	----------------------------	--------------------------

[USAF]

SHAW AFB (KSSC)

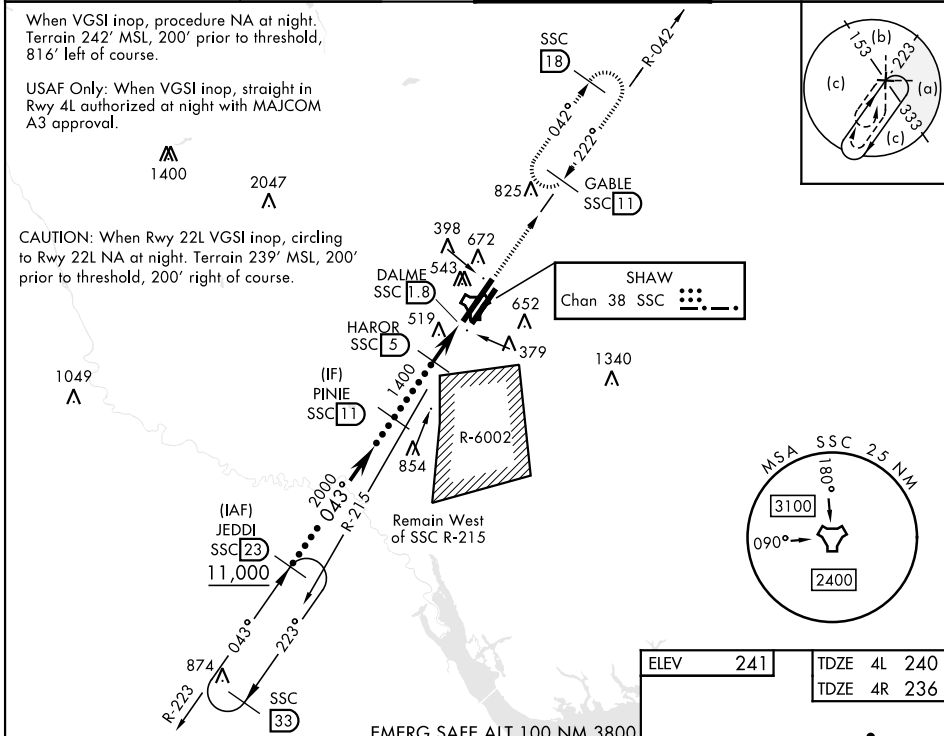
RADAR required when R-6002 active.



MISSED APPROACH: Climbing to 2000, intercept SSC TACAN R-042 to GABLE and hold.

▼ * When ALS inop, increase vis to 1½ miles.

ATIS★ 132.125 270.1	APP CON★ 125.4 318.1	TOWER★ 126.65 254.25	GND CON 126.1 275.8
------------------------	-------------------------	-------------------------	------------------------

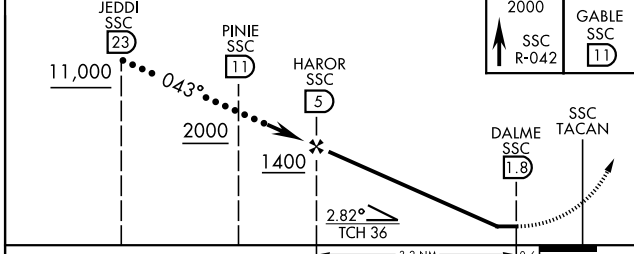


When VGSI inop, procedure NA at night. Terrain 242' MSL, 200' prior to threshold, 816' left of course.

USAF Only: When VGSI inop, straight in Rwy 4L authorized at night with MAJCOM A3 approval.

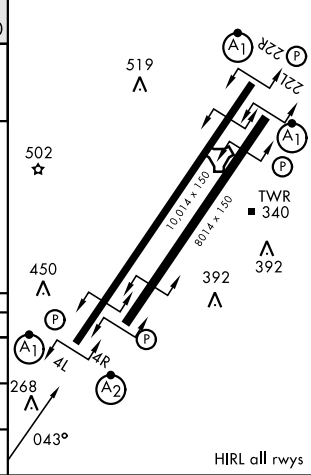
CAUTION: When Rwy 22L VGSI inop, circling to Rwy 22L NA at night. Terrain 239' MSL, 200' prior to threshold, 200' right of course.

EMERG SAFE ALT 100 NM 3800



CATEGORY	C	D	E
S-4L*	800/60	560 (600-1½)	
SIDESTEP 4R*	800-1½	564 (600-1½)	
CIRCLING	1000-2¼ 759 (800-2¼)	1000-2½ 759 (800-2½)	1000-2¾ 759 (800-2¾)

ELEV 241	TDZE 4L 240	TDZE 4R 236
----------	-------------	-------------



HI-TACAN Z RWY 4L

SE-2, 11 JUN 2026 to 09 JUL 2026

SE-2, 11 JUN 2026 to 09 JUL 2026