

SUMTER, SOUTH CAROLINA

ILS or LOC Y RWY 22R


LOC I-JWU 108.7	APCH CRS 223°	Rwy Ldg 22R 10,014	22L 8014
		TDZE 240	235
		Arprt Elev 241	241

[USAF]

SHAW AFB (KSSC)

RADAR or DME required

▲* When ALS inop, increase RVR to 40 and vis to ¾ mile.
 ▲** When ALS inop, increase CAT AB RVR to 55 and vis to 1 mile, CAT CDE vis to 1¼ miles.

ALSF-1


MISSED APPROACH: Climbing to 2000, intercept SSC TACAN R-223 to PINIE and hold.

ATIS★ 132.125 270.1	APP CON★ 125.4 318.1	TOWER★ 126.65 254.25	GND CON 126.1 275.8
-------------------------------	--------------------------------	--------------------------------	-------------------------------

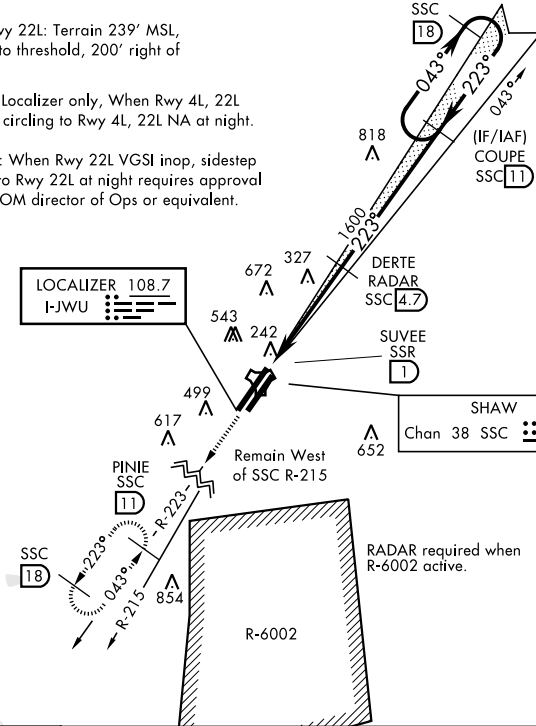
Sidestep Rwy 22L: Terrain 239' MSL, 200' prior to threshold, 200' right of course.

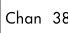
CAUTION: Localizer only, When Rwy 4L, 22L VGSi inop, circling to Rwy 4L, 22L NA at night.

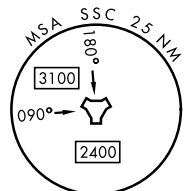
USAF Only: When Rwy 22L VGSi inop, sidestep or circling to Rwy 22L at night requires approval from MAJCOM director of Ops or equivalent.

▲ 1573

LOCALIZER 108.7
 I-JWU

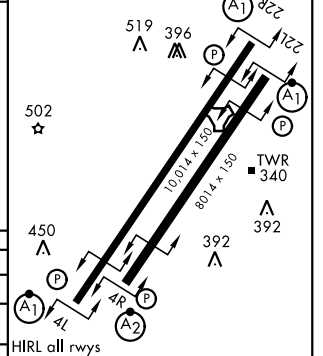
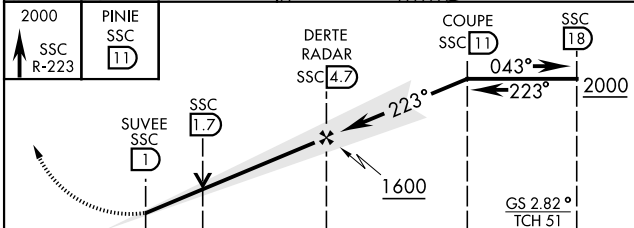



SHAW
 Chan 38 SSC




EMERG SAFE ALT 100 NM 3800

ELEV 241	TDZE 22R 240
	TDZE 22L 235



	0.6 NM	3.7 NM			
CATEGORY	A	B	C	D	E
S-ILS 22R*	440/24		200	(200-½)	
S-LOC 22R**	660/24	420 (500-½)	660/40	420 (500-¾)	
SIDESTEP ** 22L	660-1	425 (500-1)	660-1¼	425 (500-1¼)	
CIRCLING	820-1 579 (600-1)	880-1 639 (700-1)	1000-2¼ 759 (800-2¼)	1000-2½ 759 (800-2½)	1000-2¾ 759 (800-2¾)

HIRL all rwys					
FAF to MAP 3.7 NM					
Knots	60	90	120	150	180
Min:Sec	3:42	2:28	1:51	1:29	1:14

SUMTER, SOUTH CAROLINA
 Amdt 1 10OCT19

33° 58' N-80° 28' W

SHAW AFB (KSSC)

ILS or LOC Y RWY 22R

SE-2, 11 JUN 2026 to 09 JUL 2026

SE-2, 11 JUN 2026 to 09 JUL 2026