

SUMTER, SOUTH CAROLINA

# ILS or LOC Y RWY 4L

LOC I-SSC <b>110.1</b>	APCH CRS <b>043°</b>	Rwy Idg TDZE Arprt Elev	4L <b>10,014</b> <b>240</b> <b>241</b>	4R <b>8014</b> <b>236</b> <b>241</b>
---------------------------	-------------------------	-------------------------------	---	---

[USAF]

SHAW AFB (KSSC)

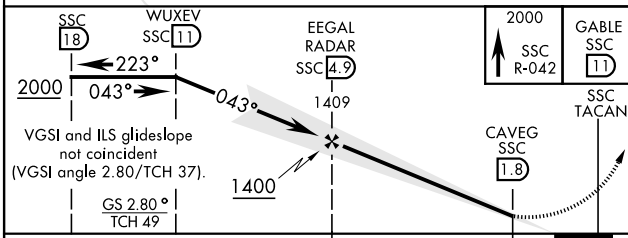
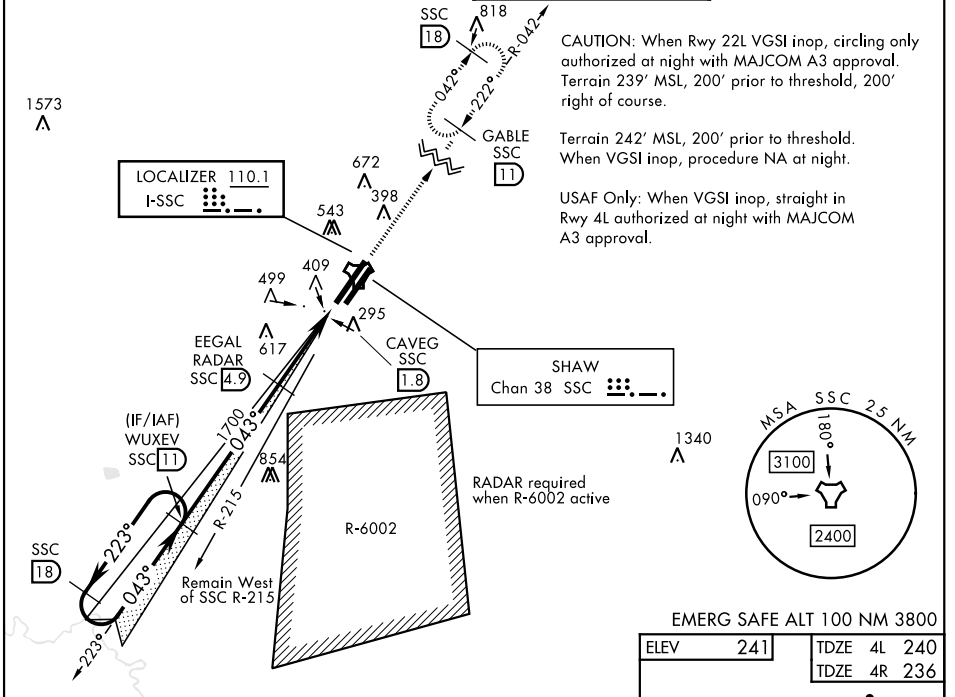
RADAR or DME required

▼ \* When ALS inop, increase CAT AB RVR to 55 and vis to 1 mile, CAT CDE vis to 1½ miles.

ALSF-1  
(A1)

MISSED APPROACH: Climbing to 2000, intercept SSC TACAN R-042 to GABLE and hold.

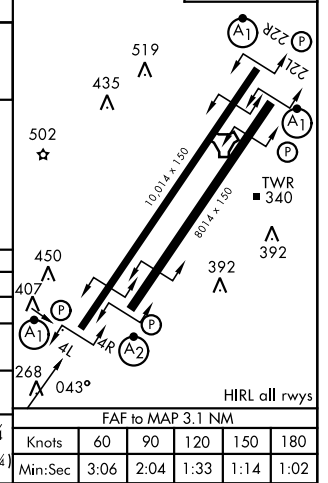
ATIS★ <b>132.125 270.1</b>	APP CON★ <b>125.4 318.1</b>	TOWER★ <b>126.65 254.25</b>	GND CON <b>126.1 275.8</b>
-------------------------------	--------------------------------	--------------------------------	-------------------------------



EMERG SAFE ALT 100 NM 3800

ELEV 241	TDZE 4L 240
	TDZE 4R 236

CATEGORY	A	B	C	D	E
S-ILS 4L		490/50	250	(300-1)	
S-LOC 4L*	780/50	540 (600-1)	780/55	540 (600-1)	
SIDESTEP 4R*	780/50	544 (600-¾)	780-1¾	544 (600-1¾)	
CIRCLING	820-1	880-1	1000-2¼	1000-2½	1000-2¾
	579 (600-1)	639 (700-1)	759 (800-2¼)	759 (800-2½)	759 (800-2¾)



SUMTER, SOUTH CAROLINA

33° 58' N-80° 28' W

SHAW AFB (KSSC)

Amdt 1 10OCT19

# ILS or LOC Y RWY 4L

SE-2, 11 JUN 2026 to 09 JUL 2026

SE-2, 11 JUN 2026 to 09 JUL 2026