

PINIE FOUR DEPARTURE (PINIE4.PINIE)

SHAW AFB (KSSC)
SUMTER, SOUTH CAROLINA

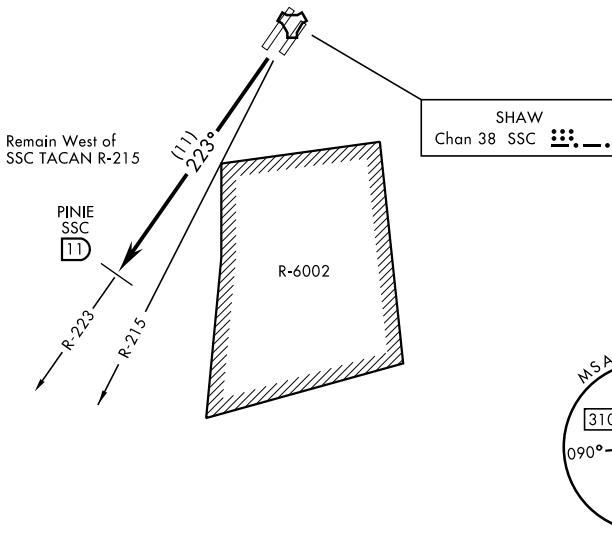
[USAF]

RADAR required when R-6002 active

ATIS ★ 132.125 270.1
TOWER ★
126.65 254.25
DEP CON ★
125.4 318.1
JACKSONVILLE CENTER
124.7 298.9

RWY 22L, Radio-tower 5137' from DER, 1701' left of centerline, 140' AGL/369' MSL.
RWY 22L, F16 tail 46' from DER, 224' right of centerline, 16' AGL/249' MSL.
RWY 22L, Terrain 0' inward of DER, 500' right of centerline, 236' MSL.
RWY 22L, GS-rwy 04L 563' from DER, 500' right of centerline, 40' AGL/273' MSL.

1573
A



SE-2, 11 JUN 2026 to 09 JUL 2026

SE-2, 11 JUN 2026 to 09 JUL 2026

EMERG SAFE ALT 100 NM 3800



DEPARTURE ROUTE DESCRIPTION

TAKEOFF RWY 22L/R: Climbing to 2000, intercept SSC TACAN R-223 until SSC 11 DME, then as directed by ATC.