

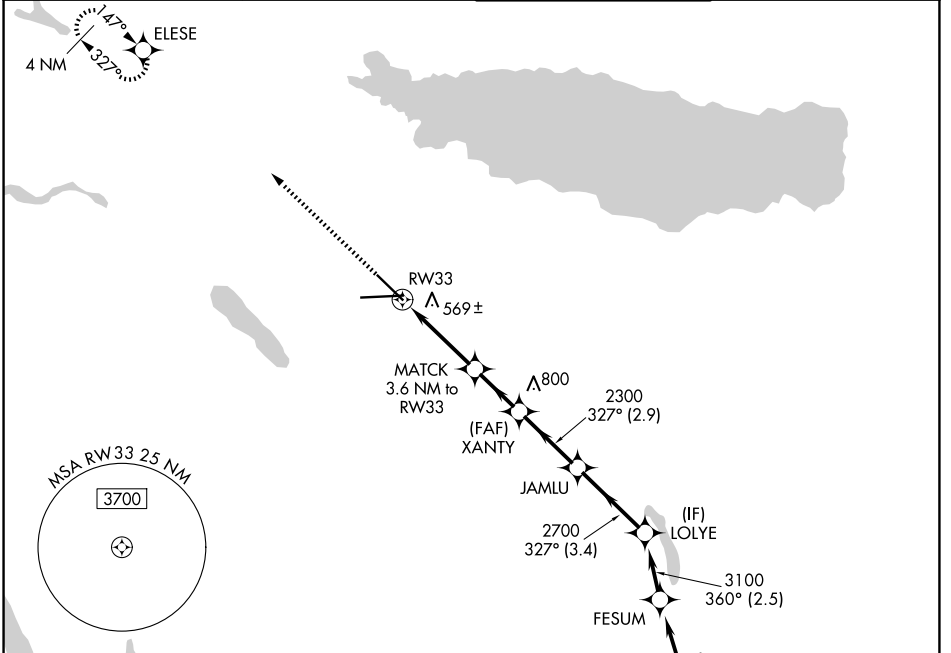
WAAS CH 81823 W33A	APP CRS 327°	Rwy Ldg TDZE Apt Elev	7499 409 421
--	------------------------	-----------------------------	---

RNAV (GPS) RWY 33

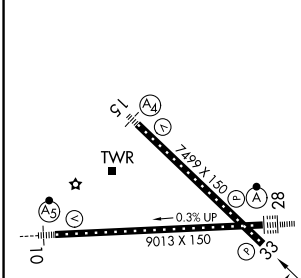
SYRACUSE HANCOCK INTL (SYR)

RNP APCH.	MISSED APPROACH: Climb to 3000 direct ELESE and hold.
<p>▼ Rwy 33 helicopter visibility reduction below ¾ SM NA. For uncompensated</p> <p>▲ Baro-VNAV systems, LNAV/VNAV NA below -20°C or above 54°C.</p>	

ATIS 124.225	SYRACUSE APP CON 126.125 269.125	SYRACUSE TOWER 120.3 239.0	GND CON 121.7 348.6
------------------------	--	--------------------------------------	-------------------------------



ELEV 421	D	TDZE 409
----------	----------	----------



TDZ/CL Rwy 28	HIRL Rwys 10-28 and 15-33		
CATEGORY	A	B	C
LPV DA	715/45		306 (300-¾)
LNAV/VNAV DA	882-1⅜		473 (500-1⅜)
LNAV MDA	820/55	411 (400-1)	820/60 411 (400-1¼)
CIRCLING	900-1 479 (500-1)	920-1 499 (500-1)	1020-1½ 599 (600-1½) 1180-2½ 759 (800-2½)

3000	ELESE				
*LNAV only	*1.1 NM to RW33	XANTY 2300	JAMLU 2700	LOLYE 3100	GP 3.00° TCH 50
	1.1 NM	2.5 NM	2.2 NM	2.9 NM	3.4 NM

NE-2, 11 JUN 2026 to 09 JUL 2026

NE-2, 11 JUN 2026 to 09 JUL 2026