

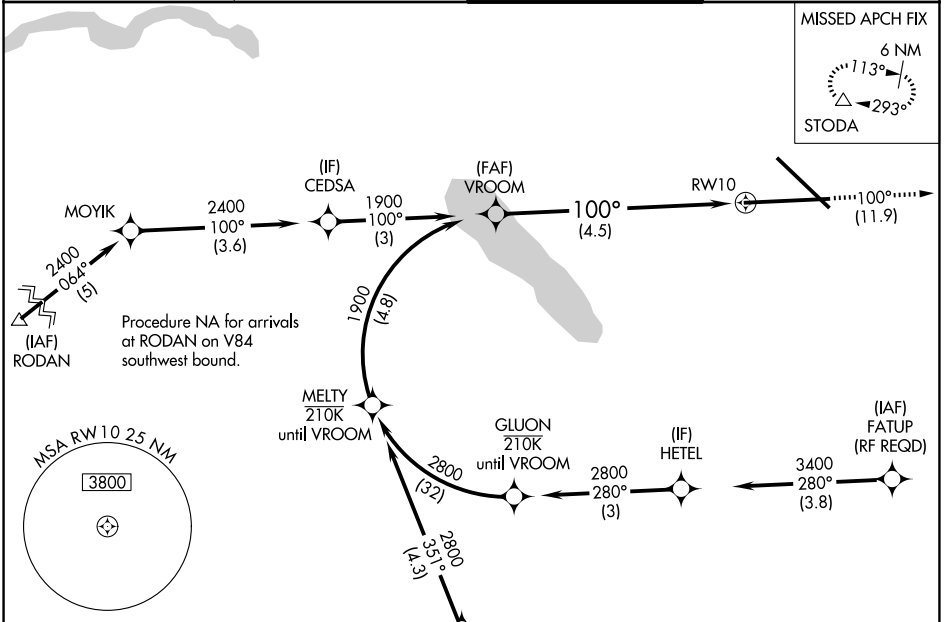
APP CRS 100°	Rwy Ldg TDZE Apt Elev	9013 421 421
------------------------	-----------------------------	---

RNAV (RNP) Y RWY 10

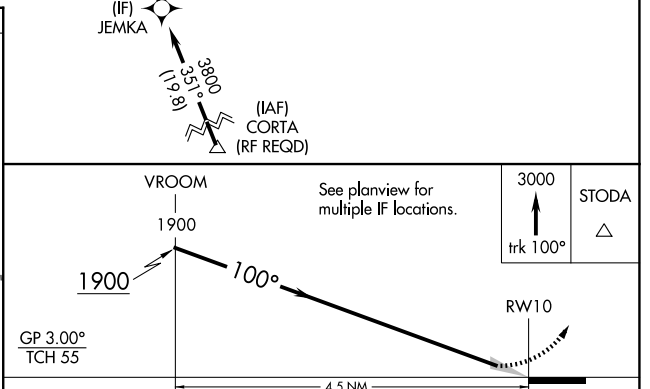
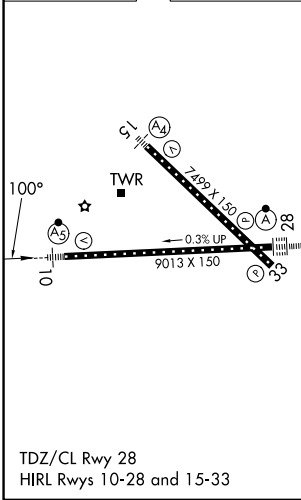
SYRACUSE HANCOCK INTL (SYR)

RNP AR APCH.	MALS R	MISSED APPROACH: Climb to 3000 on track 100° to STODA and hold.
<p>▼ For uncompensated Baro-VNAV systems, procedure NA below -18°C or above 54°C. For inop ALS, increase RNP 0.15 all Cats visibility to 1½. For inop ALS, increase RNP 0.30 all Cats visibility to 1¾.</p>		

ATIS 124.225	SYRACUSE APP CON 126.125 269.125	SYRACUSE TOWER 120.3 239.0	GND CON 121.7 348.6
------------------------	--	--------------------------------------	-------------------------------



ELEV 421	D	TDZE 421
----------	----------	----------



CATEGORY	A	B	C	D
RNP 0.15 DA		816/45	395 (400-¾)	
RNP 0.30 DA		881/55	460 (500-1)	

AUTHORIZATION REQUIRED

NE-2, 11 JUN 2026 to 09 JUL 2026

NE-2, 11 JUN 2026 to 09 JUL 2026