

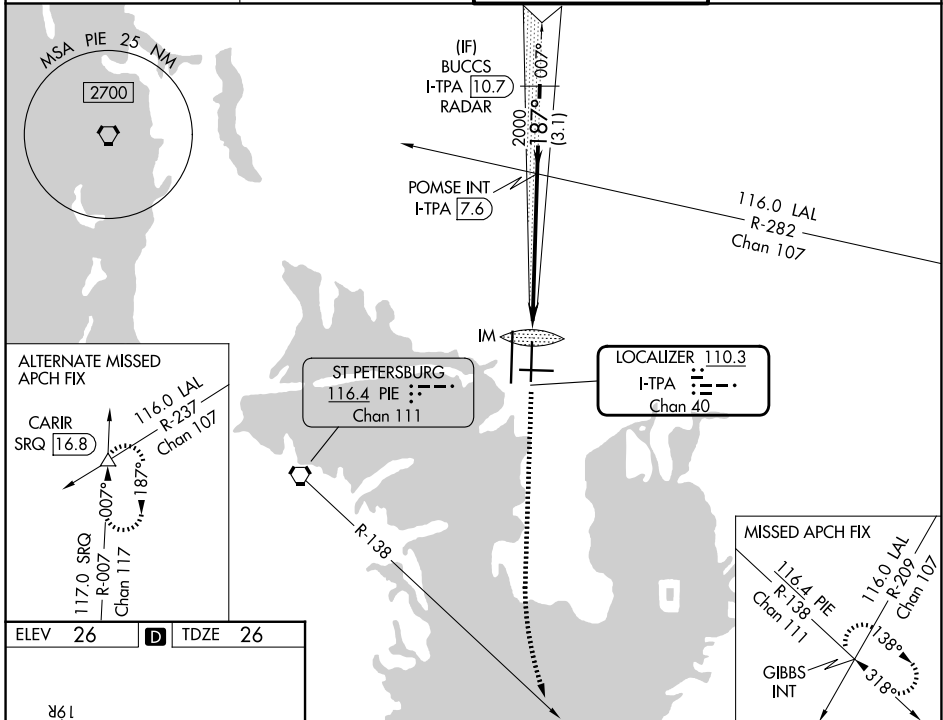
LOC/DME I-TPA 110.3 Chan 40	APP CRS 187°	Rwy Ldg 8300 TDZE 26 Apt Elev 26
--	------------------------	---

ILS RWY 19L (CAT II)

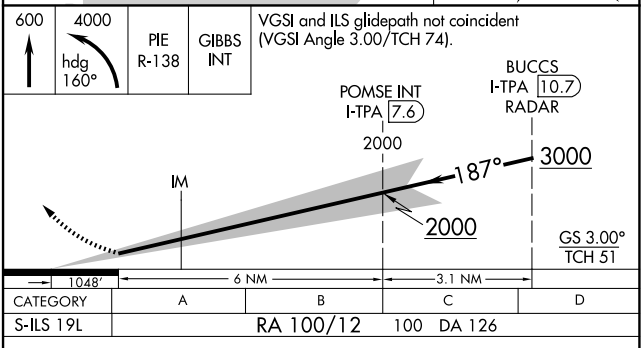
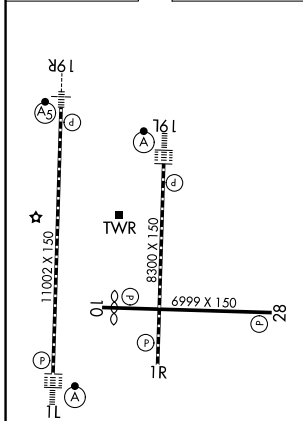
TAMPA INTL (TPA)

RADAR required for procedure entry.		ALSF-2 	MISSED APPROACH: Climb to 600 then climbing left turn to 4000 on heading 160° and on PIE VORTAC R-138 to GIBBS INT and hold.
<p> Simultaneous approach authorized.</p> <p> RVR 1000 authorized with specific OPSPEC, MSPEC, or LOA approval and use of autoland or HUD to touchdown.</p>			

D-ATIS 126.45	TAMPA APP CON 118.5 307.175	TAMPA TOWER 119.5 269.4	GND CON 121.7 269.4
-------------------------	---------------------------------------	-----------------------------------	-------------------------------



ELEV 26	D	TDZE 26
---------	----------	---------



CATEGORY II ILS - SPECIAL AIRCREW & AIRCRAFT CERTIFICATION REQUIRED

REIL Rwy 1R
HIRL Rwy 1L-19R, 1R-19L, and 10-28
TDZL/RCLS Rwy 1L and 19L

SE-3, 11 JUN 2026 to 09 JUL 2026

SE-3, 11 JUN 2026 to 09 JUL 2026