

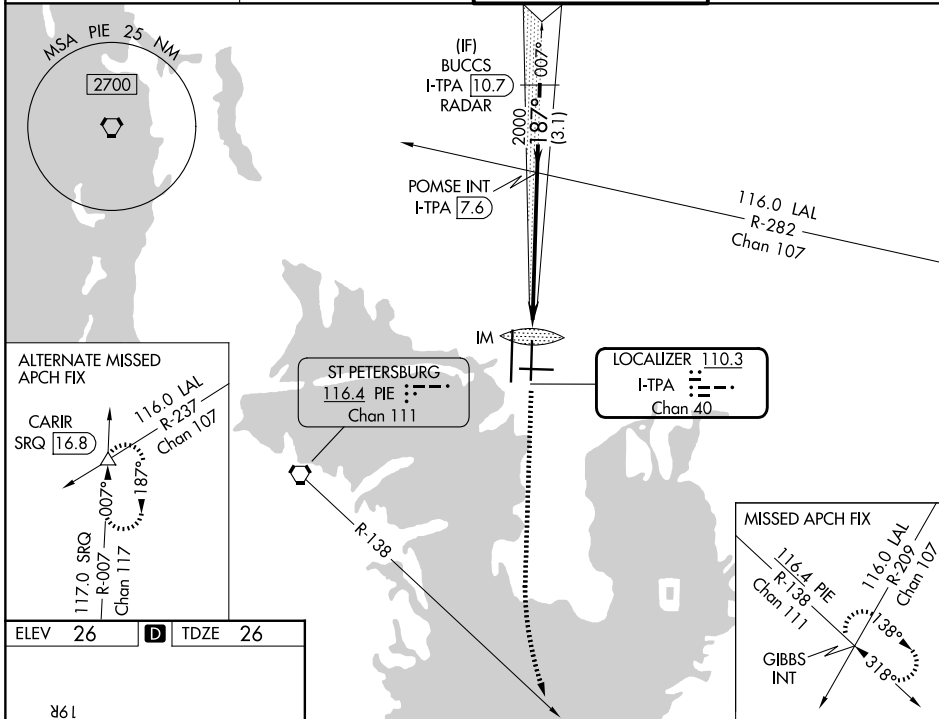
LOC/DME I-TPA <b>110.3</b> Chan <b>40</b>	APP CRS <b>187°</b>	Rwy Ldg <b>8300</b> TDZE <b>26</b> Apt Elev <b>26</b>
---	------------------------	---

# ILS RWY 19L (SA CAT I)

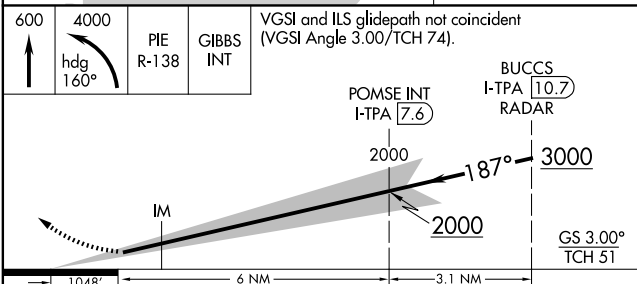
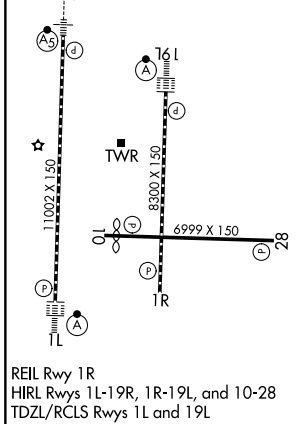
TAMPA INTL (TPA)

RADAR required for procedure entry.		ALSF-2 	MISSED APPROACH: Climb to 600 then climbing left turn to 4000 on heading 160° and on PIE VORTAC R-138 to GIBBS INT and hold.
	Simultaneous approach authorized.		
	Requires specific OPSPEC, MSPEC, or LOA approval.		

D-ATIS <b>126.45</b>	TAMPA APP CON <b>118.5 307.175</b>	TAMPA TOWER <b>119.5 269.4</b>	GND CON <b>121.7 269.4</b>
-------------------------	---------------------------------------	-----------------------------------	-------------------------------



ELEV 26	<b>D</b>	TDZE 26
---------	----------	---------



CATEGORY	A	B	C	D
S-ILS 19L	RA 150/14	150	DA 176	

**SA CATEGORY I ILS- SPECIAL AIRCREW & AIRCRAFT CERTIFICATION REQUIRED**

SE-3, 11 JUN 2026 to 09 JUL 2026

SE-3, 11 JUN 2026 to 09 JUL 2026