

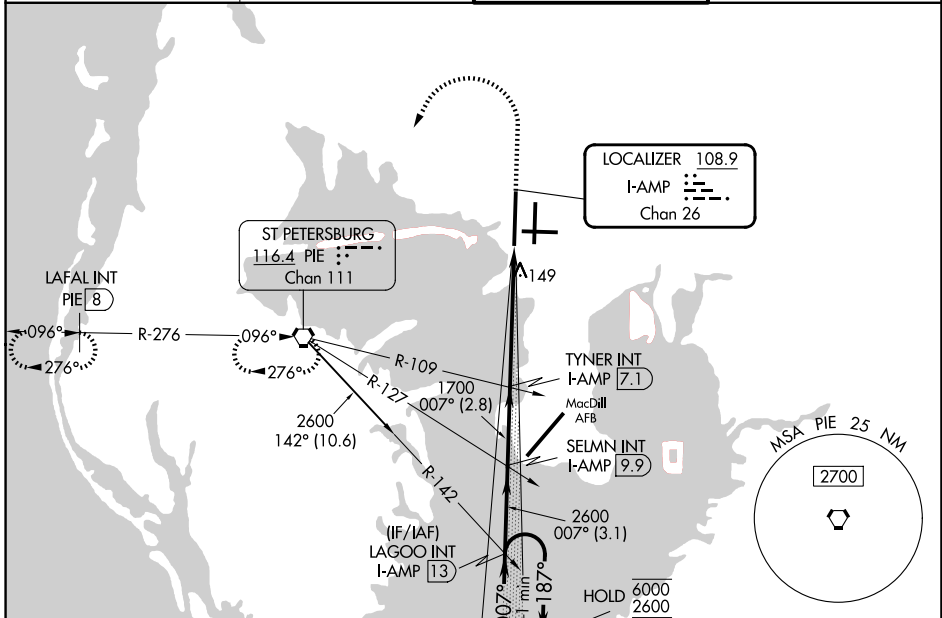
LOC/DME I-AMP <b>108.9</b> Chan <b>26</b>	APP CRS <b>007°</b>	Rwy Ldg <b>10800</b> TDZE <b>11</b> Apt Elev <b>26</b>
---	------------------------	--

# ILS RWY 1L (SA CAT I)

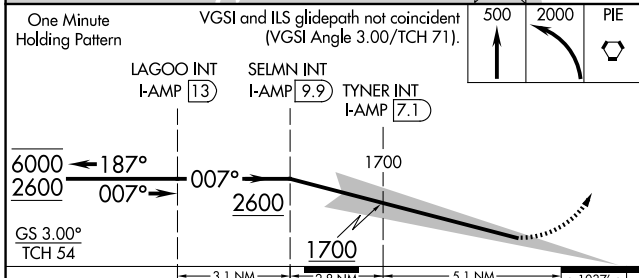
TAMPA INTL (TPA)

DME and RADAR required.	ALSF-2 	MISSED APPROACH: Climb to 500 then climbing left turn to 2000 direct PIE VORTAC and hold, continue climb-in-hold to 2000. (TACAN aircraft climb to 500 then climbing left turn to 2000 direct PIE VORTAC then on PIE VORTAC R-276 to LAFAL INT/PIE 8 DME and hold W, RT, 096° inbound).
-------------------------	------------	---

D-ATIS <b>126.45</b>	TAMPA APP CON <b>118.5 307.175</b>	TAMPA TOWER <b>119.5 269.4</b>	GND CON <b>121.7 269.4</b>
-------------------------	---------------------------------------	-----------------------------------	-------------------------------



ELEV 26	TDZE 11
---------	---------



CATEGORY	A	B	C	D
S-ILS 1L	RA 155/14 150 DA 161			

