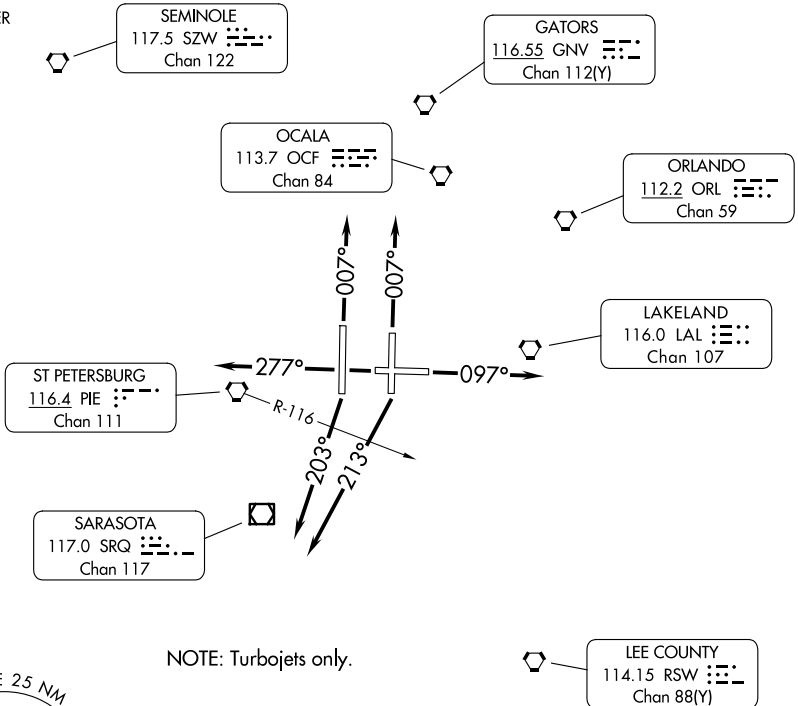


LGTNG FIVE DEPARTURE

TAMPA DEP CON
118.8 239.3
D-ATIS DEP
128.475
CLINC DEL
133.6
GND CON
121.7 269.4
TAMPA TOWER
119.5 269.4

RADAR required.

**TOP ALTITUDE:
6000**



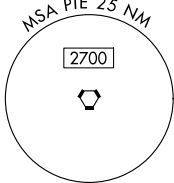
NOTE: Turbojets only.

TAKEOFF MINIMUMS

Rwys 1L/R, 19R, 28: Standard.

Rwy 10: Standard with minimum climb of 245'/NM to 900.

Rwy 19L: 300-1½ or standard with minimum climb of 225'/NM to 300, or alternatively, with standard takeoff minimums and a normal 200'/NM climb gradient, takeoff must occur no later than 1600' prior to departure end of runway.



NOTE: Chart not to scale.

DEPARTURE ROUTE DESCRIPTION

TAKEOFF RUNWAYS 1L/R: Climb on heading 007°, thence. . .

TAKEOFF RUNWAY 10: Climb on heading 097°, thence. . .

TAKEOFF RUNWAY 19L: Climb on heading 213°, thence. . .

TAKEOFF RUNWAY 19R: Climb on heading 203°, thence. . .

TAKEOFF RUNWAY 28: Climb on heading 277°, thence. . .

. . . expect RADAR vectors to join filed/assigned route. Maintain 6000, expect filed altitude 10 minutes after departure.

SE-3, 11 JUN 2026 to 09 JUL 2026

SE-3, 11 JUN 2026 to 09 JUL 2026