

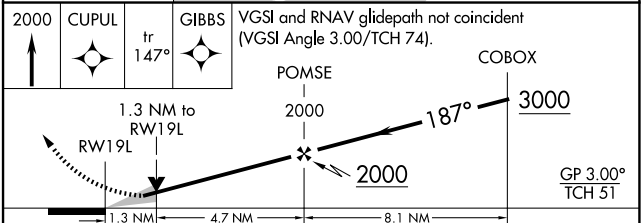
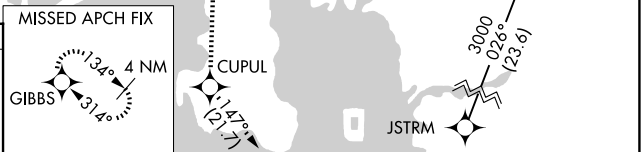
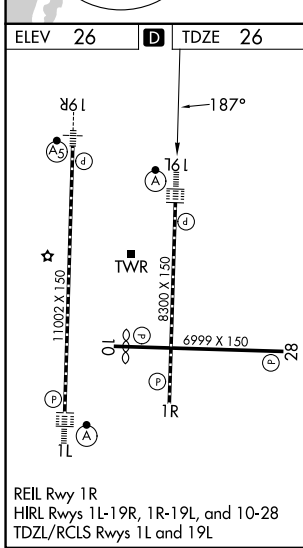
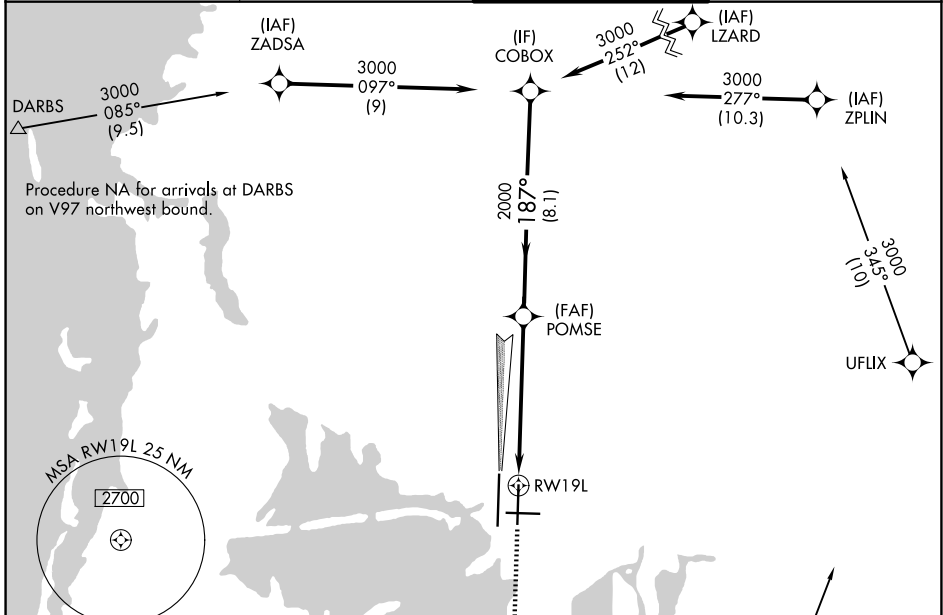
WAAS CH 49100 W 19A	APP CRS 187°	Rwy Ldg TDZE 26 Apt Elev 26	8300
---	------------------------	---	-------------

RNAV (GPS) RWY 19L

TAMPA INTL (TPA)

RNP APCH - GPS		ALSF-2	MISSED APPROACH: Climb to 2000 direct CUPUL and on track 147° to GIBBS and hold.
⚠ LNAV procedure NA during simultaneous operations. For uncompensated Baro-VNAV systems, LNAV/VNAV NA below 4°C or above 54°C. Simultaneous approach authorized. ⚠ Use of FD or AP required during simultaneous operations. For inop ALS, increase LNAV/VNAV visibility all Cats to RVR 6000, and LNAV visibility Cat C/D to 1 $\frac{1}{2}$ SM.			

D-ATIS 126.45	TAMPA APP CON 118.5 307.175	TAMPA TOWER 119.5 269.4	GND CON 121.7 269.4
-------------------------	---------------------------------------	-----------------------------------	-------------------------------



CATEGORY	A	B	C	D
LPV DA	226/18		200 (200- $\frac{1}{2}$)	
LNAV/VNAV DA	440/40		414 (500- $\frac{3}{4}$)	
LNAV MDA	520/24	494 (500- $\frac{1}{2}$)	520/50	494 (500-1)
CIRCLING	600-1	574 (600-1)	680- $1\frac{3}{4}$ 654 (700- $1\frac{3}{4}$)	980-3 954 (1000-3)

SE-3, 11 JUN 2026 to 09 JUL 2026

SE-3, 11 JUN 2026 to 09 JUL 2026