

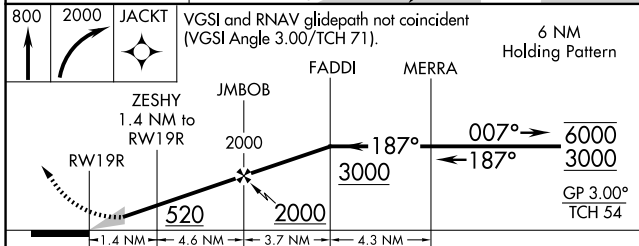
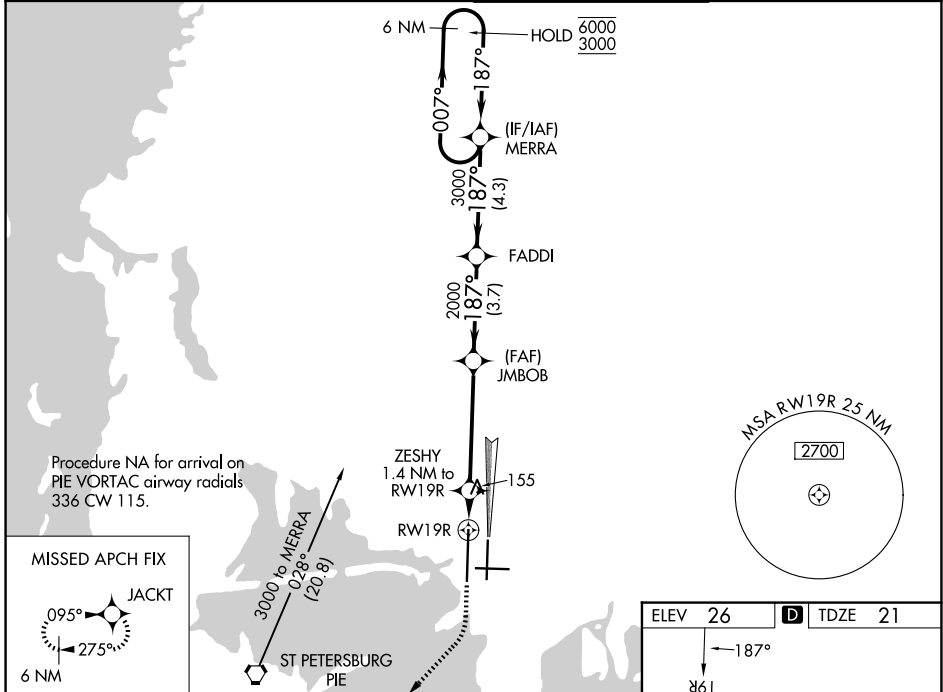
WAAS CH 40406 W19B	APP CRS 187°	Rwy Ldg 11002 TDZE 21 Apt Elev 26
--	------------------------	--

RNAV (GPS) RWY 19R

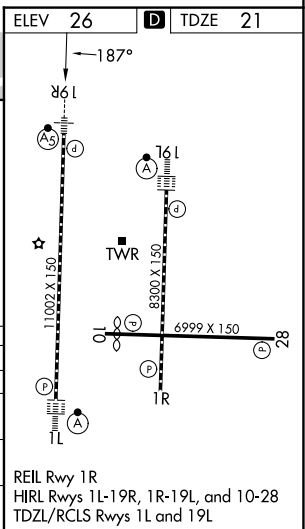
TAMPA INTL (TPA)

RNP APCH - GPS.	MALSRL	MISSED APPROACH: Climb to 800 then climbing right turn to 2000 direct JACKT and hold.
<p>▼ LNAV procedure NA during simultaneous operations. Simultaneous approach authorized.</p> <p>▲ Use of FD or AP required during simultaneous operations. For uncompensated Baro-VNAV systems, LNAV/VNAV NA below 4°C or above 54°C. For inop ALS, increase LPV visibility Cat E to RVR 4000, LNAV/VNAV visibility all Cats to RVR 6000, and LNAV visibility Cat C/D/E to RVR 6000. * RVR 1800 authorized with use of FD or AP or HUD to DA.</p>		

D-ATIS 126.45	TAMPA APP CON 118.5 307.175	TAMPA TOWER 119.5 269.4	GND CON 121.7 269.4
-------------------------	---------------------------------------	-----------------------------------	-------------------------------



VGSI and RNAV glidepath not coincident (VGSI Angle 3.00/TCH 71).	6 NM Holding Pattern				
	FADDI	MERRA			
	ZESHY 1.4 NM to RWY 19R	JMBOB 2000	187°	007°	6000 / 3000
	1.4 NM	4.6 NM	3.7 NM	4.3 NM	GP 3.00° TCH 54
CATEGORY	A	B	C	D	E
LPV DA*	221/24		200 (200-½)		
LNAV/VNAV DA	440/40		419 (500-¾)		
LNAV MDA	440/24	419 (500-½)	440/40		419 (500-¾)
CIRCLING	600-1	574 (600-1)	680-1¾ 654 (700-1¾)	980-3	954 (1000-3)



SE-3, 11 JUN 2026 to 09 JUL 2026

SE-3, 11 JUN 2026 to 09 JUL 2026