

WAAS CH 87105 W 01B	APP CRS 007°	Rwy Ldg 8300 TDZE 21 Apt Elev 26
---	------------------------	---

RNAV (GPS) Y RWY 1R

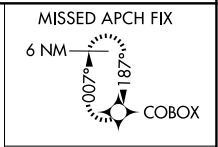
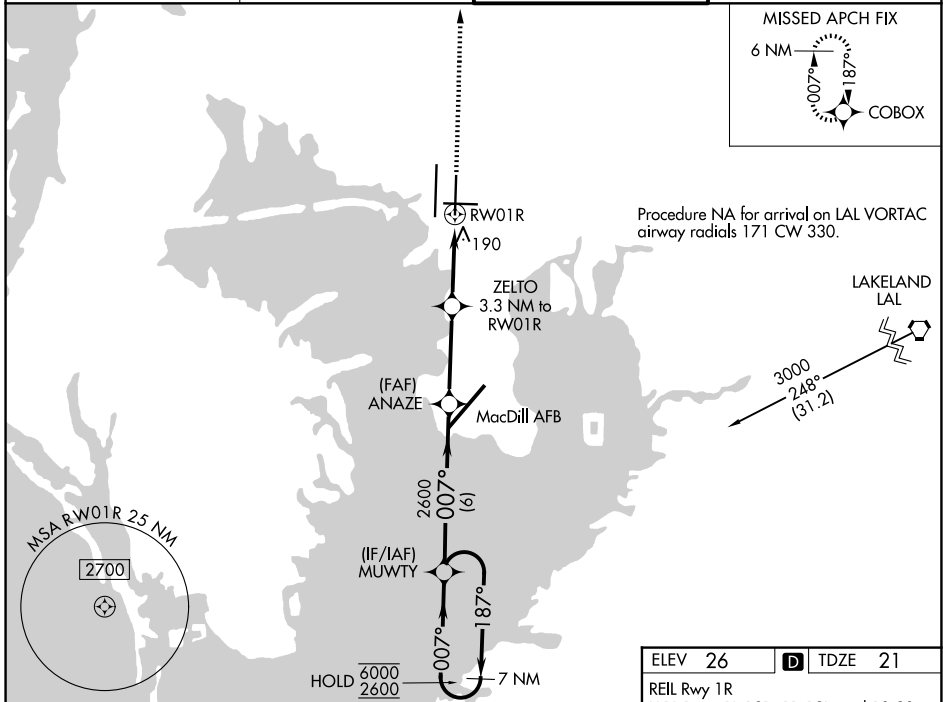
TAMPA INTL (TPA)

RNP APCH - GPS.

▼ For uncompensated Baro-VNAV systems, LNAV/VNAV NA below 4°C or above 54°C.
▲ Simultaneous approach authorized with Rwy 1L LNAV procedure NA during simultaneous operations. Use of FD or AP required during simultaneous operations.

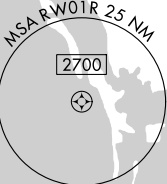
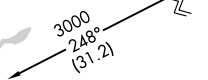
MISSED APPROACH: Climb to 2000 direct COBOX and hold.

D-ATIS 126.45	TAMPA APP CON 118.5 307.175	TAMPA TOWER 119.5 269.4	GND CON 121.7 269.4
-------------------------	---------------------------------------	-----------------------------------	-------------------------------



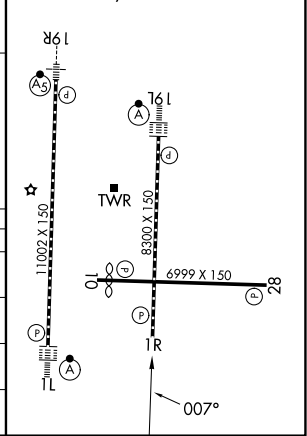
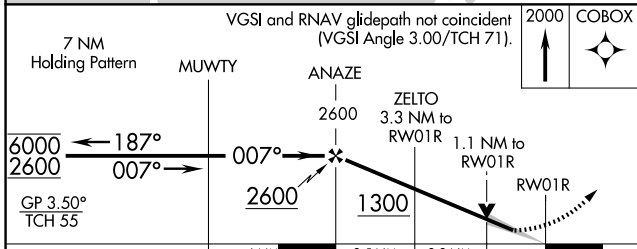
Procedure NA for arrival on LAL VORTAC airway radials 171 CW 330.

LAKELAND LAL



ELEV 26	D TDZE 21
---------	------------------

REIL Rwy 1R
 HIRL Rwsy 1L-19R, 1R-19L, and 10-28
 TDZL/RCLS Rwsy 1L and 19L



CATEGORY	A	B	C	D	E
LPV DA	291/45	270 (300- $\frac{7}{8}$)			NA
LNAV/VNAV DA	440/60	419 (500- $1\frac{1}{4}$)			NA
LNAV MDA	440/55	419 (500-1)	440/60	419 (500- $1\frac{1}{4}$)	
CIRCLING	600-1	574 (600-1)	680- $1\frac{3}{4}$ 654 (700- $1\frac{3}{4}$)	980-3	954 (1000-3)

SE-3, 11 JUN 2026 to 09 JUL 2026

SE-3, 11 JUN 2026 to 09 JUL 2026