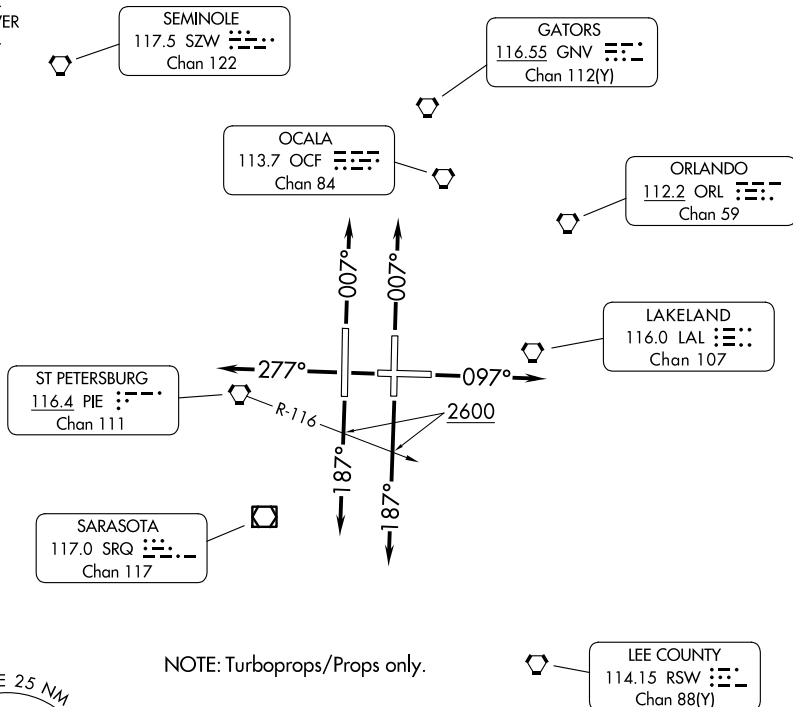


# TAMPA NINE DEPARTURE

TAMPA DEP CON  
134.25 279.6  
D-ATIS DEP  
128.475  
CLNC DEL  
133.6  
GND CON  
121.7 269.4  
TAMPA TOWER  
119.5 269.4

RADAR required.

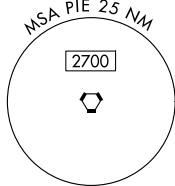
**TOP ALTITUDE:  
3000**



NOTE: Turboprops/Props only.

### TAKEOFF MINIMUMS

Rwys 1L/R, 19R, 28: Standard.  
 Rwy 10: Standard with minimum climb of 245'/NM to 900.  
 Rwy 19L: 300-1½ or standard with minimum climb of 225'/NM to 300,  
 or alternatively, with standard takeoff minimums and a normal  
 200'/NM climb gradient, takeoff must occur no later than 1600'  
 prior to departure end of runway.



NOTE: Chart not to scale.

### DEPARTURE ROUTE DESCRIPTION

TAKEOFF RUNWAYS 1L/R: Climb on heading 007°, thence. . .  
TAKEOFF RUNWAY 10: Climb on heading 097°, thence. . .  
TAKEOFF RUNWAYS 19L/R: Climb on heading 187° to cross PIE R-116 at or  
 above 2600, thence. . .  
TAKEOFF RUNWAY 28: Climb on heading 277°, thence. . .  
 . . . expect RADAR vectors to join filed/assigned route. Maintain 3000, expect filed  
 altitude 10 minutes after departure.