

TAMPA, FLORIDA

ILS or LOC RWY 5

| | | |
|---------------------------|-------------------------|---|
| LOC I-MCF 109.5 | APCH CRS 044° | Rwy Idg 11,421 TDZE 10 Arprt Elev 14 |
|---------------------------|-------------------------|---|

AL-418 [USAF]

MACDILL AFB (KMCF)

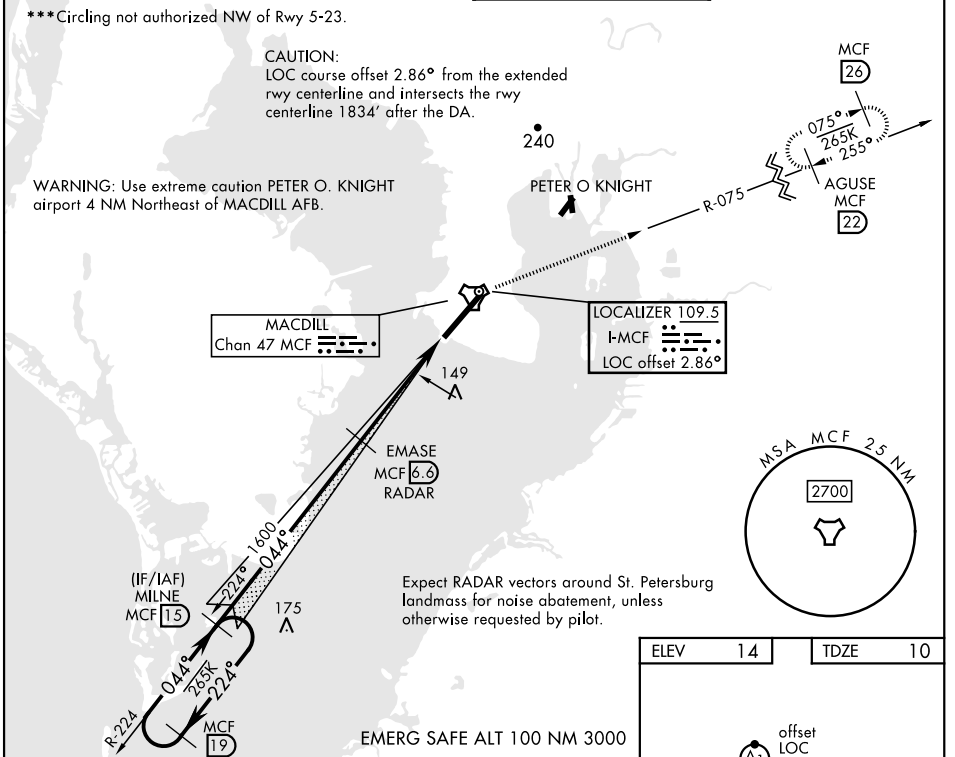
| | | | |
|---|--|------------|---|
| RADAR or DME required. | | ALSF-1 | MISSED APPROACH: Climb to 2700 via MCF TACAN R-075 to MCF 22 DME and hold. Cross 8 DME at 1700. RNAV or ATC RADAR required for missed approach. |
| *When ALS inop, increase RVR to 40, vis to 3/4 mile. **When ALS inop, increase CAT AB RVR to 55, vis to 1 mile; CAT CDE RVR to 60, vis to 1 1/2 miles. | | | |

| | | | |
|------------------------------|--------------------------------------|-------------------------------|---------------------------------|
| ATIS 133.825 270.1 | TAMPA APP CON 124.95 354.0 | TOWER 120.175 294.7 | GND CON 118.575 275.8 |
|------------------------------|--------------------------------------|-------------------------------|---------------------------------|

***Circling not authorized NW of Rwy 5-23.

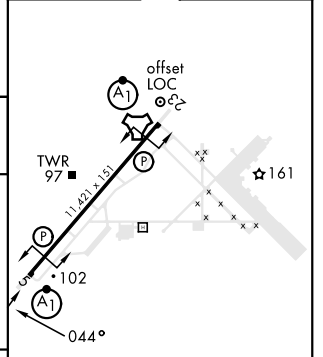
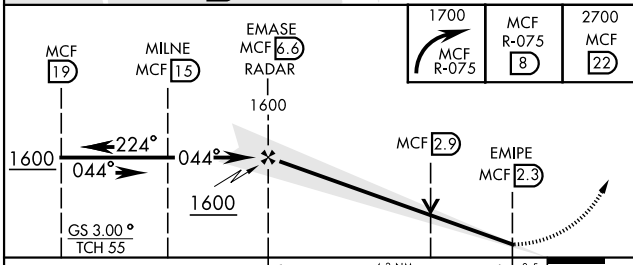
CAUTION:
LOC course offset 2.86° from the extended rwy centerline and intersects the rwy centerline 1834' after the DA.

WARNING: Use extreme caution PETER O. KNIGHT airport 4 NM Northeast of MACDILL AFB.



Expect RADAR vectors around St. Petersburg landmark for noise abatement, unless otherwise requested by pilot.

| | | | |
|------|----|------|----|
| ELEV | 14 | TDZE | 10 |
|------|----|------|----|



| | | | | | |
|----------------------------|------------------|---------------|---------------|---------------|---------------|
| EMERG SAFE ALT 100 NM 3000 | | | | | |
| CATEGORY | A | B | C | D | E |
| S-ILS 5 * | 260/24 (300-1/2) | | | | |
| S-LOC 5 ** | 420/24 | 410 (500-1/2) | 420/40 | 410 (500-3/4) | |
| *** CIRCLING | 500-1 | 540-1 | 540-1 1/2 | 580-2 | 1020-3 |
| | 486 (500-1) | 526 (600-1) | 526 (600-1/2) | 566 (600-2) | 1006 (1100-3) |
| HIRL Rwy 5-23 | | | | | |
| FAF to MAP 4.3 NM | | | | | |
| Knots | 60 | 90 | 120 | 150 | 180 |
| Min:Sec | 4:18 | 2:52 | 2:09 | 1:43 | 1:26 |

TAMPA, FLORIDA
Amdt 1 18MAY23

27°51'N-82°31'W

MACDILL AFB (KMCF)

ILS or LOC RWY 5

SE-3, 11 JUN 2026 to 09 JUL 2026

SE-3, 11 JUN 2026 to 09 JUL 2026