

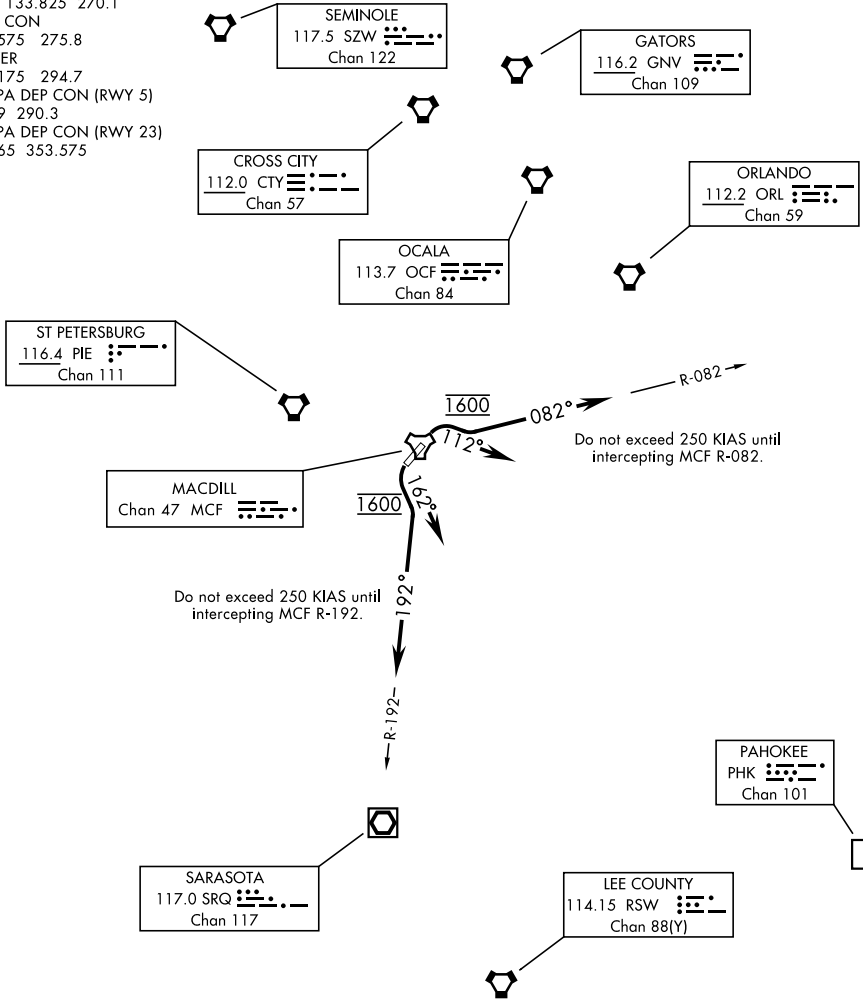
# MACDILL ONE DEPARTURE (MCF1.MCF)

[USAF]

MACDILL AFB (KMCF)

TAMPA, FLORIDA

ATIS 133.825 270.1  
 GND CON  
 118.575 275.8  
 TOWER  
 120.175 294.7  
 TAMPA DEP CON (RWY 5)  
 119.9 290.3  
 TAMPA DEP CON (RWY 23)  
 119.65 353.575



SE-3, 11 JUN 2026 to 09 JUL 2026

SE-3, 11 JUN 2026 to 09 JUL 2026

NOTE: Chart not to scale

NA for CAT E aircraft

## DEPARTURE ROUTE DESCRIPTION

**TAKEOFF RWY 5:** Climbing right turn heading 112°, maintain 1600, intercept MCF R-082 outbound, expect RADAR vectors. Expect clearance to filed altitude within 10 min after departure.

**TAKEOFF RWY 23:** Climbing left turn heading 162°, maintain 1600, intercept MCF R-192 outbound, expect RADAR vectors. Expect clearance to filed altitude within 10 min after departure.

# MACDILL ONE DEPARTURE (MCF1.MCF)

Amdt 1 31DEC20

TAMPA, FLORIDA  
MACDILL AFB (KMCF)